



11A Monaghan Street
, Newry, BT35 6BB

£13,500 Per Annum

Located in the centre of Newry's Creamery Quarter on the busy Monaghan Street, this Retail Unit is c.408sqft in size, offering a unique opportunity for a wide range of commercial uses. The surrounding area, includes a range of occupiers and use types, including; the Southern Regional College, Newry Health Village and Newry Sports Centre driving significant Footfall, as well as numerous national and local retailers including; Subway, TK Maxx, Dunnes Stores, Argos, Peacocks, B&M Bargains, Delilites, McEvoy's Clothing and Grounded Espresso Bars.

The Unit itself is suitable for a wide range of uses and benefits from newly completed internal renovations with laminate flooring, white ceiling tiles and LED panel lighting.

11A Monaghan Street

, Newry, BT35 6BB



ADDITIONAL INFORMATION

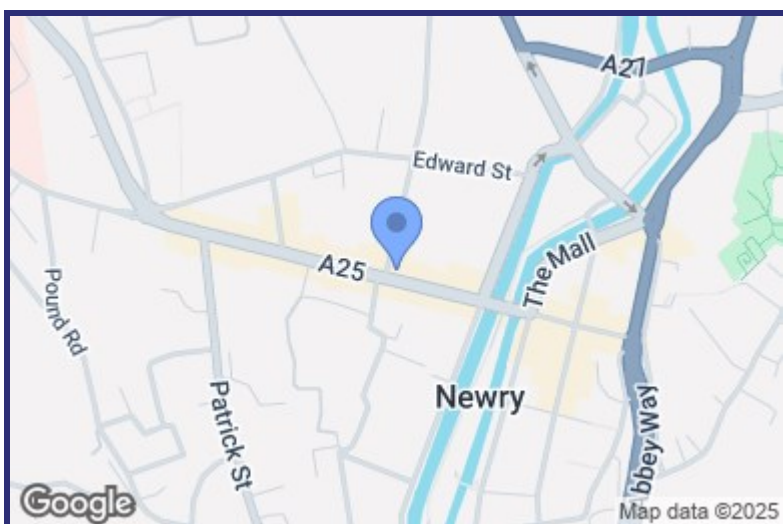
DESCRIPTION

SPECIFICATION

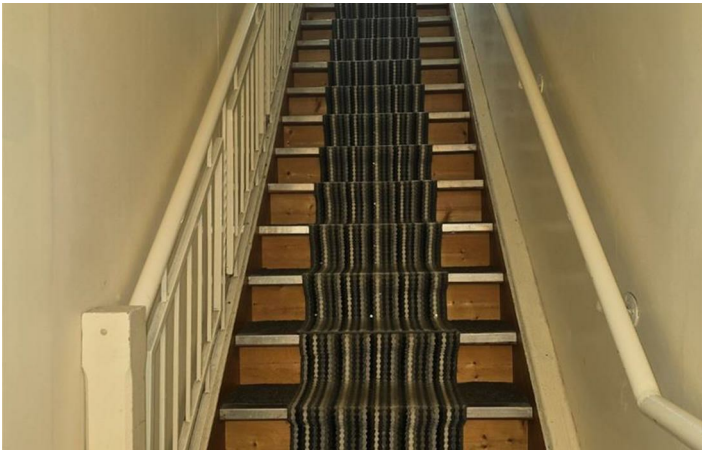
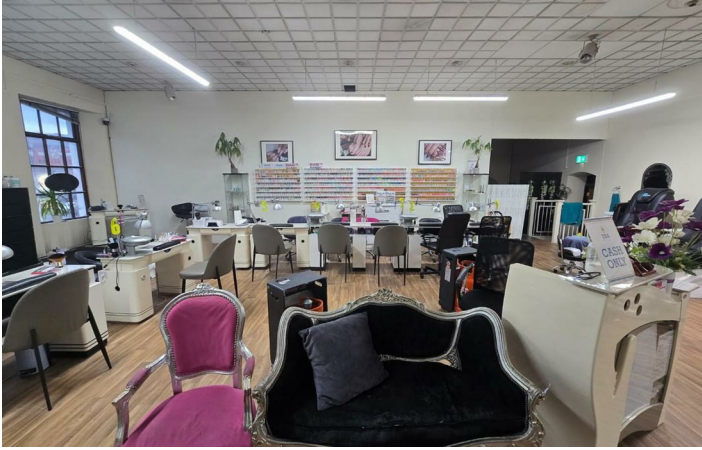
TERMS

RATEABLE VALUE

VIEWINGS/ DETAILS



Energy Efficiency Rating		
	Current	Potential
<i>Very energy efficient - lower running costs</i>		
(92 plus) A		
(81-91) B		
(69-80) C		
(55-68) D		
(39-54) E		
(21-38) F		
(1-20) G		
<i>Not energy efficient - higher running costs</i>		
Northern Ireland	EU Directive 2002/91/EC	



We look forward to working with you...



We get there together

Our experienced and trusted team have assisted 1000's of people with buying, selling and letting.



We're here for you

Client care is at the very heart of what we do. We will guide and support you every step of the way.



Always close by

With multiple offices and a leading marketing team, we will make sure that you get the very best result.

Newry:

30 Monaghan Street, Newry, Co.Down, BT35 6AA
T: 028 300 50633 E: newry@bradleyni.com

Warrenpoint:

25 Duke Street, Warrenpoint, Co.Down, BT34 3JY
T: 028 417 73777 E: warrenpoint@bradleyni.com

Rostrevor:

14 Bridge Street, Rostrevor, Co.Down, BT34 3BG
T: 028 417 39999 E: rostrevor@bradleyni.com

Belfast:

55-59 Adelaide Street, Belfast, Co.Antrim, BT2 8FE
T: 028 962 09909 E: belfast@bradleyni.com

These particulars, whilst believed to be accurate are set out as a general outline only for guidance and do not constitute any part of an offer or contract. Intending purchasers should not rely on them as statements of representation of fact, but must satisfy themselves by inspection or otherwise as to their accuracy. No person in this firms employment has the authority to make or give any representation or warranty in respect of the property.