

250C WHITEWELL ROAD

Newtownabbey BT36

7NH

- First Floor Apartment
- 2 Bedrooms
- Large Lounge & Balcony
- Fitted Kitchen
- White Bathroom Suite
- PVC Double Glazing
- Gas Heating
- Communal Parking

Energy Efficiency Rating		Current	Potential
Very energy efficient - lower running costs			
(92 plus)	A		
(81-91)	B		
(69-80)	C		
(55-68)	D		
(39-54)	E		
(21-38)	F		
(1-20)	G		
Not energy efficient - higher running costs			
Northern Ireland			EU Directive 2002/91/EC

Price £109,950

250C Whitewell Road , Newtownabbey, BT36 7NH



ACCOMMODATION COMPRISES

FIRST FLOOR

ENTRANCE PORCH

ENTRANCE HALL

Radiator, storage cupboard,
plumbed for washing machine

LOUNGE

18'10" x 11'3" (5.74m" x 3.43m')
Two radiators, pvc double
glazed door to balcony, open to
kitchen

BALCONY

Steel ballustrades, views
towards countryside

KITCHEN

12'8" x 8'4" at widest (3.86m" x
2.54m" at widest)
Range of low level units,
formica worktops, stainless
steel single drainer sink unit,
built in stainless steel under
oven, stainless steel gas hob,
stainless steel extractor fan,
fridge / freezer space

BEDROOM 1

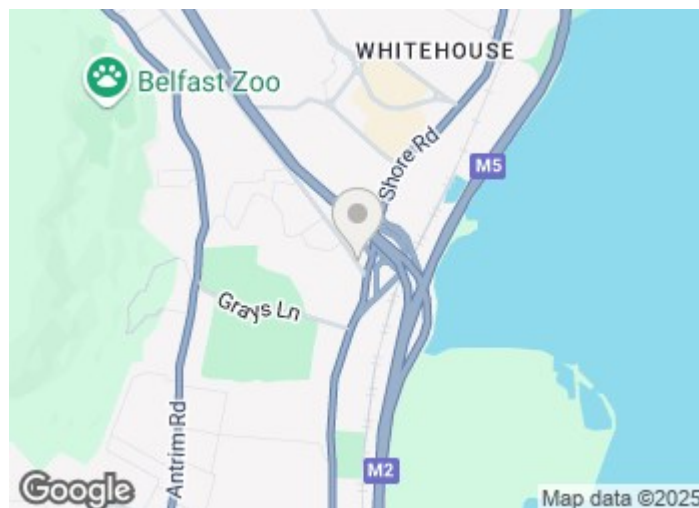
14'1" x 13'1" at widest (4.29m" x
3.99m" at widest)
Radiator

BEDROOM 2

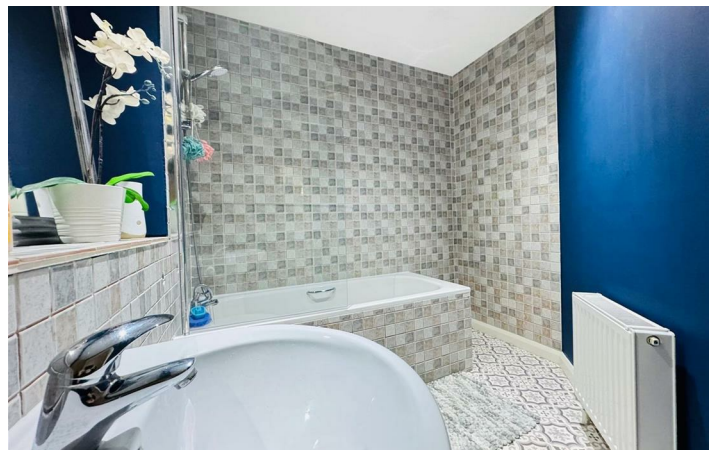
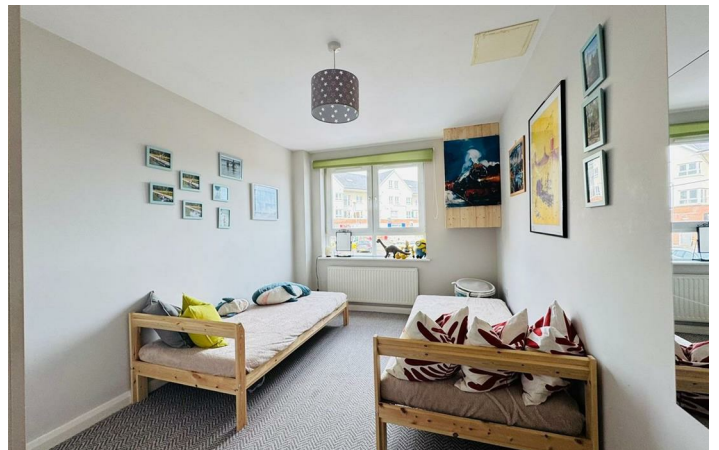
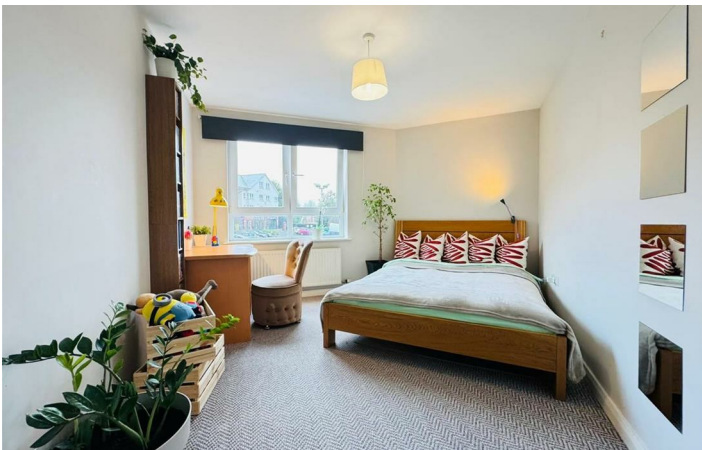
14'0" x 9'1" (4.27m" x 2.77m")
Radiator

BATHROOM

White suite comprising bath,
shower attachment, screen,
pedestal wash hand basin,
enclosed cistern wc, partly tiled
walls, radiator



Directions



Floor Plan

These particulars, whilst believed to be accurate are set out as a general outline only for guidance and do not constitute any part of an offer or contract. Intending purchasers should not rely on them as statements of representation of fact, but must satisfy themselves by inspection or otherwise as to their accuracy. No person in this firm's employment has the authority to make or give any representation or warranty in respect of the property.



ULSTERPROPERTYSALES.CO.UK

ANDERSONSTOWN
028 9060 5200

BANGOR
028 9127 1185

DONAGHADEE
028 9188 8000

GLENGORMLEY
028 9083 3295

RENTAL DIVISION
028 9070 1000

BALLYHACKAMORE
028 9047 1515

CARRICKFERGUS
028 9336 6986

DOWNPATRICK
028 4461 4101

MALONE
028 9066 1929

BALLYNAHINCH
028 9756 1155

CAVEHILL
028 9072 9270

FORESTSIDE
028 9064 1264

NEWTOWNARDS
028 9181 1444



Keith Larmour trading under licence as Ulster Property Sales (Glengormley)
©Ulster Property Sales is a Registered Trademark