



Bond
Oxborough
Phillips

Changing Lifestyles

38 Crelake Park

Tavistock

PL19 9AY



Offers In Excess of - £240,000



Changing Lifestyles

01822 600700

38 Crelake Park, Tavistock, PL19 9AY



- End of Terraced Home
- Generous Corner Plot
- Offering Three Bedrooms
- Modern Kitchen/ Dining Room
- Useful Utility Area & Downstairs WC
- Detached Garage and Parking
- Sought After Location
- New Roof in 2022



This beautifully presented end-of-terrace family home is nestled on a larger-than-usual corner plot on the outskirts of Tavistock, offering both privacy and a peaceful location. The property has been thoughtfully upgraded and enhanced by the current owners, providing spacious and versatile living accommodation, ideal for modern family living.

Set across two levels, the home is perfectly situated with gardens to the front, side, and rear, providing an abundance of outdoor space.

The accommodation is well-presented and thoughtfully laid out, beginning with an inviting entrance hall that leads into a bright and spacious dining room, which seamlessly flows into the modern kitchen, creating an open-plan feel perfect for both everyday living and entertaining. The ground floor also features a conveniently located cloakroom and utility area for added practicality.



Moving upstairs, the first-floor landing provides access to three generously sized bedrooms, each offering ample space and natural light. The family bathroom is also situated on this level, offering a comfortable and functional space for the household. Overall, this home combines practicality with comfort, making it an ideal setting for modern family living.

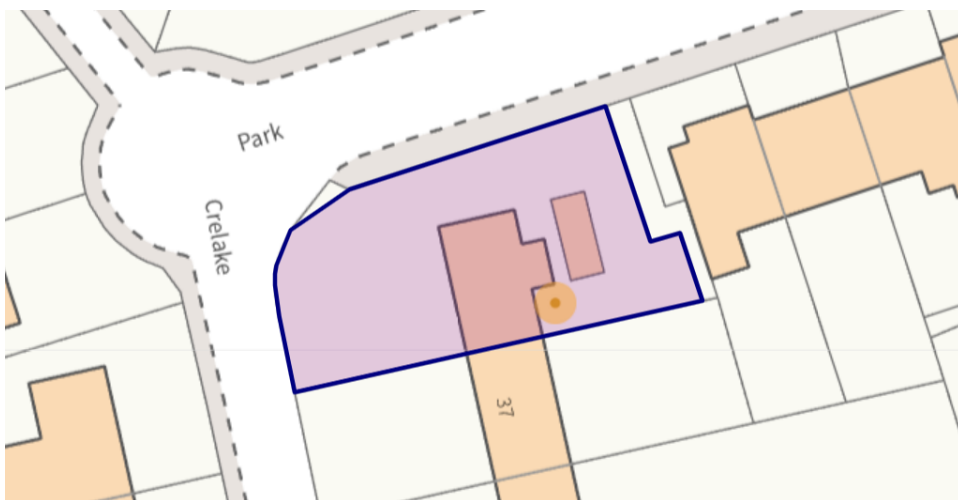
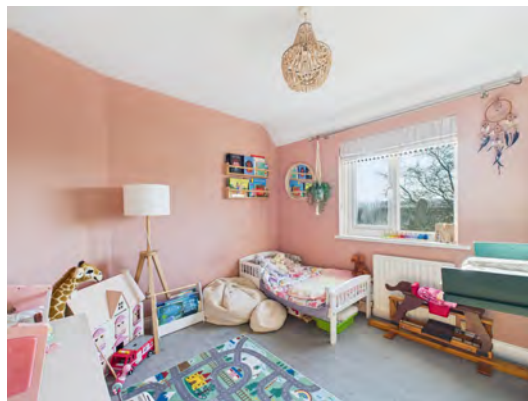
The generous corner plots complete with well-maintained lawns, mature shrubs, and plenty of room for outdoor entertaining. Additionally, the property benefits from off-road parking for multiple vehicles and a detached garage, offering convenient and secure parking or additional storage space.

Changing Lifestyles

Tavistock is a thriving stannary market town in West Devon, nestled on the western edge of Dartmoor National Park. Tavistock is an ancient town, rich in history dating back to the 10th century and famed for being the birthplace of Sir Francis Drake. Largely the 19th-century town centre is focused around Bedford Square which is a short stroll from this property.

The town offers a superb range of shopping, boasting the famous Pannier Market and a wide range of local and national shops. Also there are public houses, cafes, restaurants, social clubs, riverside park, leisure centre, theatre, doctors' surgery, dentists and Tavistock Hospital. There are excellent educational facilities including primary and secondary schools in the state and private sector. The town has superb recreation and sporting facilities including; Tennis club, bowls club, golf club, cricket clubs, football club and athletics track.

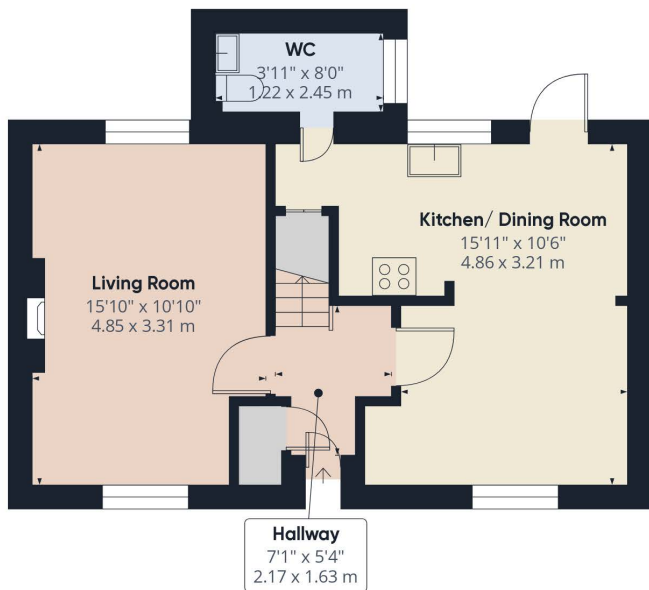
Plymouth, some 15 miles to the south, offers extensive amenities. The cathedral city of Exeter lies some 40 miles to the northeast, providing transport connections to London and the rest of the UK via its railway links and the M5 motorway.



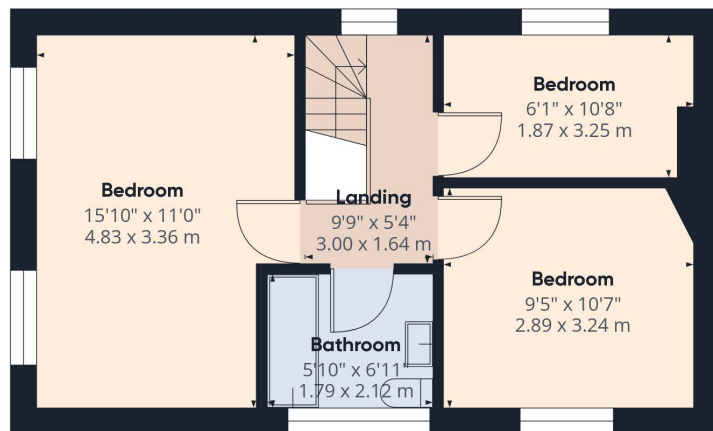
Please do not hesitate to contact the team at Bond Oxborough Phillips Sales & Lettings on **01822 600700** for more information or to arrange an accompanied viewing on this property.

Scan here for our Virtual Tour:





Floor 0 Building 1



Floor 1 Building 1



Floor 0 Building 2

Have a property to sell or let?

If you are considering selling or letting your home, get in contact with us today on 01822 600700 to speak with one of our expert team who will be able to provide you with a free valuation of your home.

We have the facility to refer purchasers and vendors to conveyancing, mortgage advisors and Surveyors. It is your decision if you choose to deal with any of these companies however should you choose to use them we would receive a referral fee from them for recommending you. We will receive a referral fee between £50 - £300 depending on the company & individual circumstances. We have carefully selected these associates for the quality of their work and customer service levels.

Consumer Protection Regulations: We have not tested any apparatus, equipment, fixtures and fittings or services and so cannot verify that they are in working order or fit for the purpose. References to the Tenure of a Property are based on information supplied by the seller. We have not had sight of the Title Documents. A buyer is advised to obtain verification from their solicitor or surveyor. Floorplans shown are for guidance only and should not be relied upon. Items shown in photographs are NOT included unless specifically mentioned within these details. They may however be able by separate negotiation. You are advised to check the availability of this property before travelling any distance to view. Particulars are produced in good faith to the best of our knowledge and are set out as a general guide only.