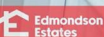




78 Sand Road

Galgorm, BT42 1DL

Offers Around £149,950



78 Sand Road

, Galgorm, BT42 1DL

Offers Around £149,950



ACCOMMDATION

GROUND FLOOR

ENTRANCE HALL

PVC double glazed front door. Stairwell to first floor. Wood laminate floor covering.

LOUNGE

11'9 x 11'5 (3.58m x 3.48m)

widest points. Focal point open fire (with back boiler link up system) with timber surround on granite hearth. Access to under stair store. Wood laminate floor covering.

FITTED KITCHEN

15'0 x 7'8 (4.57m x 2.34m)

Modern fitted shaker kitchen with high and low level storage units and contrasting work surfaces. Integrated 4 ring electric hob and oven with extractor fan over. Space for washing machine and fridge freezer. Stainless steel sink unit. Breakfast bar area. PVC double glazed rear door.

FIRST FLOOR

LANDING

Access to roof space.

BEDROOM 1

13'0 x 9'9 (3.96m x 2.97m)

widest points. Access to built in wardrobe.

BEDROOM 2

9'9 x 8'3 (2.97m x 2.51m)

widest points. Access to hotpress.

FAMILY BATHROOM

Fitted three piece suite comprising panelled bath with electric shower over, wash hand basin and WC. Fully panelled walls to bath.

EXTERNAL

Private driveway in tarmac.

Extensive rear garden in lawn with patio area and array of mature trees and shrubs.

Access to outside store with power and light.

Access to boiler house with oil fired central heating boiler.

Detached shed/barn with twin entrance doors (25'10 x 18'4)



Road Map



Hybrid Map

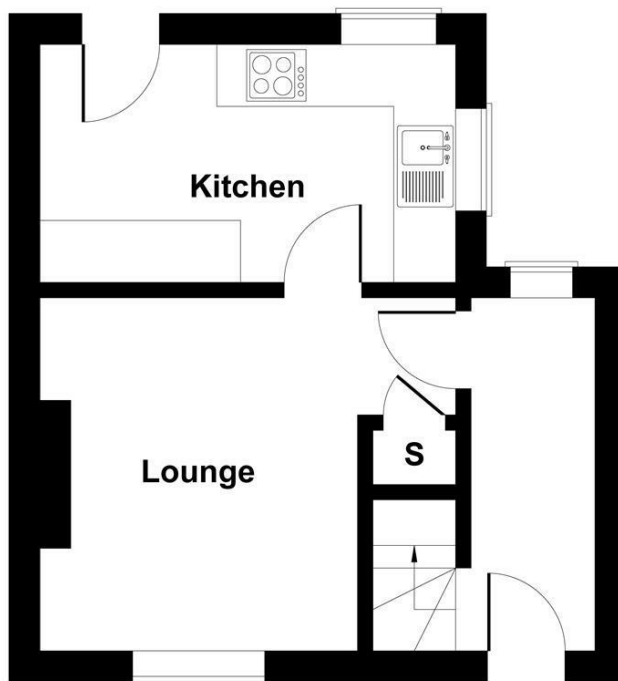


Terrain Map

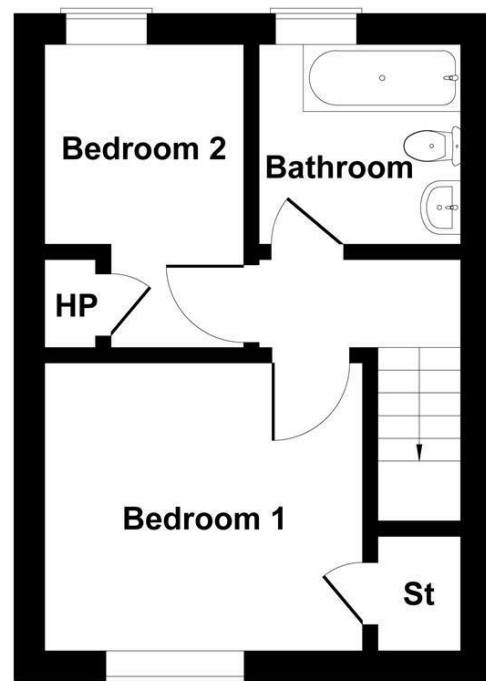


Floor Plan

78 Sand Road



GROUND FLOOR



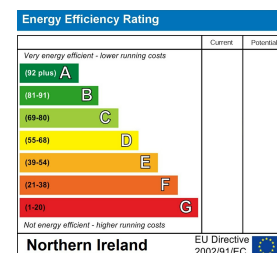
FIRST FLOOR

Not to Scale. Produced by The Plan Portal 2025
For Illustrative Purposes Only.

Viewing

Please contact our Ballymena Office on 02825655733 if you wish to arrange a viewing appointment for this property or require further information.

Energy Efficiency Graph



These particulars, whilst believed to be accurate are set out as a general outline only for guidance and do not constitute any part of an offer or contract. Intending purchasers should not rely on them as statements of representation of fact, but must satisfy themselves by inspection or otherwise as to their accuracy. No person in this firm's employment has the authority to make or give any representation or warranty in respect of the property. Edmondson Estates have not tested any services, equipment, or facilities within the premises and will not be liable, in negligence or otherwise, for any loss arising from the use of these particulars.