



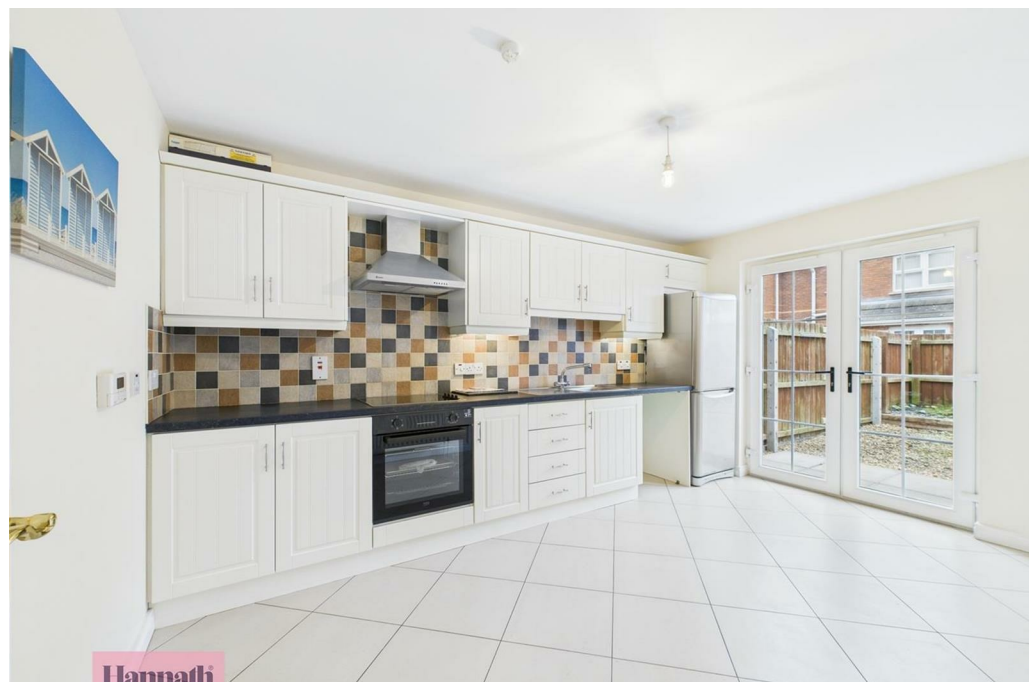
## 38 Mahon Court, Portadown, Craigavon, County Armagh, BT62 ZCF Offers Over £135,000

- Spacious Three Bedroom Family Townhouse
- Suitable for Co-ownership
- Modern Kitchen with an Array of Sleek Fitted Units & Integrated Appliances
- Brand New Integrated Cooker
- WC
- Three Well Proportioned Bedrooms
- Newly Fitted Interconnected Smoke Alarms
- Large Lounge Flooded with Plenty of Natural Light
- Utility
- Four Piece Partially Tiled Family Bathroom Suite

Energy Efficiency Rating		
	Current	Potential
Very energy efficient - lower running costs		
(92 plus) <b>A</b>		
(81-91) <b>B</b>		
(69-80) <b>C</b>		
(55-68) <b>D</b>		
(39-54) <b>E</b>		
(21-38) <b>F</b>		
(1-20) <b>G</b>		
Not energy efficient - higher running costs		
Northern Ireland EU Directive 2002/91/EC		

# 38 Mahon Court, Craigavon BT62 3GE

Hannath Estate Agents are delighted to welcome this spacious three bedroom family townhouse located in Mahon Court, Portadown. There is a spacious lounge that is flooded with natural light. The modern kitchen area boasts sleek fitted units and integrated appliances. Convenience is further enhanced by a utility room & WC. Moving upstairs, you'll find three well-proportioned bedrooms & a four-piece partially tiled family bathroom suite.



### Hallway

17'4" x 5'10"

### Lounge

15'9" x 9'7"

### Kitchen/Dining

14'0" x 9'7"

### Utility

4'9" x 5'9"

### WC

2'10" x 5'9"

### Landing

11'2" x 6'0"

### Master Bedroom

16'1" x 9'3"

### Bedroom 2

11'6" x 9'3"

### Bedroom 3

15'10" x 3'9"

### Bathroom

6'0" x 10'3"

