



Bond
Oxborough
Phillips

Changing Lifestyles

3 Yellowmead Tor Close,
Tavistock,
Devon,
PL19 8GB



Asking Price - £465,000



Changing Lifestyles

01822 600700

3 Yellowmead Tor Close, Tavistock, Devon, PL19 8GB

A fantastic four bedroom detached home, offering spacious accommodation, parking and a car port...



- Fantastic Detached Home
- Offering Four Bedrooms
- Large Kitchen/ Dining Room
- Living Room & Separate Study
- Downstairs Cloakroom
- En Suite Shower Room & Family Bathroom
- Car Port & Off Road Parking
- Private South Facing Garden



Nestled in the sought-after development of 'The Tors' in Tavistock, this remarkable and spacious family home offers an immaculate living experience. It enjoys a prime position overlooking a verdant green space, providing a serene and open outlook.

Upon entering, you are greeted by an inviting hallway that ushers you into a bright and expansive kitchen/dining room. This area boasts built-in appliances and features triple doors that open onto a private rear garden. The ground floor also includes a cozy living room, a separate study—perfect for remote work or as a potential fifth bedroom and a convenient cloakroom.



Ascending to the first floor, you'll find four generously-sized double bedrooms. The master suite is enhanced with built-in wardrobes and an en-suite shower room, while a well-appointed family bathroom serves the other bedrooms.

Externally, the property offers practical amenities such as a carport and off-road parking for two to three vehicles. A meticulously maintained lawn and pathway guide you to the front door. The rear garden is accessible from either side of the house or through the kitchen/dining room's triple doors.

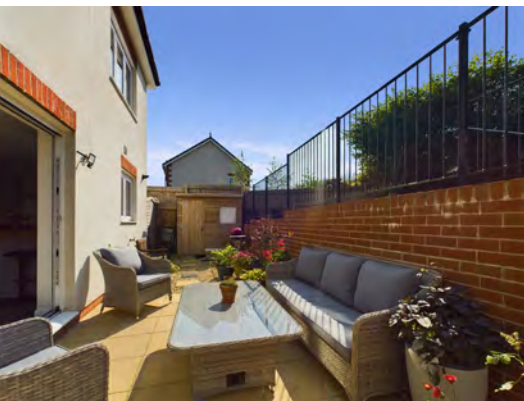
It is thoughtfully arranged over two levels, featuring a patio area ideal for outdoor dining and two wooden sheds. Steps ascend to a raised lawn, bordered by vibrant flowers and shrubs, and a traditional Devon hedge at the back, ensuring tranquility and privacy.

Changing Lifestyles

Tavistock is a thriving stannary market town in West Devon, nestled on the western edge of Dartmoor National Park. Tavistock is an ancient town, rich in history dating back to the 10th century and famed for being the birthplace of Sir Francis Drake. Largely the 19th-century town centre is focused around Bedford Square which is a short stroll from this property.

The town offers a superb range of shopping, boasting the famous Pannier Market and a wide range of local and national shops. Also there are public houses, cafes, restaurants, social clubs, riverside park, leisure centre, theatre, doctors surgery, dentists and Tavistock Hospital. There are excellent educational facilities including primary and secondary schools in the state and private sector. The town has superb recreation and sporting facilities including; Tennis club, bowls club, golf club, cricket clubs, football club and athletics track.

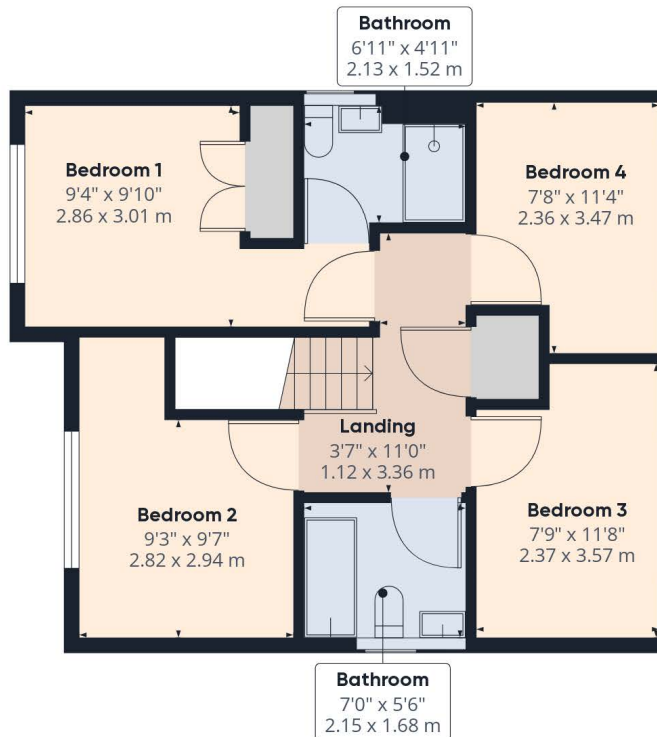
Plymouth, some 15 miles to the south, offers extensive amenities. The cathedral city of Exeter lies some 40 miles to the northeast, providing transport connections to London and the rest of the UK via its railway links and the M5 motorway.



Please do not hesitate to contact
the team at
Bond Oxborough Phillips
Sales & Lettings on
01822 600700
for more information or to
arrange an accompanied viewing
on this property.

Scan here for
our Virtual Tour:





Have a property to sell or let?

If you are considering selling or letting your home, get in contact with us today on 01822 600700 to speak with one of our expert team who will be able to provide you with a free valuation of your home.

We have the facility to refer purchasers and vendors to conveyancing, mortgage advisors and Surveyors. It is your decision if you choose to deal with any of these companies however should you choose to use them we would receive a referral fee from them for recommending you. We will receive a referral fee between £50 - £300 depending on the company & individual circumstances. We have carefully selected these associates for the quality of their work and customer service levels.

Consumer Protection Regulations: We have not tested any apparatus, equipment, fixtures and fittings or services and so cannot verify that they are in working order or fit for the purpose. References to the Tenure of a Property are based on information supplied by the seller. We have not had sight of the Title Documents. A buyer is advised to obtain verification from their solicitor or surveyor. Floorplans shown are for guidance only and should not be relied upon. Items shown in photographs are NOT included unless specifically mentioned within these details. They may however be able by separate negotiation. You are advised to check the availability of this property before travelling any distance to view. Particulars are produced in good faith to the best of our knowledge and are set out as a general guide only.