

Tim Martin
co.uk



68-70 Castle Street
Comber
BT23 5DZ

Offers Around
£120,000

www.timmartin.co.uk
Telephone 028 91 878956

SUMMARY

Situated in a prominent position on the main arterial route from Belfast into Comber.

The spacious property, suitable for a wide range of uses (subject to planning) comprises of a shop/showroom, rear showroom, kitchen and WC facilities. It can be subdivided if desired with entrance doors to 68 and 70. Affords an opportunity with a desire for owner occupier or an investment opportunity with the potential for a good rental return.

The premises are convenient to a good range of rental outlets including Lawson Dental, Hardy's Hardware, Post office, Supervalu and a selection of professional businesses.

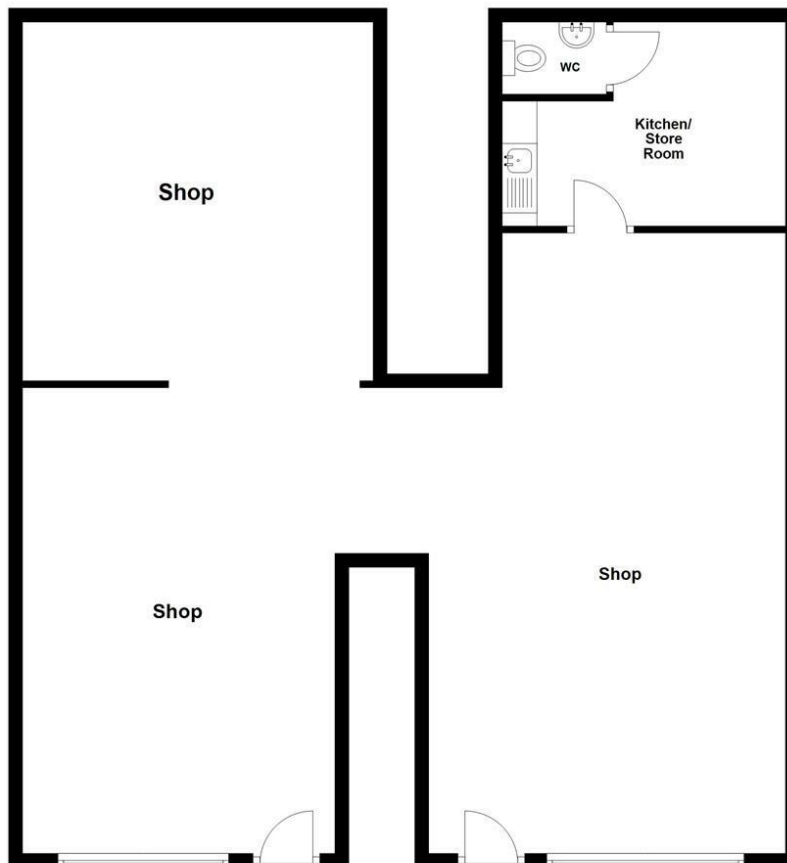
The property is easily accessible from the surrounding towns of Lisbane, Killinchy, Ballygowan and Newtownards as well a Belfast City Centre via an excellent road network and public transport links.

FEATURES

- Prominent Retail Unit Situated In The Heart Of Comber Village
- Comprising Of A Spacious Shop/Showroom, Kitchen And WC Facilities
- Suitable For A Wide Range Of Uses (Subject To Planning)
- Close To Comber Town Square
- Situated Close To Many New and Established Retailers And Residential Developments
- Easily Accessible From Ballygowan, Lisbane, Killinchy, Newtownards And Belfast City Centre

Ground Floor

Approx. 113.6 sq. metres (1223.3 sq. feet)



Total area: approx. 113.6 sq. metres (1223.3 sq. feet)

Photos and Plans by houseflyni.co.uk
Plan produced using PlanUp.

68 - 70 Castle Street, Comber

Accommodation

No. 68 Shop

315 Sqft

Wood laminate floor; LED spotlighting; roller shutter.

Rear Showroom

248 Sqft

Wood laminate floor; LED spotlighting.

No. 70 Shop

469 Sqft

Wood laminate floor; LED spotlighting; fire exit door; built-in I-shaped counter; emergency lighting.

Kitchen / WC

120 Sqft

Single drainer stainless steel sink unit; cupboards under formica worktops; wood laminate floor; LED spotlights. Separate white close coupled wc; pedestal wash hand basin; non slip floor.

Total Area

1152 Sqft

Capital Rateable Value

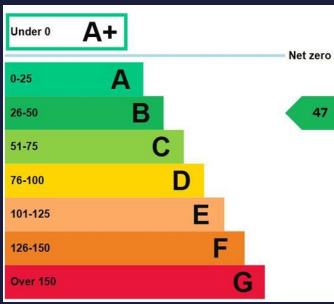
Ground Rent

To be confirmed.

Viewing

By appointment with the agent.





Comber ■
 27 Castle Street, Comber, BT23 5DY
 T 028 91 8789596

Saintfield
 1B Main Street, Saintfield, BT24 7AA
 T 028 97 568300

Tim Martin & Company for themselves and for the vendors of this property have endeavoured to prepare these sales details as accurate and reliable as possible for the guidance of intending purchasers or lessees. These particulars are given for general guidance only and do not constitute any part of an offer or contract. The seller and us as agents, do not make any representation or give any warranty in relation to the property. We would recommend that all information contained in this brochure about the property be verified by yourself or professional advisors. Services, fittings and equipment referred to in the sales details have not been tested (unless otherwise stated) and no warranty will be given as to their condition. All measurements contained within this brochure are approximate. Please contact us prior to viewing the property. If there is any point of particular importance to you we would be pleased to provide additional information or make further enquiries. We will also confirm that the property remains available. This is particularly important if you are contemplating travelling some distance to view the property.