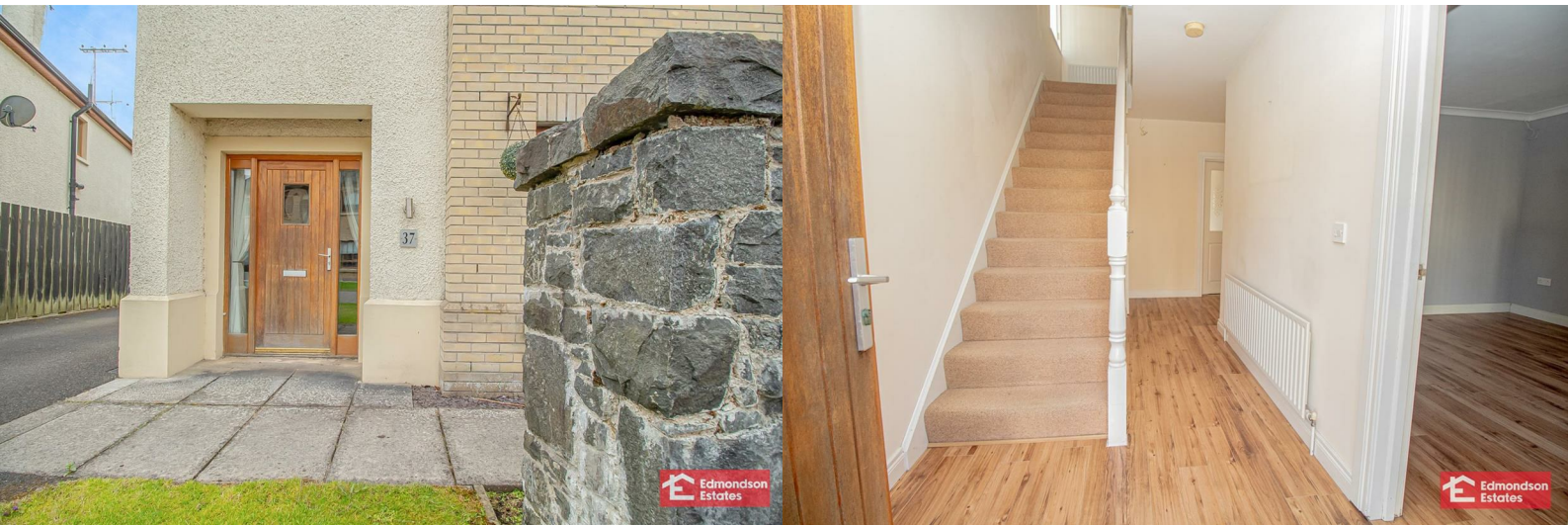




## 37 Millfields

Kells, Ballymena, BT42 3HF

£850 Per Month





# 37 Millfields

Kells, Ballymena, BT42 3HF

£850 Per Month



## ACCOMMODATION

### GROUND FLOOR

#### ENTRANCE HALL

#### LOUNGE

15'7 x 12'8 (4.75m x 3.86m )

#### FURNISHED CLOAKROOM

#### OPEN PLAN KITCHEN/LIVING/DINING AREA

13'0 x 13'0 (3.96m x 3.96m)

#### UTILITY ROOM

6'4 x 5'11 (1.93m x 1.80m)

### FIRST FLOOR

#### LANDING

#### PRINCIPAL BEDROOM

12'4 x 12'1 (3.76m x 3.68m)

#### EN-SUITE

#### BEDROOM 2

13'0 x 12'1 (3.96m x 3.68m)

#### BEDROOM 3

9'9 x 9'9 (2.97m x 2.97m)

#### FAMILY BATHROOM

#### EXTERNAL



## Road Map



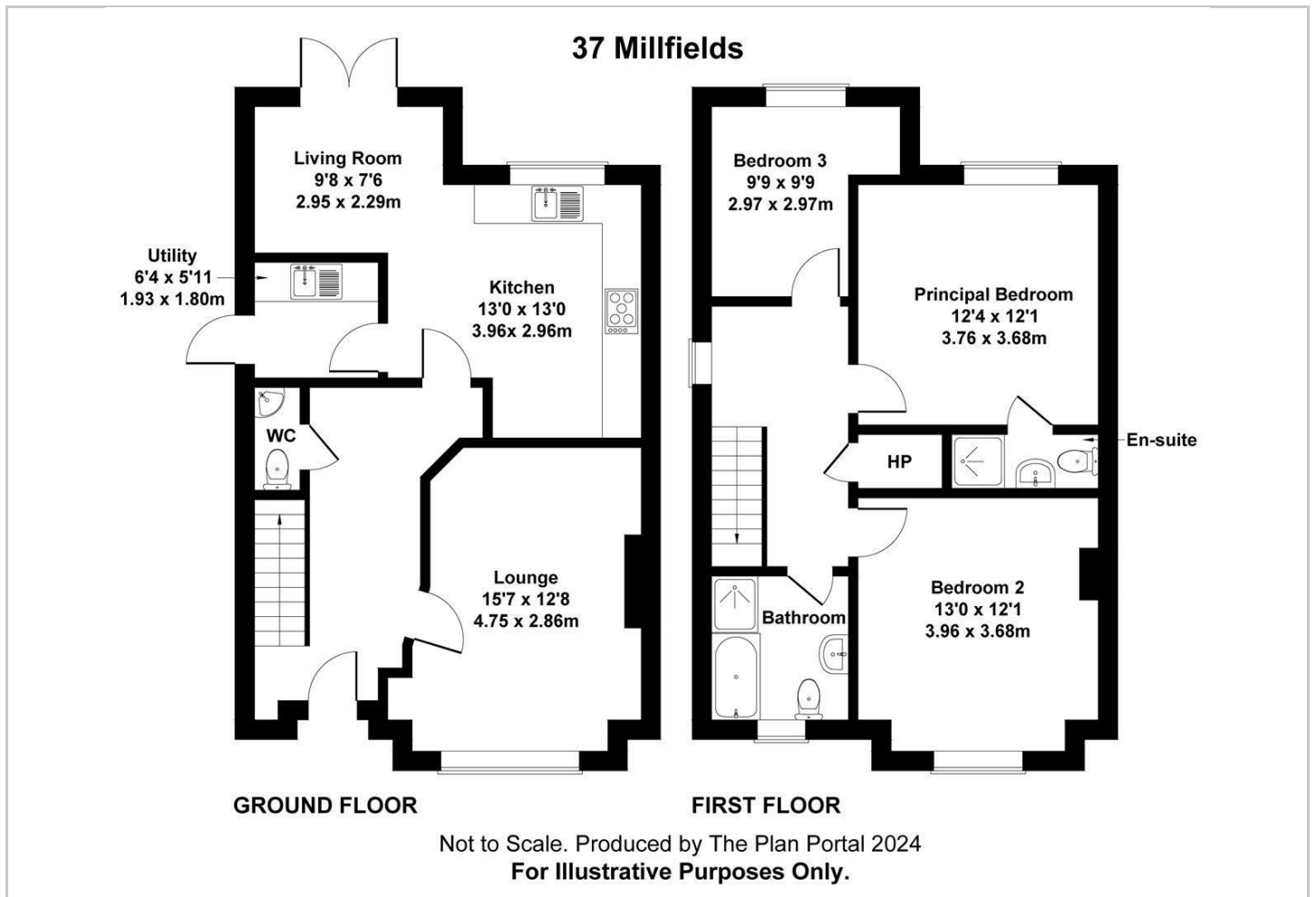
## Hybrid Map



## Terrain Map



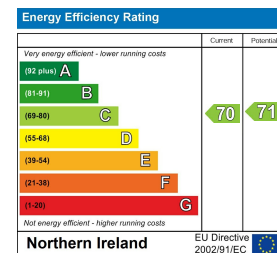
## Floor Plan



## Viewing

Please contact our Ballymena Office on 02825655733 if you wish to arrange a viewing appointment for this property or require further information.

## Energy Efficiency Graph



These particulars, whilst believed to be accurate are set out as a general outline only for guidance and do not constitute any part of an offer or contract. Intending purchasers should not rely on them as statements of representation of fact, but must satisfy themselves by inspection or otherwise as to their accuracy. No person in this firm's employment has the authority to make or give any representation or warranty in respect of the property. Edmondson Estates have not tested any services, equipment, or facilities within the premises and will not be liable, in negligence or otherwise, for any loss arising from the use of these particulars.