

1 Woodball Cottages

South Tawton

EX20 2LT



Guide Price - £325,000



1 Woodball Cottages, South Tawton, EX20 2LT

Situated on the picturesque outskirts of South Tawton, this charming three-bedroom house offers the perfect balance of character and modern convenience....



- Three-Bed House in South Tawton
- Spacious Living Room with Fireplace
- Modern Kitchen with Storage
- Large Garden for Outdoor Space
- Parking for Two Cars
- Peaceful Rural Location
- Near Dartmoor for Walks
- Ideal Family Home
- Ultrafast Fibre Broadband
- Council Tax Band - B
- EPC - TBC



Situated on the picturesque outskirts of South Tawton, this charming three-bedroom house offers the perfect balance of character and modern convenience. With a generous garden, off-road parking for two cars, and stylish interiors, this home presents an excellent opportunity for those seeking a peaceful countryside retreat while remaining within easy reach of local amenities and transport links.

Stepping inside, the property immediately impresses with its warm and inviting atmosphere. The living room is a wonderful space to relax and unwind, featuring a cosy fireplace that adds to the home's charm. Large windows allow plenty of natural light to stream in, creating a bright and airy feel while offering delightful views over the garden. The room's neutral décor and wooden flooring further enhance its character, making it an ideal setting for both quiet evenings and entertaining guests.

The kitchen has been thoughtfully designed to blend contemporary style with traditional elements, resulting in a space that is both functional and visually appealing. With modern appliances, sleek worktops, and ample storage, it caters perfectly to everyday cooking and family life.



Upstairs, the property boasts three well-proportioned bedrooms, each offering a comfortable retreat. The main bedroom enjoys a peaceful outlook over the surrounding countryside, while the additional bedrooms are ideal for children, guests, or even a home office. A modern family bathroom serves the bedrooms, featuring stylish fittings and a well-thought-out layout.

The outside space is a true highlight of this home. The large garden provides plenty of space for relaxation, play, and gardening enthusiasts alike. Whether you're looking to create a vegetable patch, enjoy summer barbecues, or simply take in the rural surroundings, this outdoor area offers endless possibilities. Additionally, a useful outbuilding provides extra storage or potential for a home workshop.

With the added benefit of off-road parking for two cars, this delightful home is both practical and appealing. South Tawton is a sought-after village on the edge of Dartmoor National Park, offering stunning countryside walks, a welcoming community, and convenient access to Okehampton and the A30. A rare find in a desirable location, this characterful property is perfect for those looking to embrace a slower pace of life without compromising on modern comforts.

Changing Lifestyles

The village of South Tawton is an attractive rural village, situated within the Dartmoor National Park. The village offers a delightful parish church and historic church room with use for community activities.

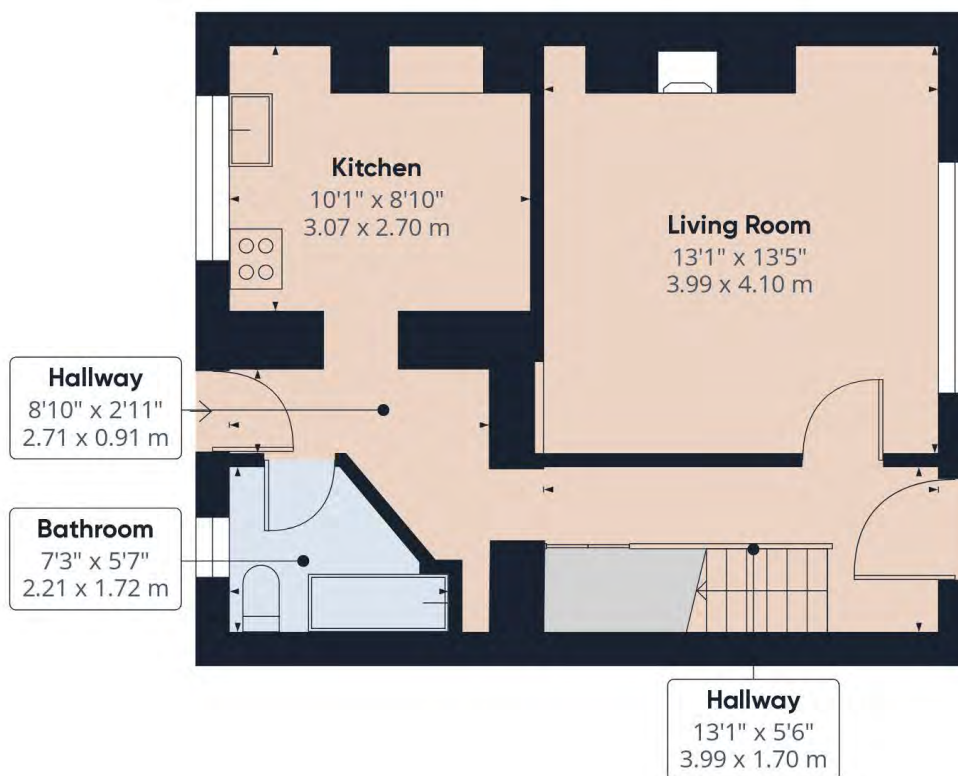
The nearby village of South Zeal offers the local primary school, post office/general store and two public houses. A more comprehensive range of services can be found in the town of Okehampton, whilst the A30 dual carriageway can be accessed at nearby Whiddon Down.



Please do not hesitate to contact
the team at
Bond Oxborough Phillips
Sales & Lettings on
01837 500600
for more information or to
arrange an accompanied viewing
on this property.

Scan here for
our Virtual Tour:



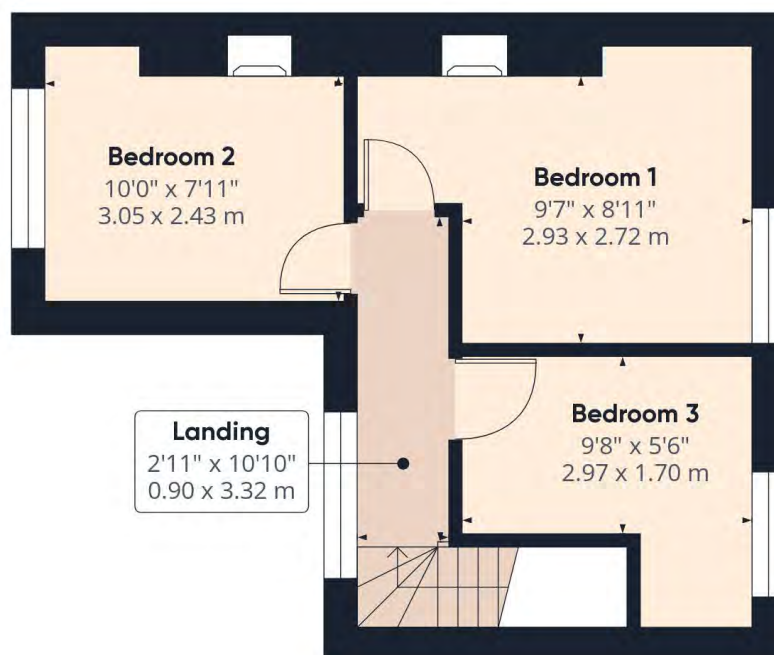


Floor 0 Building 1

Approximate total area⁽¹⁾

712.78 ft²

66.22 m²



Floor 1 Building 1

Have a property to sell or let?

If you are considering selling or letting your home, get in contact with us today on 01837 500600 to speak with one of our expert team who will be able to provide you with a free valuation of your home.

We have the facility to refer purchasers and vendors to conveyancing, mortgage advisors and Surveyors. It is your decision if you choose to deal with any of these companies however should you choose to use them we would receive a referral fee from them for recommending you. We will receive a referral fee between £50 - £300 depending on the company & individual circumstances. We have carefully selected these associates for the quality of their work and customer service levels.

Consumer Protection Regulations: We have not tested any apparatus, equipment, fixtures and fittings or services and so cannot verify that they are in working order or fit for the purpose. References to the Tenure of a Property are based on information supplied by the seller. We have not had sight of the Title Documents. A buyer is advised to obtain verification from their solicitor or surveyor. Floorplans shown are for guidance only and should not be relied upon. Items shown in photographs are NOT included unless specifically mentioned within these details. They may however be able by separate negotiation. You are advised to check the availability of this property before travelling any distance to view. Particulars are produced in good faith to the best of our knowledge and are set out as a general guide only.