



Lady Wallace Court, Lisburn,  
County Antrim, BT28

**Asking Price: £127,500**  
**Leasehold**

 **Reeds Rains**

[reedsrains.co.uk](https://www.reedsrains.co.uk)

# Lady Wallace Court, Lisburn, County Antrim, BT28

**Asking Price: £127,500 Leasehold**

Council Tax Band:

EPC Rating: C

Upper Floor 2 bedroom apartment in sought-after location within Thaxton. Spacious living area with modern kitchen and bathroom. Close to local amenities and excellent transport links. Ideal for professionals or couples. Don't miss out on this fantastic opportunity!

## Communal Entrance

Stair to top floor

## Entrance Hall

Intercom system

## Living Room Open To Kitchen

23'1" x 1'10" (7.04m x 0.56m)

Excellent modern fitted range of high and low level units, laminate work tops, single drainer stainless steel sink unit, built in gas hob and electric oven, tiled flooring, open plan to living room

## Bedroom 1

11'4" x 9'11" (3.45m x 3.02m)

Views towards Mournes

## En-suite

Separate shower cubicle with controlled shower, wash hand basin, low level WC.

## Bedroom 2

10' x 9'10" (3.05m x 3m)

## Bathroom

White suite comprising panelled bath, low level WC, wash hand basin, tiled flooring.

## Communal gardens

To side and rear, communal car parking, approached via remote operated security gates for all residents.

## Management Fees

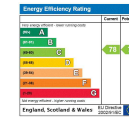
Approx £840 per annum

The Reeds Rains branches at 350 Upper Newtownards Road, Ballyhackamore, Belfast, N Ireland BT4 3EX, 18 Main Street, Bangor, Co Down, N Ireland BT20 5AG, Somerset House, 240-242 Ormeau Road, Belfast, Co Antrim, N Ireland BT7 2FZ, 10 High Street, Carrickfergus, Co Antrim, N Ireland BT38 7AF, 8/8A Carnmoney Road, Glengormley, County Antrim, N Ireland BT36 6HN, 14/16 Market Street, Lisburn, County Antrim, N Ireland BT28 1AB and 2 Frances Street, Newtownards, County Down, N Ireland BT23 4JA are operated by Favscio NI Limited which is independently owned and operated under a Licence from Reeds Rains Limited.

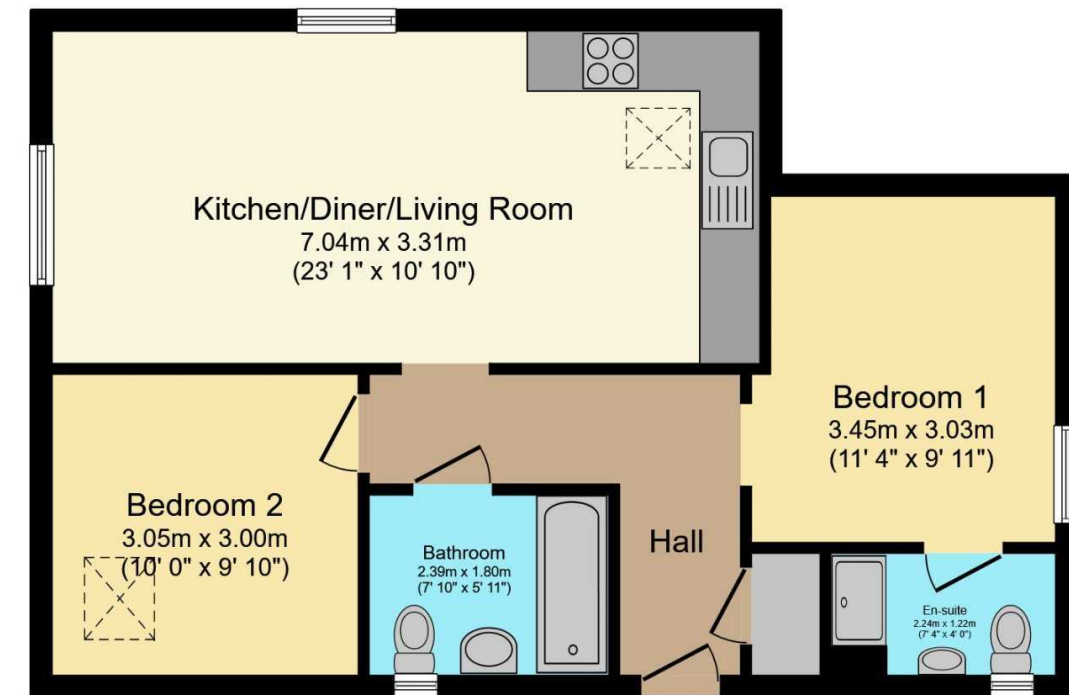
All Measurements  
All Measurements are Approximate.

Laser Tape Clause  
All measurements have been taken using a laser tape measure and therefore, may be subject to a small margin of error.

Floorplan Clause  
Measurements are approximate. Not to Scale. For illustrative purposes only.



For full EPC please contact the branch.



Total floor area 59.2 sq.m. (637 sq.ft.) approx

This floor plan is for illustrative purposes only. It is not drawn to scale. Any measurements, floor areas (including any total floor area), openings and orientation are approximate. No details are guaranteed, they cannot be relied upon for any purpose and they do not form part of any agreement. No liability is taken for any error, omission or misstatement. A party must rely upon its own inspection(s).  
Powered by [www.focalagent.com](http://www.focalagent.com)