



Bond  
Oxborough  
Phillips

*Changing Lifestyles*

1 Olde Market Court,  
Wadebridge,  
PL27 7LY



BRITISH  
PROPERTY  
AWARDS

2023



**GOLD WINNER**

ESTATE AGENT  
IN WADEBRIDGE  
& ROCK



**Guide Price - £150,000**



# 1 Olde Market Court, Wadebridge, PL27 7LY



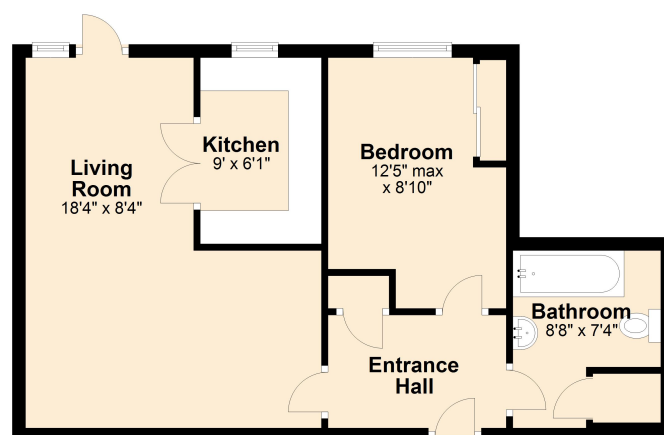
Set in the heart of Wadebridge a fabulous one bedroom apartment home, with generous living space throughout..

- Impressive One Bedroom Apartment
- Bathroom
- Private Balcony
- Spacious Living Area
- Practical Kitchen
- Communal Private Gardens
- Resident Parking
- Popular Town Location
- Council Banding - B
- EPC - TBC



## Ground Floor

Approx. 502.6 sq. feet



Total area: approx. 502.6 sq. feet

Bond Oxborough Phillips - Not to Scale  
Plan produced using PlanUp.

A one bedroom retirement apartment located on the ground floor with patio area and communal gardens. Olde Market Court was built by McCarthy & Stone and comprises of 50 apartments arranged over 3 floors served by a lift. It is conveniently situated a short, level walk from the town centre.

This apartment comprises an entrance lobby which leads into the lounge with an external door leading onto the patio area. Double doors lead from the lounge into the well equipped kitchen. Accessed via the entrance lobby is the good sized bedroom complete with built in storage and a modern bathroom.