



18 Rathmore Heights

Ballymena, BT43 6NG

Offers Around £184,950



18 Rathmore Heights

, Ballymena, BT43 6NG

Offers Around £184,950



ACCOMMODATION

GROUND FLOOR

ENTRANCE HALL

PVC Double glazed front door with side screen . Wood laminate floor covering. Access to under stair store. Stairwell to first floor.

LOUNGE

15'5 x 11'8 (4.70m x 3.56m)

Wood laminate floor covering. Open plan to Dining Room.

DINING ROOM

9'11" x 9'10" (3.02m x 3.00m)

Wood laminated floor covering.

FITTED KITCHEN

Solid Oak fitted kitchen with high and low level storage units and contrasting work tops. Integrated appliances to include eye level Neff Oven & 4 ring hob with extractor fan over. Space for Washing Machine and Fridge Freezer. Part Tiled walls. Stainless steel 1 1/2 bowl sink unit .

REAR HALL

Hardwood double glazed rear door. Tiled floor. Internal door to garage.

INTEGRAL GARAGE

Roller shutter door. Power and light. Access to roof space area . Oil fired central heating boiler.

FIRST FLOOR

LANDING

Access to roofspace and hotpress.

BEDROOM 1

12'5" x 11'8" (3.78m x 3.56m)

BEDROOM 2

11'6" x 9'4" (3.51m x 2.84m)

Access to wardrobe.

BEDROOM 3

11'0" x 7'0" (3.35m x 2.13m)

Access to wardrobe.

FAMILY BATHROOM

Fitted 4 piece suite comprising shower cubicle with mains shower over, corner bath, wash hand basin & WC. Part tiled walls. Tiled floor. Chrome towel radiator.

EXTERNAL

Low maintenance front garden in decorative stone.

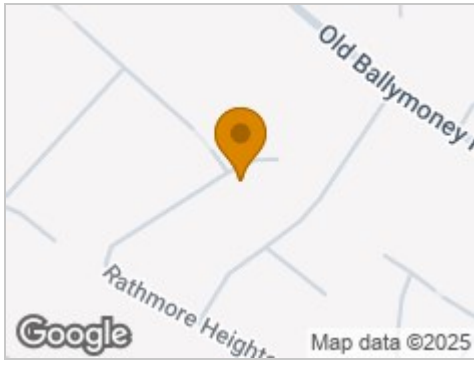
Private driveway in tarmac.

Rear garden laid in lawn with an array of shrubs and trees. Car Port .

Outside tap and light.



Road Map



Hybrid Map

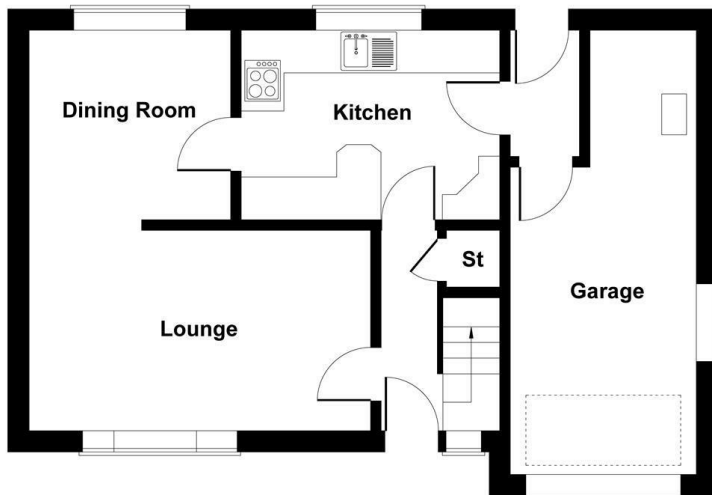


Terrain Map

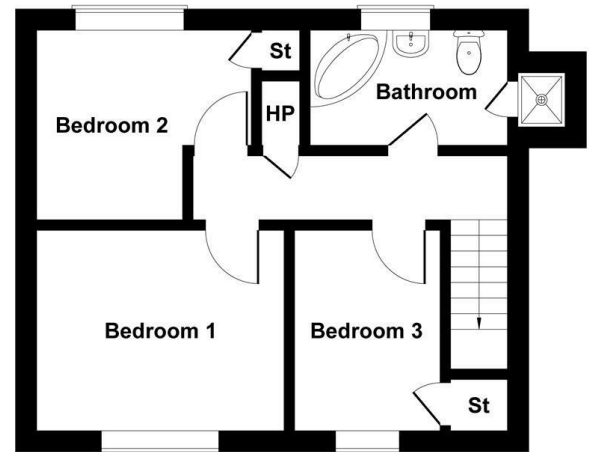


Floor Plan

18 Rathmore Heights



GROUND FLOOR



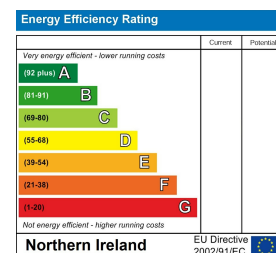
FIRST FLOOR

Not to Scale. Produced by The Plan Portal 2025
For Illustrative Purposes Only.

Viewing

Please contact our Ballymena Office on 02825655733 if you wish to arrange a viewing appointment for this property or require further information.

Energy Efficiency Graph



These particulars, whilst believed to be accurate are set out as a general outline only for guidance and do not constitute any part of an offer or contract. Intending purchasers should not rely on them as statements of representation of fact, but must satisfy themselves by inspection or otherwise as to their accuracy. No person in this firm's employment has the authority to make or give any representation or warranty in respect of the property. Edmondson Estates have not tested any services, equipment, or facilities within the premises and will not be liable, in negligence or otherwise, for any loss arising from the use of these particulars.