

28 Millhouse Meadows, Antrim, BT41 2UD



PRICE Offers Over £174,950

This is an excellent opportunity for those looking to purchase their first semi-detached property in this sought after residential development on the outskirts of Antrim town yet within easy access of local schools, Antrim Area Hospital and the bus and train station. Finished to a high standard throughout the property benefits from a spacious entrance hall with ground floor W/C together with a large living room 15'9" x 11'9" with feature contemporary style electric fireplace and composite tiled flooring. The kitchen with informal dining area boasts a 'Shaker' style range of 'Drop Cloth' coloured high and low level units together with integrated oven, hob, dishwasher together with space for a fridge freezer and washing machine. The three well proportioned bedrooms to the first floor are complimented by a stunning four piece family bathroom with modern white suite to include a free standing bath and fully enclosed shower unit. Outside, the property occupies a generous corner site with gravel off-street side by side parking for two cars and a large well maintained garden to the rear making this the ideal family home.

Early viewing strongly recommended.

>Sales >New Homes >Commercial >Rentals >Mortgages

Antrim
12 Church Street
BT41 4BA
Tel: (028) 9446 6777

Ballyclare
51 Main Street
BT39 9AA
Tel: (028) 9334 0726

Glengormley
9A Ballyclare Road
BT36 5EU
Tel: (028) 9083 0803



FEATURES

- Entrance hall with composite tiled floor / Staircase to first floor / Ground floor W/C
- Living room 15'9" x 11'9" with feature contemporary style electric fireplace with LED strip lighting
- Kitchen with informal dining area / Double glazed PVC 'French' patio doors to the rear
- Full range of 'Drop Cloth' high and low level 'Shaker' style units with 'Butcher Bloc' style worktops
- Integrated oven, hob, dishwasher and space for fridge freezer and washing machine
- First floor landing with access to loft
- Three well proportioned bedrooms
- Luxury four piece bathroom featuring a free standing bath and enclosed shower unit
- PVC double glazed windows / Oil-fired central heating
- Pink stone drive with Side by side parking for two cars / Generous corner site with fully enclosed and beautifully landscaped rear garden

ACCOMMODATION

ACCOMMODATION

OUTSIDE FRONT

Pink stone drive with space for two cars side by side. Outside tap and light. Neat lawn. Paved pathway to front door.

ENTRANCE HALL

Staircase to first floor with moulded hand rail and turned balustrading. Tile effect flooring. Gable window. Double radiator.

LIVING ROOM

15'9" x 11'9" (4.805 x 3.586)

Feature contemporary style electric fire place with LED strip lighting. Tile effect flooring. Double radiator.

GROUND FLOOR WC

Modern white suite comprising a corner pedestal wash hand basin with "monobloc" chrome mixer tap. Low flush push button WC. Decorative wood panelling to walls.

KITCHEN INTO INFORMAL DINING

23'7" x 9'9" (7.191 x 2.991)

Fully fitted range of "Drop Cloth" "Shaker style" high and low level kitchen units with "Butcher" bloc style work tops and splash back stands. Single drainer stainless steel sink unit with chrome mixer and contrasting splash back tiling. Integrated four ring halogen hob with stainless steel pyramid style over head extractor fan. Low level combination oven, grill and dish washer. Space for washing machine and fridge freezer. Wood laminate flooring. Double radiator. PVC double glazed "French" doors to rear.

FIRST FLOOR LANDING

Access to loft. Hot press with insulated copper cylinder and shelved storage. Gable window.

BEDROOM 1

12'0" x 9'9" (3.660 x 2.996)

Integrated wardrobes with sliding mirror door. Wood laminate flooring. Double radiator.

BEDROOM 2

11'9" x 11'9" (3.600 x 3.586)

Wood laminate flooring. Double radiator.

BEDROOM 3

Wood laminate flooring. Integrated storage cupboard. Single radiator.

BATHROOM

8'10" x 7'1" (2.699 x 2.175)

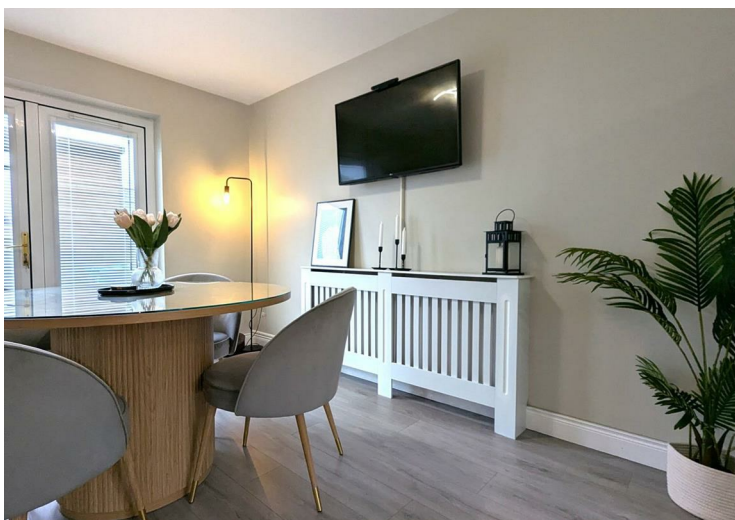
Modern white four piece suite comprising a free standing double ended bath with chrome mixer tap and shower attachment, an enclosed corner shower unit with "Mira Azora" electric shower, fully tiled walls and partially glazed sliding doors. A wall mounted wash hand basin with "monobloc" chrome mixer tap and storage unit below. Low flush push button WC. Fully tiled floor and partially tiled walls. Extractor fan. Chrome towel radiator.

OUTSIDE REAR

Beautifully landscaped rear garden offering excellent privacy. Large paved patio. Raised timber decking. Neat lawn. 6 Ft timber fencing and pedestrian gate to front. Outside power sockets. Flower bed bordering.

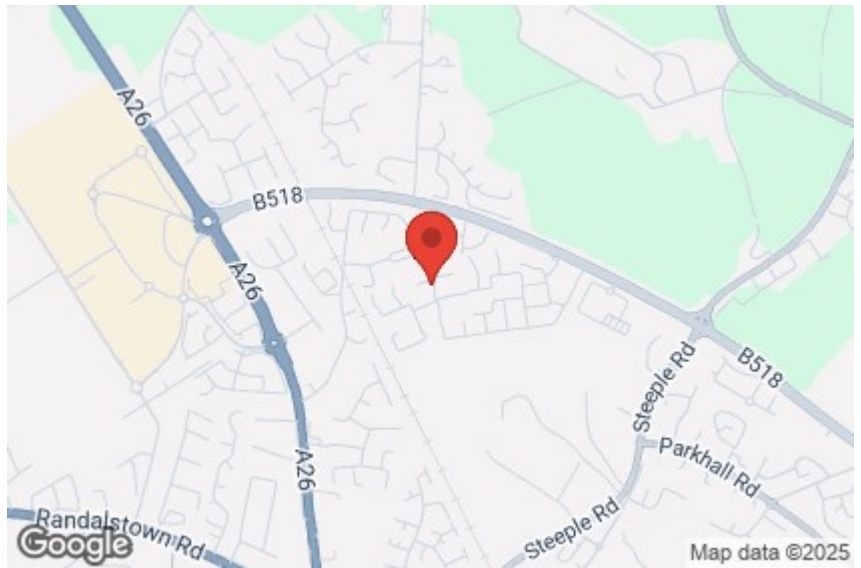
IMPORTANT NOTE TO ALL POTENTIAL PURCHASERS;

Please note, none of the services or appliances have been tested at this property





Energy Efficiency Rating		Current	Potential
<i>Very energy efficient - lower running costs</i>			
(92 plus) A			
(81-91) B			
(69-80) C			
(55-68) D		65	74
(39-54) E			
(21-38) F			
(1-20) G			
<i>Not energy efficient - higher running costs</i>			
Northern Ireland	EU Directive 2002/91/EC		



Mortgage IQ

Talk to one of our advisers today

12 Church Street, Antrim, Co. Antrim, BT41 4BA
 T: 028 9417 0000
 E: antrim@mortgageIQ.co.uk

IQ WE KNOW WHAT IT TAKES

Country Estates (N.I) Ltd. for themselves and the Vendors of this property whose agents are, give notice that:
 These particulars do not constitute any part of an offer or contract

All statements contained in these particulars as to this property are made without responsibility on the part of Country Estates (N.I) Ltd. or the vendor
 None of the statements contained in these particulars as to this property are to be relied on as statements or representations of fact
 Any intending purchaser must satisfy himself or otherwise as to the correctness of the statement contained in these particulars
 The vendor does not make or give, and neither Country Estates (N.I) Ltd. nor any person in their employment, has any authority to make or give representation or warranty whatever in relation to this property.

