



18 Lady Wallace Link, Lisburn, BT28 3AZ

£1,250 Per Month



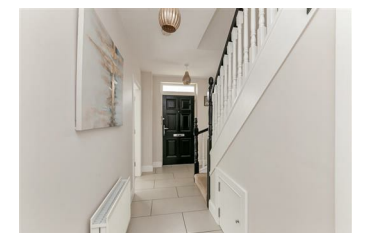
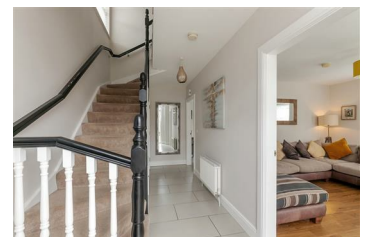
Immaculately presented, three bedroom, detached family home with private driveway and fully enclosed, generous sized rear garden, located in the popular and conveniently situated Lady Wallace development, Lisburn, in close proximity to local amenities, schools, public transport routes, and main commuter networks.

The property comprises entrance hall, furnished cloakroom, lounge, kitchen through dining room with modern fitted kitchen, three well proportioned first floor bedrooms, and family bathroom with white four piece suite.

Externally the property enjoys private driveway area finished in tarmac and fully enclosed, generous sized rear garden.

Other attributes include gas fired central heating, PVC double glazing, and convenient location.

Early viewing highly recommended to avoid disappointment.



INVESTORS IN PEOPLE
We invest in people Gold

PRS Property Redress Scheme

Proudly sponsoring



Awards



WE ARE MACMILLAN.
CANCER SUPPORT