



PAUL ROBINSON MORTGAGES

INDEPENDENT FINANCIAL ADVICE AVAILABLE

Mortgages | Life Assurance | Critical Illness | Accident, Sickness & Redundancy Cover |
Income Protection | Buildings & Contents Insurance | Trusts |

To arrange an initial appointment please contact:

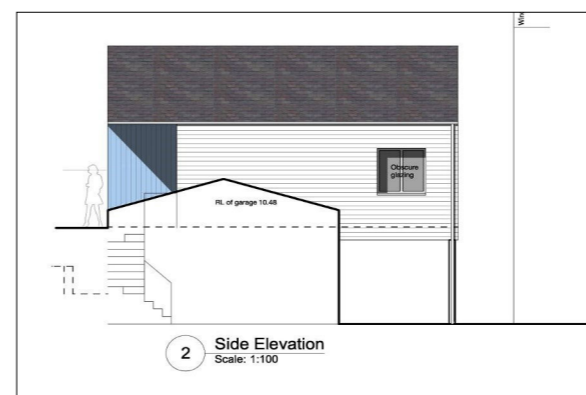
ARMSTRONG GORDON

YOUR HOME MAY BE REPOSSESSED IF YOU DO NOT KEEP UP REPAYMENTS ON YOUR MORTGAGE.

Typically we do not charge a fee for mortgage advice. However depending upon your circumstances a fee of up to 1.5% of the mortgage amount may be charged. Approval Number H0114170



ARMSTRONG GORDON



SITE FOR FISHERMAN'S COTTAGE

PORTSTEWART

Harbour Place

BT55 7AY

Offers Over £125,000



64 The Promenade Portstewart BT55 7AF

T. 028 7083 2000

F. 028 7083 2950 E. info@armstronggordon.com W. www.armstronggordon.com

Armstrong Gordon & Co. Ltd Estate Agents for themselves and for the vendors and for the lessors of this property whose agents they are given notice that: (1) the particulars are set out as a general outline only for the guidance of intending purchasers or lessees, and do not constitute, nor constitute part of an offer or contract; (2) all descriptions, dimensions, references to condition and necessary permissions for use and occupation and other details are given without responsibility and any intending purchaser or tenants should not rely on them as statements or representations of fact but must satisfy themselves by inspection or otherwise as to the correctness of each of them; (3) no person in the employment of Armstrong Gordon has any authority to give any representation or warranty whatever in relation to this property

028 7083 2000
www.armstronggordon.com

Amazing little site for fisherman's cottage type dwelling located immediately beside Portstewart Promenade and harbour and having full planning permission in place for a superbly designed fisherman's cottage with vehicle right of way from Harbour Road.

Travelling along Portstewart Promenade from the Diamond roundabout, proceed to the end and pass the harbour situated on your left. Just after Causeway Coast Rentals, take your immediate left into the garage door opening about 20m from the corner.

ACCOMMODATION COMPRISES:

SPECIAL FEATURES:

- ** Superbly Situated Site With Parking Adjacent To Portstewart Promenade & Harbour
- ** Ready To Start Site
- ** Large Garage At Ground Floor Level
- ** Planning Ref No. : 2019/0611/F
- ** Full Building Plans Available From Agent
- ** Services On Edge Of Site

