

For Sale

Apt A, 48 The Promenade, Portstewart BT55 7AE

Offers Over **£220,000**



Property Overview

- First Floor Apartment
- 2 Bedrooms, 1 Reception Room
- Economy 7 heating
- uPVC double glazed windows
- Town centre location
- Panoramic sea and coastline views
- There is also the opportunity to purchase the ground floor retail unit. For further details contact O'Connor, Kennedy & Turtle, Coleraine on 028 7034 4244
- EPC Rating - E49

Apt A, 48 The Promenade, Portstewart BT55 7AE

Communal Hall:

With staircase leading to First Floor.

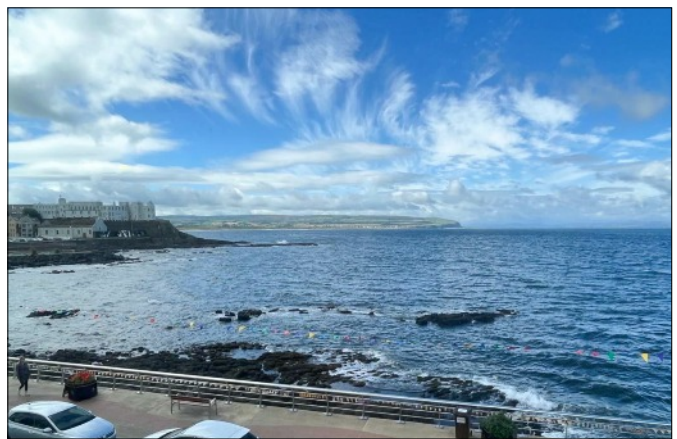
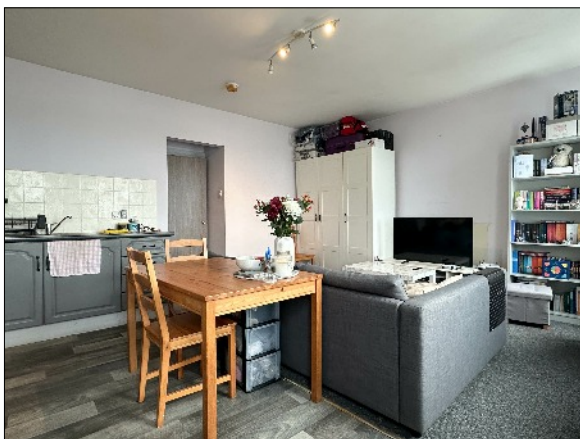
Entrance Hall

Open Plan Lounge / Kitchen/ Dining Area:

5.1m x 4.9m (16' 9" x 16' 1") (max) with sea views to The Strand Beach, Mussenden Temple and beyond to Donegal.

Lounge / Dining Area:

With television point.



Kitchen:

With eye and low levels units, single drainer stainless steel sink unit, tiled between units, space for cooker, space for fridge / freezer, extractor fan, plumbed for washing machine.

Apt A, 48 The Promenade, Portstewart BT55 7AE

Bedroom 1:

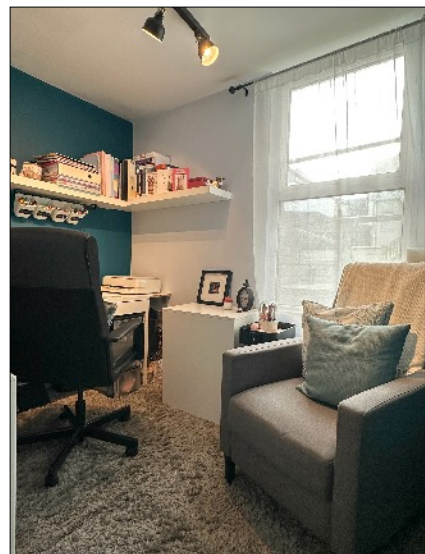
3.7m x 2.2m (12' 2" x 7' 3") with built-in wardrobes, bedside cabinets and overhead units, wall lights.



Steps leading to:

Bedroom 2 / Study:

2.4m x 1.7m (7' 10" x 5' 7")



Apt A, 48 The Promenade, Portstewart BT55 7AE

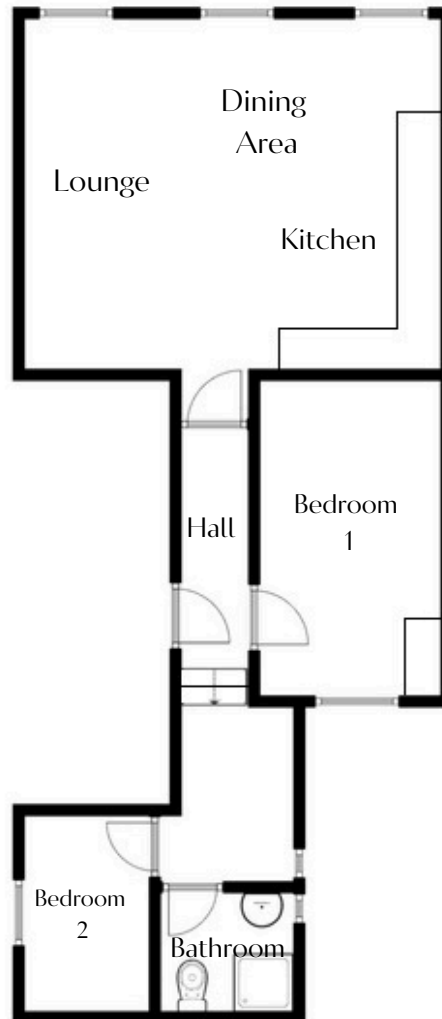
Bathroom and w.c. Combined:

Comprising wash hand basin, tiled splashback, w.c., PVC panelled shower cubicle with electric shower fitting, extractor fan.



Apt A, 48 The Promenade, Portstewart BT55 7AE

FLOOR PLANS



FIRST FLOOR

For illustrative purposes only. Not to scale.

Whilst every attempt has been made to ensure accuracy of the floor plan all measurements are approximate and no responsibility is taken for any error, omission or measurement.

MISREPRESENTATION CLAUSE: McAfee Sales, give notice to anyone who may read these particulars as follows:

1. The particulars are prepared for the guidance only for prospective purchaser. They are intended to give a fair overall description of the property but are not intended to constitute part of an offer or contract.
2. Any information contained herein (whether in the text, plans or photographs) is given in good faith but should not be relied upon as being a statement of representation or fact.
3. Nothing in these particulars shall be deemed to be a statement that the property is in good condition or otherwise nor that any services or facilities are in good working order.
4. The photographs appearing in these particulars show only certain parts of the property at the time when the photographs were taken. Certain aspects may be changed since the photographs were taken and it should not be assumed that the property remains precisely as displayed in the photographs. Furthermore, no assumptions should be made in respect of parts of the property which are not shown in the photographs.
5. Any areas, measurements or distances referred to herein are approximate only.
6. Where there is reference in the particulars to the fact that alterations have been carried out or that a particular use is made of any part of the property this is not intended to be a statement that any necessary planning, building regulations or other consents have been obtained and these matters must be verified by an intending purchaser.
7. Descriptions of the property are inevitably subjective and the descriptions contained herein are given in good faith as an opinion and not by way of statement of fact.
8. None of the systems or equipment in the property has been tested by McAfee Sales for Year 2000 Compliance and the Purchasers/ Lessees must make their own investigations.

Apt A, 48 The Promenade, Portstewart BT55 7AE



Property Location:

On approaching Portstewart along the Coleraine Road continue through the Diamond roundabout onto The Promenade. Continue along and Apt 48A is situated on the right hand side.

Rates 2024 / 2025: £882.36

Tenure: TBC

Apt A, 48 The Promenade, Portstewart BT55 7AE

Energy Efficiency Rating	
Current	Potential
Very energy efficient - lower running costs	
A 92-100	
B 81-91	
C 69-80	
D 55-68	63
E 39-54	49
F 21-38	
G 1-20	
Not energy efficient - higher running costs	

Northern Ireland EU Directive 2002/91/EC

Full EPC available on request

OFFICE OPENING HOURS

Monday	09:00	-	17:00
Tuesday	09:00	-	17:00
Wednesday	09:00	-	17:00
Thursday	09:00	-	17:00
Friday	09:00	-	17:00
Saturday	09:30	-	12:30
Sunday	Closed		

WEBSITE AND E-MAIL

www.mcafeeproperties.co.uk
portstewart@mcafeeproperties.co.uk

PROPERTY REFERENCE

PST1511 180225/MH

OUR OFFICE LOCATION



Think

FINANCIAL SERVICES

by Clare

- Residential Mortgages
- Re-mortgages
- Self Build Mortgages
- Buy To Let Mortgages
- Holiday Let Mortgages
- Life Cover
- Critical Illness Cover
- Income Protection
- Buildings & Contents Cover
- Landlord Insurance

Contact Clare on 028 7083 2233 / 07739 707 078

Think Financial Services is an Appointed Representative of PRIMIS Mortgage Network. PRIMIS Mortgage Network is a trading name of First Complete Ltd which is authorised and regulated by the Financial Conduct Authority for mortgages, protection insurance and general insurance products.