



**4 Bed  
House - Mid Terrace  
located in**

**LONGSTAND**

60 Shaftesbury Avenue

Belfast

BT7 2ES



4



1



1



E

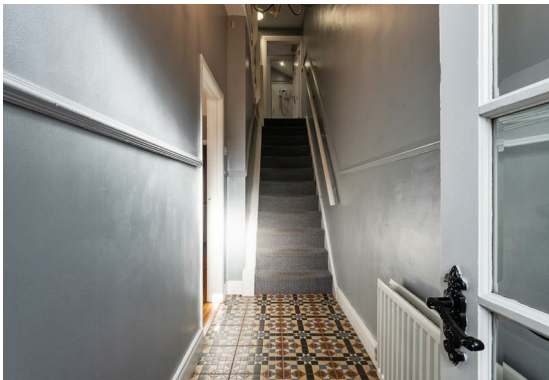
£1,250 Per month

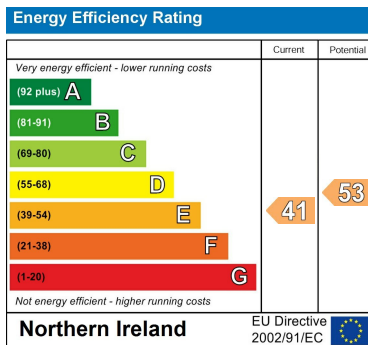
Located off the Ormeau Road, and within minutes' walk of the River Lagan, Longstand property presents this spacious four bedroom mid-terrace to the rental market. In total the property measures 1,195ft<sup>2</sup>, features two double and two single bedrooms, a modern four-piece bathroom suite and ample on street car parking.

In brief, the property comprises entrance hallway with mosaic tiling, open-plan living/dining space and kitchen with rear yard access on the ground floor. Upstairs, there is one double bedroom, one single bedroom and bathroom on the first floor with a further double and single bedroom on the second floor. The heating is oil-fired with the boiler and tank located in the rear yard.

More about the location...

Situated off the bustling Ormeau Road, Shaftesbury Avenue is quiet, tree lined avenue with the River Lagan walkway on its doorstep and Belfast city centre within a 15 minute walk. Further amenities within easy access include QUB, The Gasworks and Botanic Train Station.





DIRECTIONS

CONTACT

14 Barnett's Road  
 Belfast  
 Antrim  
 BT5 7BA

E: [info@longstandproperty.com](mailto:info@longstandproperty.com)

T: 7732808952

[longstandproperty.com](http://longstandproperty.com)

LONGSTAND