



20 LEATHEN SQUARE

Belfast, BT16 2QL

Offers over **£149,950**

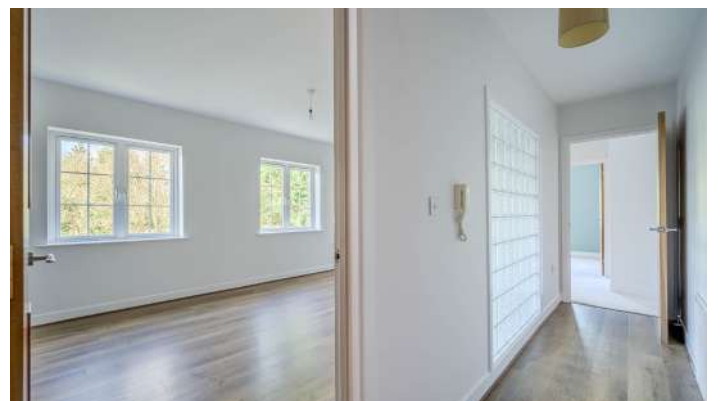


SECOND FLOOR APARTMENT | 2  | 2  | 1 

We are delighted to bring to the market this fantastically presented two-bedroom, second floor apartment located in the picturesque Leathem Square development just off Comber Road.

KEY FEATURES

- Spacious Two Bedroom Second Floor Apartment Located in Dundonald, East Belfast
- Close Proximity to the Glider Bus Service and Main Arterial Transport Routes
- Convenient Location with Belmont and Ballyhackamore Only Ten Minutes' Drive
- Bright and Spacious Living Room
- Fitted Kitchen
- Two Well Proportioned Bedrooms, Main Bedroom with En-Suite Shower Room
- Family Bathroom with White Suite
- Residents Parking
- Gas Fired Central Heating
- UPVC Double Glazing Throughout
- Lift Access to All Floors
- Broadband Speed - Ultrafast
- Early Viewing Highly Recommended



ROOM DETAILS

Ground Floor

- Reception Porch
- Reception Hall
- Living Room
15'7" x 11'11"
- Kitchen
11'11" x 8'1"
- Rear Hallway
- Bedroom One
10'4" x 8'11"
- Ensuite Shower Room
- Bedroom Two
12'3" x 7'10"
- Bathroom

Outside

- Resident Car Parking



DIRECTIONS

Travelling along the East Link Road in the direction of Comber Road, turn left on to Leathem Square. Number 20 is located on the left hand side



THE LOCAL AREA

East Belfast is a dynamic part of the city, full of beautiful residential areas and a wide variety of amenities that make it a wonderful place to live. Bustling villages, beautiful parks, and fantastic local schools are just a few of the reasons why so many wish to call it home.

ENERGY EFFICIENCY RATING		
	CURRENT	POTENTIAL
92+ A		
81-91 B		
69-80 C		
55-68 D	76	76
39-54 E		
21-38 F		
1-20 G		
<i>NOT energy efficient - higher running costs</i>		

Scan QR Code - for floor plans and to arrange a viewing.



OUR BRANCHES

B' FAST (028) 9065 3333 H'WOOD (028) 9042 8888 BANGOR (028) 9131 3833 D'DEE (028) 9188 8881 COMBER (028) 9187 1212

property@johnminnis.co.uk

JOHNMINNIS.CO.UK     

