



  
Raymond  
Potterton

4 The Courtyard, Old Cornmarket, Navan, Co. Meath C15A2C5

€229,950


BER C2





New to the market comes this stunning extra large top floor 2-bedroom apartment for sale in the picturesque town centre of Navan. This spacious, modern unit offers a comfortable and stylish living experience been in the heart of the town centre with stunning views of the town.



# 4 The Courtyard, Old Cornmarket, Navan, Co. Meath C15A2C5

 915.00 sq ft

 2 Bedrooms

 2 Bathrooms

## INTRODUCTION

The apartment features generously sized rooms, providing abundant natural light and breathtaking views of the town from the property. The open-concept living area seamlessly flows into a well-appointed kitchen and ample counter space. The living room is perfect for entertaining or relaxing

This property offers a unique combination of urban convenience and natural beauty, with easy access to Navan's amenities, shops, and restaurants.

This 2-bedroom apartment is in a small complex with 6 apartments with a stunning outdoor communal courtyard. It is an excellent opportunity for those seeking a comfortable and stylish home in the heart of Navan

Accommodation includes Entrance Hall, Kitchen / Dining area / Lounge, 2 Bedrooms (Main Ensuite), Family Bathroom and two storage rooms.

## ACCOMMODATION

### Entrance Hall

10'2" x 12'5"  
With wooden flooring.

### Kitchen / Living / Dining

20'11" x 20'4"  
With wooden flooring, built in wall and floor units, washing machine, oven/hob, extractor fan, fridge/freezer, gas fire with feature mantel piece and floor to ceiling windows.

### Bedroom 1

12'5" x 11'9"  
With wooden flooring.

### Ensuite

3'7" x 9'2"  
With tiled flooring, w.h.c and w.c.

### Bedroom 2

12'5" x 10'5"  
With wooden flooring.

### Bathroom

10'2" x 7'2"  
With tiled flooring, w.h.c, w.c and bath.

## FEATURES

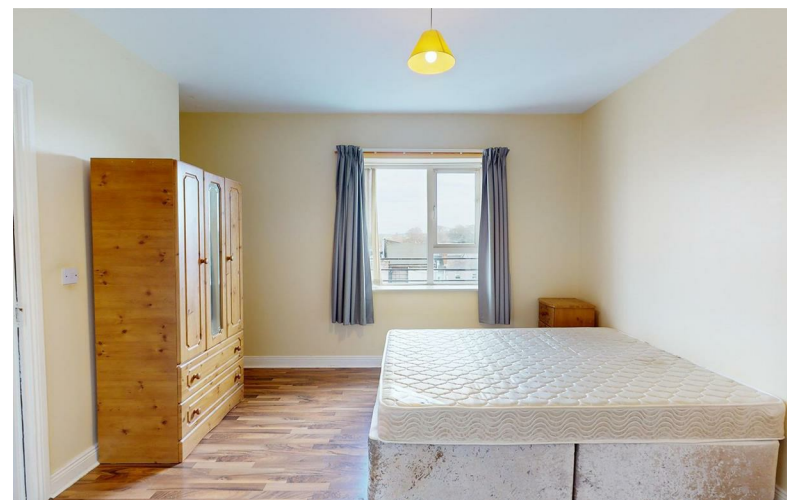
- Excellent condition
- Ideal for first time buyers & investors alike
- Includes appliances
- Close to Navan Town Centre
- Residential disc parking area
- Spacious bright apartment
- 2 Double Bedrooms
- Previous Rent €1250 pm

## FIXTURES & FITTINGS

All flooring, appliances, curtains and blinds are included with the sale

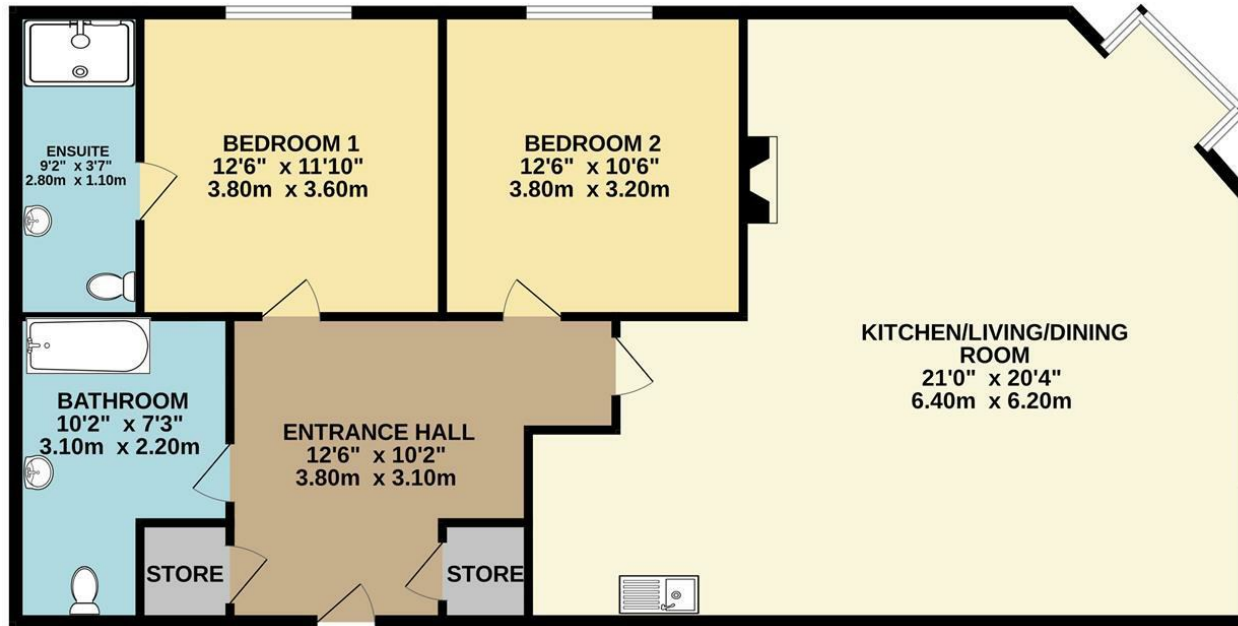
## DIRECTIONS

EIRCODE: C15 A2C5



# FLOOR PLAN

## GROUND FLOOR



TOTAL FLOOR AREA : 915sq.ft. (85.0 sq.m.) approx.

Whilst every attempt has been made to ensure the accuracy of the floorplan contained here, measurements of doors, windows, rooms and any other items are approximate and no responsibility is taken for any error, omission or mis-statement. This plan is for illustrative purposes only and should be used as such by any prospective purchaser. The services, systems and appliances shown have not been tested and no guarantee as to their operability or efficiency can be given.

Made with Metropix ©2025

