



12 Braidwater Gardens

Broughshane, Ballymena, BT42 4LA

Offers Around £130,000



12 Braidwater Gardens

Broughshane, Ballymena, BT42 4LA

Offers Around £130,000



ACCOMMODATION

GROUND FLOOR

ENTRANCE HALL

PVC double glazed front door with side screen. Stairwell to first floor. Tiled floor.

LOUNGE

12'9 x 10'1 (3.89m x 3.07m)
plus bay. Box bay window. Low level storage.

KITCHEN WITH INFORMAL DINING AREA

12'10 x 10'10 (3.91m x 3.30m)
widest points. Modern fitted shaker style kitchen with high and low level storage units and worksurfaces. Space for fridge freezer and washing machine. Cooker with 4 ring electric hob and extract fan over. Access to store. PVC double glazed rear door. Part tiled walls and tiled floor.

FAMILY BATHROOM

Fitted three piece suite comprising panelled bath with electric shower over, wash hand basin and WC. Fully tiled walls and tiled floor.

FIRST FLOOR

LANDING

Access to roof space with gas fired central heating boiler.

BEDROOM 1

12'10 x 10'10 (3.91m x 3.30m)
widest points.

BEDROOM 2

12'9 x 9'5 (3.89m x 2.87m)
Access to wardrobe.

BEDROOM 3

10'10 x 6'8 (3.30m x 2.03m)

EXTERNAL

Private driveway in tarmac.
Secure, low maintenance rear garden.
Access to outside store with space for tumble dryer.
Outside tap and lighting.



Road Map



Hybrid Map

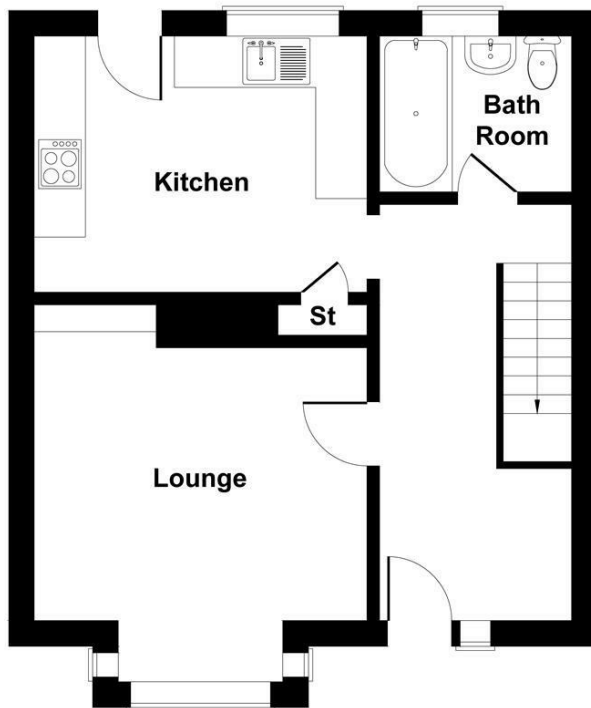


Terrain Map

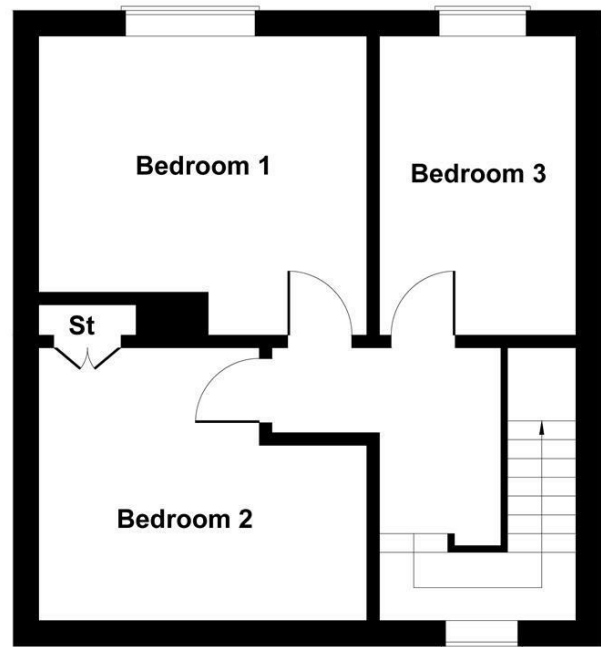


Floor Plan

12 Braidwater Gardens



GROUND FLOOR



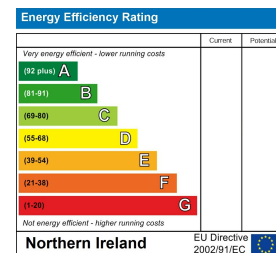
FIRST FLOOR

Not to Scale. Produced by The Plan Portal 2025
For Illustrative Purposes Only.

Viewing

Please contact our Ballymena Office on 02825655733 if you wish to arrange a viewing appointment for this property or require further information.

Energy Efficiency Graph



These particulars, whilst believed to be accurate are set out as a general outline only for guidance and do not constitute any part of an offer or contract. Intending purchasers should not rely on them as statements of representation of fact, but must satisfy themselves by inspection or otherwise as to their accuracy. No person in this firm's employment has the authority to make or give any representation or warranty in respect of the property. Edmondson Estates have not tested any services, equipment, or facilities within the premises and will not be liable, in negligence or otherwise, for any loss arising from the use of these particulars.