



Bond  
Oxborough  
Phillips

*Changing Lifestyles*

21 Olde Market Court,  
Wadebridge,  
PL27 7LY



BRITISH  
PROPERTY  
AWARDS

2023



**GOLD WINNER**

ESTATE AGENT  
IN WADEBRIDGE  
& ROCK



**Guide Price - £150,000**



Changing Lifestyles

01208 814055

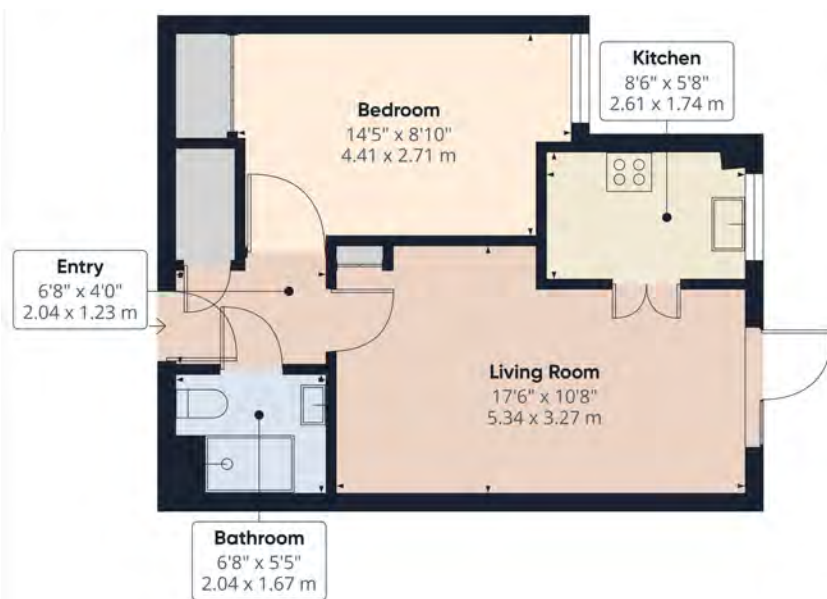


# 21 Olde Market Court, Wadebridge, PL27 7LY



Set in the heart of Wadebridge a fabulous one bedroom apartment home, with generous living space throughout..

- Impressive One Bedroom Apartment
- Family Bathroom
- Private Balcony
- Spacious Living Area
- Practical Kitchen
- Communal Private Gardens
- Resident Parking
- Popular Town Location
- Council Banding - B
- EPC - B



A fantastic opportunity to acquire a well-presented one-bedroom apartment located on the first floor of the highly sought-after Olde Market Court estate in Wadebridge.

The property offers a spacious bedroom and a family-sized bathroom, complete with a shower, WC, and basin. The bright living/dining area is ideal for relaxation or entertaining, and there is a separate kitchen space. Additionally, the apartment benefits from a private terrace, providing an outdoor area to enjoy. Residents have access to well-maintained private garden spaces, and the property comes with allocated residential parking.

Olde Market Court, built by McCarthy & Stone, comprises 50 apartments arranged over three floors, all served by a lift for easy access. Conveniently situated just a short, level walk from Wadebridge town centre, this development offers the perfect balance of peaceful living and close proximity to local amenities. The Development Manager can be contacted from various points within the property in case of an emergency, and when the manager is off duty, a 24-hour emergency Appello call system is available for added peace of mind. Please note that the property is intended for residents aged 60 or over, or for couples where one resident is 60 or older and the other is 55 or older.

This apartment is an excellent opportunity for those seeking a well-maintained, low-maintenance home in a vibrant and supportive community.