



# LAVERY MITCHELL

CHARTERED SURVEYORS,  
LETTING AGENTS &  
PROPERTY CONSULTANTS

Tel: 028 9557 5555

Email: [info@laverymitchell.com](mailto:info@laverymitchell.com)

[www.laverymitchell.com](http://www.laverymitchell.com)



## **5 Ro Rua, Toomebridge, Antrim, BT41 3UJ**

**Offers Around £184,950**

- A Stylish and Well-Presented Modern Townhouse
- Nearby Amenities: Close to Magherafelt, Randalstown, and Antrim
- A Perfect Combination of Comfort and Convenience
- Perfect Location for Commuters
- Get in Contact Today - Early Viewing Recommended!
- Master Bedroom with En-Suite Also Has Walk-In-Wardrobe/Office Space
- Modern Shaker Style Kitchen
- 4 Bedroom Property
- Family Bathroom and Downstairs W/C
- Spacious Back Garden with Patio Area



**Lavery Mitchell are delighted to bring to the market this stunning 4-bedroom townhouse, located in the sought after Ro Rua Development in the village of Toomebridge. Ideally positioned between Belfast and Derry, this property offers an excellent location for commuters. The nearby towns of Magherafelt, Randalstown, and Antrim provide a wide range of shopping, educational, and recreational amenities, while Belfast International Airport is just a 25-minute drive away. This home combines comfort and convenience, making it an ideal choice for modern living.**

Kitchen and Dining Area  
18'6" x 10'8"



A modern shaker style kitchen with low and high rise units with a spacious dining area.

Landing  
16'8" x 11'10"



A bright spacious landing area with a white painted stairwell with stylish carpets and wallpaper.

Living Room  
10'6 x 16'11



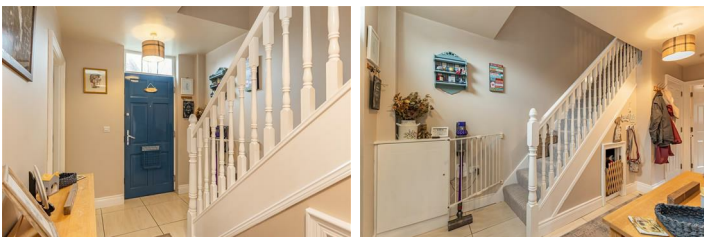
A bright and spacious living room at the front of the house with modern laminate flooring.

Main Bathroom  
10'5" x 5'11"



A white 4 piece, family bathroom, with cream floor tiles and modern decor throughout.

Entrance Hall  
16'8" x 7'2"



A bright and spacious entrance hallway with cream tiles and carpeted stairs.

W/C  
6'2" x 3'4"

W/C on the ground floor, under the staircase.

Bedroom 1  
15'1 x 10'4



A bright front facing, spacious, bedroom. A tastefully decorated room with cream painted walls and carpet.



Bedroom 2  
10'2" x 10'5"



A rear facing bedroom with freshly painted walls and carpet.

Bedroom 3  
7'5 x 10'6



Currently used as an office/study space to the rear of the house.

Master Bedroom



Spacious third floor bedroom which has a walk-in wardrobe area or could also be used as an office space. The master bedroom also includes a modern en-suite. With 2 windows the room fills up with natural light. Measurements: Bedroom: 19'0" x 14'6"; Walk-In-Wardrobe/Shelved Office Measurements; 10'2" x 6'9". En-Suite Measurements: 7'5" x 6'9"

Back Garden



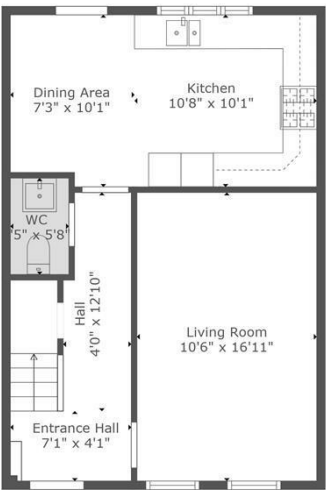
A large enclosed back garden with patio area.

Front Driveway

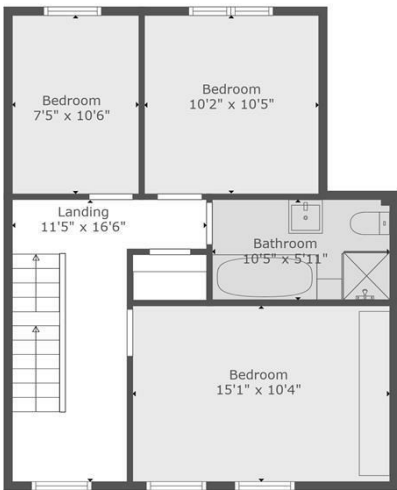


A tarmac driveway with space for two vehicles.

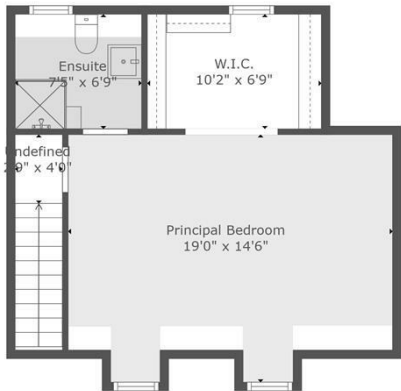




Floor 1

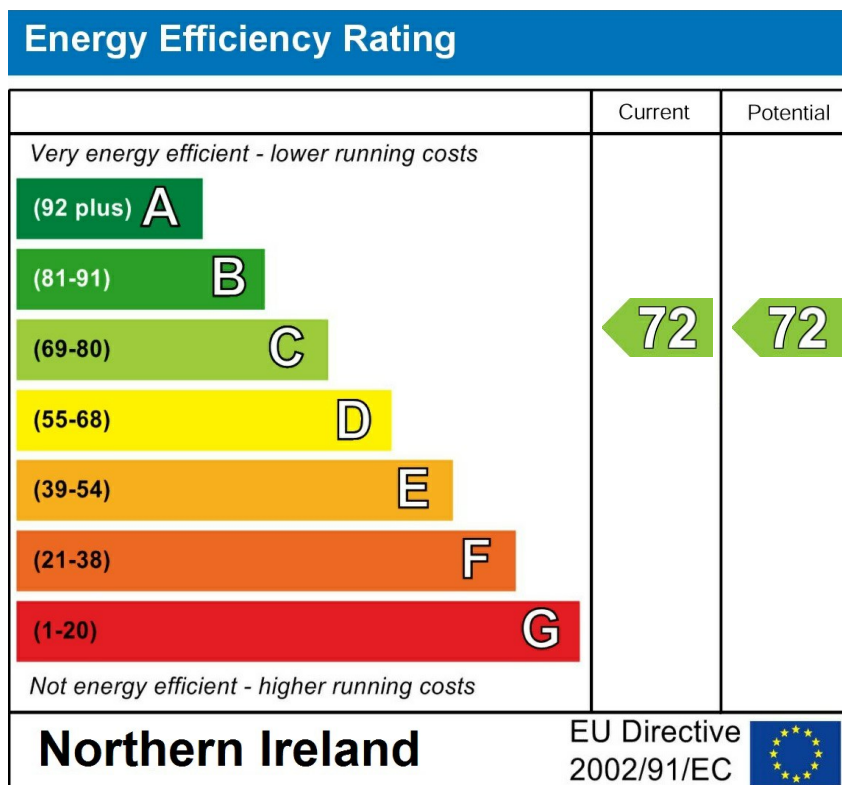
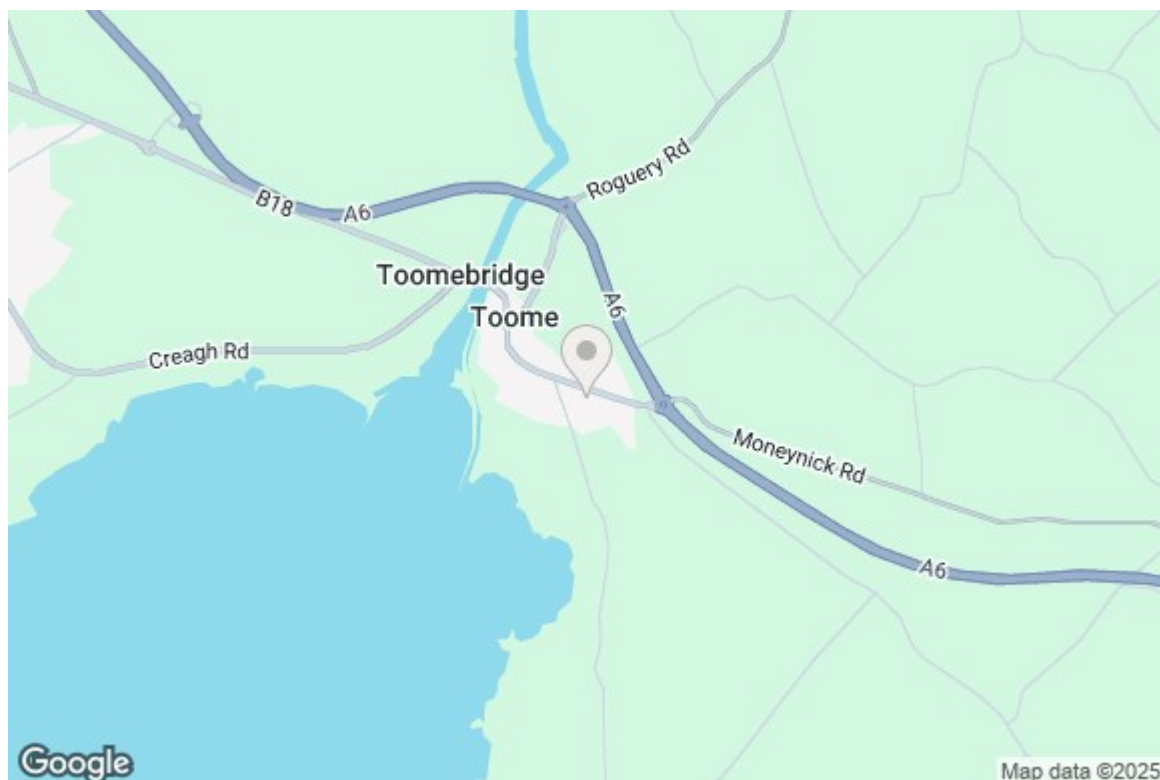


Floor 2



Floor 3

**TOTAL: 1426 sq. ft**  
 FLOOR 1: 491 sq. ft, FLOOR 2: 560 sq. ft, FLOOR 3: 375 sq. ft  
 EXCLUDED AREAS: LOW CEILING: 42 sq. ft



Lavery Mitchell Ltd for themselves and for the vendors of this property have endeavoured to prepare these sales details as accurate and reliable as possible for the guidance of intending purchasers or lessees. These particulars are given for general guidance only and do not constitute any part of an offer or contract. The seller and us as agents, do not make any representation or give any warranty in relation to the property. We would recommend that all information contained in this brochure about the property be verified by yourself or professional advisors. Services, fittings and equipment referred to in the sales details have not been tested (unless otherwise stated) and no warranty will be given as to their condition. All measurements contained within this brochure are approximate.

Wellington Park Business Centre, 3 Wellington Park, Belfast, BT9 6DJ.  
Unit C11 The Business Centre, 80-82 Rainey Street, Magherafelt, BT45 5AJ.  
Tel: 028 9557 5555 Email: info@laverymitchell.com www.laverymitchell.com

**PRS**  
Property Redress Scheme

**ico.**  
Information Commissioner's Office

**RICS**