



Bond
Oxborough
Phillips

Changing Lifestyles

31 Saxon Road

Tavistock

PL19 8JS



Asking Price - £250,000



Changing Lifestyles

01822 600700



- Fantastic Ground Floor Apartment
- Offering Three Bedrooms
- En Suite Shower Room & Bathroom
- Kitchen & Pantry
- Living/ Dining Room with Attractive Baywindow
- Overlooking the Grounds
- Off Road Parking



This fantastic three-bedroom ground floor apartment is located in a highly sought-after area, offering both comfort and convenience. With views overlooking well-maintained grounds, the property provides a peaceful and scenic environment. The apartment boasts three generously sized bedrooms, including a master suite complete with a modern en suite shower room, providing the perfect private retreat.

In addition to the en suite, there is a stylish family bathroom, offering excellent functionality for residents and guests alike. There is a separate kitchen and cleverly designed pantry for added storage. An additional airing cupboard provides further storage, adding to the practicality of the apartment.



The living and dining room is a bright and inviting space, thanks to the large bay window that fills the room with natural light and offers a delightful view of the surrounding area. This open and airy space is perfect for both relaxing and entertaining.

For added convenience, the apartment includes off-road parking, ensuring that you always have a designated space. With its ideal location, functional layout, and thoughtful features, this apartment offers a truly exceptional living experience.

Changing Lifestyles

Tavistock is a thriving stannary market town in West Devon, nestled on the western edge of Dartmoor National Park. Tavistock is an ancient town, rich in history dating back to the 10th century and famed for being the birthplace of Sir Francis Drake. Largely the 19th-century town centre is focused around Bedford Square which is a short stroll from this property.

The town offers a superb range of shopping, boasting the famous Pannier Market and a wide range of local and national shops. Also there are public houses, cafes, restaurants, social clubs, riverside park, leisure centre, theatre, doctors' surgery, dentists and Tavistock Hospital. There are excellent educational facilities including primary and secondary schools in the state and private sector. The town has superb recreation and sporting facilities including; Tennis club, bowls club, golf club, cricket clubs, football club and athletics track.

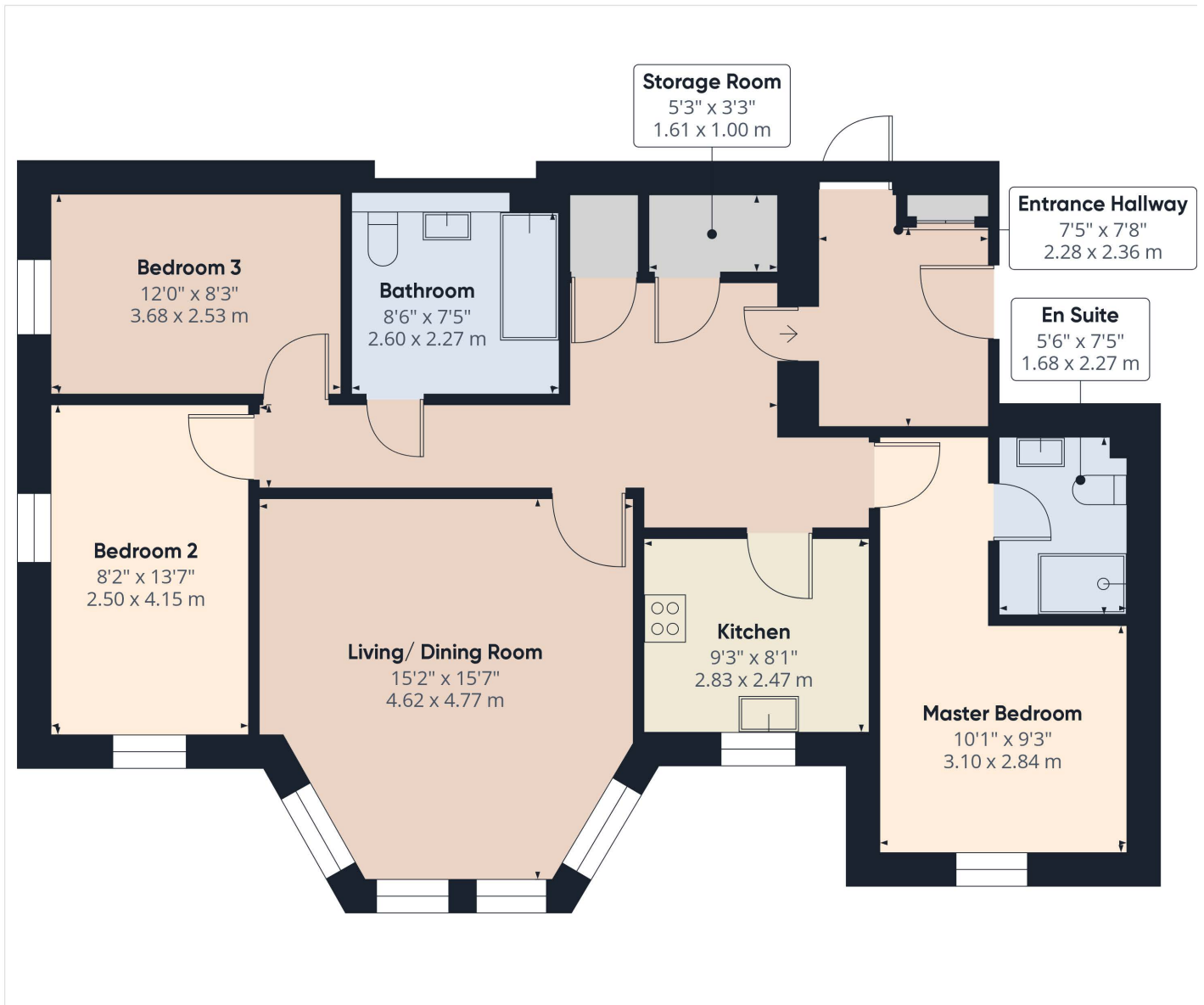
Plymouth, some 15 miles to the south, offers extensive amenities. The cathedral city of Exeter lies some 40 miles to the northeast, providing transport connections to London and the rest of the UK via its railway links and the M5 motorway.



Please do not hesitate to contact the team at Bond Oxborough Phillips Sales & Lettings on **01822 600700** for more information or to arrange an accompanied viewing on this property.

Scan here for our Virtual Tour:





Have a property to sell or let?

If you are considering selling or letting your home, get in contact with us today on 01822 600700 to speak with one of our expert team who will be able to provide you with a free valuation of your home.

We have the facility to refer purchasers and vendors to conveyancing, mortgage advisors and Surveyors. It is your decision if you choose to deal with any of these companies however should you choose to use them we would receive a referral fee from them for recommending you. We will receive a referral fee between £50 - £300 depending on the company & individual circumstances. We have carefully selected these associates for the quality of their work and customer service levels.

Consumer Protection Regulations: We have not tested any apparatus, equipment, fixtures and fittings or services and so cannot verify that they are in working order or fit for the purpose. References to the Tenure of a Property are based on information supplied by the seller. We have not had sight of the Title Documents. A buyer is advised to obtain verification from their solicitor or surveyor. Floorplans shown are for guidance only and should not be relied upon. Items shown in photographs are NOT included unless specifically mentioned within these details. They may however be able by separate negotiation. You are advised to check the availability of this property before travelling any distance to view. Particulars are produced in good faith to the best of our knowledge and are set out as a general guide only.