



ENLER VILLAGE

Newtownards Road

Comber

BT23 5ZW

HAGAN[®]

HAGAN  [®]
CREATING
HOMES
SINCE 1988

www.haganhomes.co.uk

*At Hagan Homes
we are not developers;
We are home builders.*



With over 35 years experience Hagan Homes prides itself on offering affordable, quality, stylish homes, so go ahead and make your new home a Hagan Home.

Step by Step Guide

Download our **Step by Step** guide to buying a Hagan Home from our website.
www.haganhomes.co.uk



Convenient living with everything on your doorstep

Unbeatable location with a number of primary and secondary schools all within a close distance.

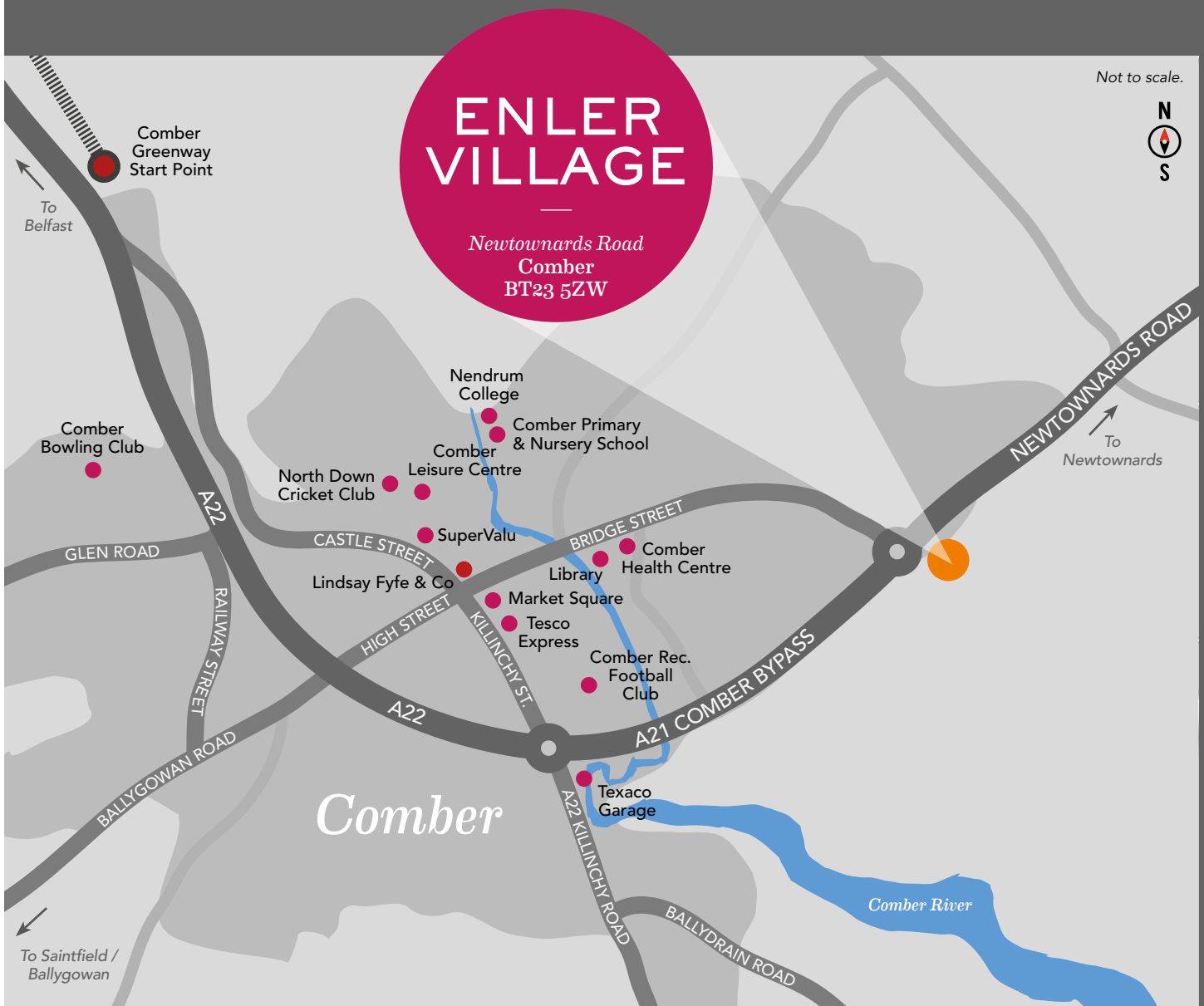
A brief 3 minute walk to the bus stop providing easy access to Comber town centre, Newtownards, Dundonald and beyond.

Easy reach distance to Comber Town with an array of nearby shops, local eateries and host to Comber Farmers Market.

A short 10 minute stroll to the nearest convenience store.

Located less than 4 miles away from areas of natural beauty such as the Castle Espie Wetland Centre and Scrabo Tower.

A short cycle distance away from the Comber Greenway a 7-mile traffic-free section of the National Cycle Network that runs along the old Belfast - Comber railway line.





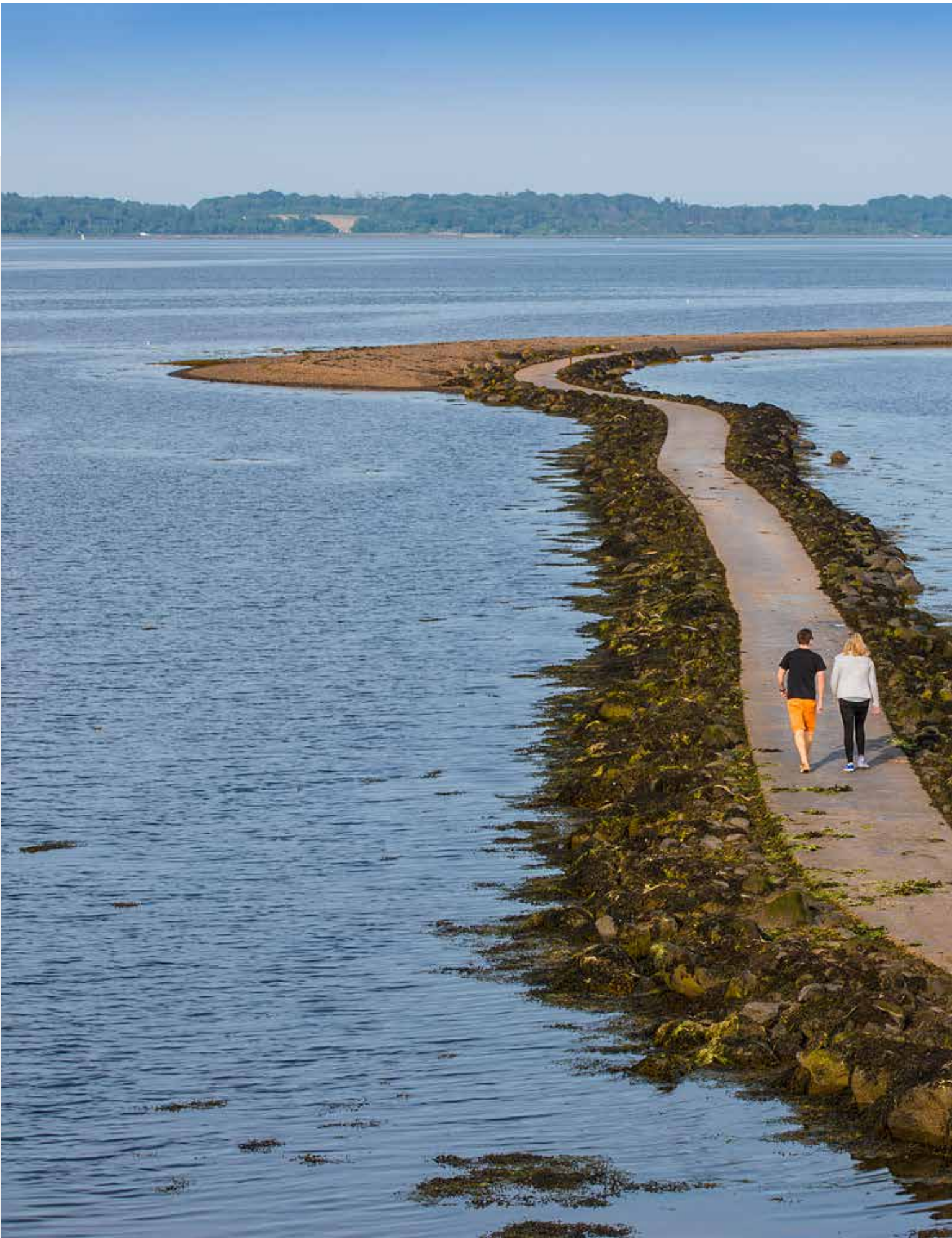
Scrabo Tower



Castle Espie Wetland Centre

All on your doorstep (Travel times by car)

Comber Leisure Centre	5 minutes
Tesco Express	4 minutes
Comber Rec. Football Club	3 minutes
SuperValu	5 minutes
Newtownards Town Centre	7 minutes
The Garage / Texaco Filling Station	4 minutes
Castle Espie	11 minutes
National Trust Mount Stewart	12 minutes
Poachers Pocket, Lisbane	10 minutes
Crafty Fox, Balloo	13 minutes
Daft Eddy's Bar & Restaurant	19 minutes
Newtownards	8 minutes
Ballygowan	11 minutes
Belfast City Centre	29 minutes
George Best Belfast City Airport	28 minutes
Belfast International Airport	55 minutes





Rough Island Walk, Strangford Lough



Strangford Lough



Mount Stewart



Comber Leisure Centre



The Square, Comber

Homes designed and built with you in mind

Steeped in history, Comber is renowned as the home of the designer of the Titanic, Thomas Andrews, was famous for its whiskey distillery, linen mills, war heroes and even as the birthplace of a Northern Irish Prime Minister. In the 1930's it was a venue for the famous TT motor race and today is a bustling modern town with a charming and friendly atmosphere.

Enler Village is located off the Newtownards Road, just minutes from Comber town centre and the abundance of amenities, facilities and activities available there. For such a small town Comber has a lot to offer its residents, and it embodies a truly inclusive community atmosphere.

A local park, leisure centre, Tesco Express, nursery, primary and secondary schools are all within close range of the development, and there is a selection of cafes, bistros and restaurants where you can enjoy some down time with friends and family.

Comber is also known for the beauty of its surrounding landscape. In addition to the stunning scenery and outdoor pursuits on offer at Strangford Lough, you can enjoy the beauty and nature at Castle Espie's Wetlands and Wildlife Trust.

The market town of Newtownards with its shopping centre and Tesco Extra is less than 4 miles away and a host of excellent grammar schools are served by designated bus services.

One of the area's biggest assets is the Comber Greenway, a seven-mile traffic free section of the National Cycle Network running from Comber to Belfast along an old railway line. The Greenway provides a tranquil green corridor along its course, with points of interest along the way including the CS Lewis Statue, views of the Harland & Wolff Cranes, Parliament Buildings at Stormont and the Belfast Hills. For those commuting by road, Comber has easy 'A' road access to both Belfast and Newtownards with bus links available to other destinations.

Scrabo Tower



Stand up paddleboarding, Strangford Lough



The Penrose
Site 464

The Sheraton
Site 463

The Penrose
Site 462



Enler Village strikes the perfect balance between convenience and comfort

The Hanover
Site 452

The Fenwick
Site 453

The Fenwick
Site 454

The Kilburn
Site 455

Computer Visual



Making your new house a home

Careful attention to detail has been given in every element of design and construction at Enler Village, giving these homes a distinct charm.

Internal



- Ember PS Smart Heating Control System - Control your heating system anywhere, anytime from the palm of your hand
- x1 USB double socket in kitchen and all bedrooms
- Extensive electrical specification to include pre-wire for BT and Sky+ with Ultrafast broadband speeds of 1000 Mps available



Kitchen

- A choice of quality kitchen doors, worktop colours & handles
- Contemporary underlighting to kitchen units
- Floor level mood lighting
- Appliances to include electric oven, hob and stainless steel & glass extractor hood



Images used are taken from previous Hagan show homes.

Making your new house a home

Bathroom & Ensuite



- Contemporary white sanitary ware
- Thermostatically controlled showers
- Ceramic floor and partial wall tiling fitted from a superior range



External

- External lighting to front and rear doors
- Extensive trees and landscaping across entire development
- All communal areas and amenity areas are to be maintained by management company



Luxury turnkey specification

Hagan Homes is renowned for its heritage of craftsmanship and reputation for carefully applying the best of modern building technology to every development. The result is a place that is rich in detail, with homes that are stylish, efficient and comfortable.

GENERAL FEATURES

- Gas central heating system with high efficiency boiler and thermostatically controlled radiators
- Internal doors: White panel doors with chrome handles
- Extensive electrical specification to include pre-wire for BT and Sky+ with Ultrafast broadband speeds of up to 1000 Mps available
- Internal walls, ceilings and woodwork painted in neutral colours
- Tiled hallway
- Carpets to lounge, stairs landing and bedrooms
- Ember PS Smart Heating Control System - Control your heating system anywhere, anytime from the palm of your hand, with this wifi ready thermostat (electronic sensors that communicate by radio signals to the boiler to provide the ideal room temperature) and it's free app, making it possible to add multiple users, boost, change schedules activate holiday mode and more

- x1 USB double socket in kitchen and all bedrooms
- Ethernet port in smaller bedroom
- Mains supply smoke, heat and carbon monoxide detectors
- uPVC windows
- 2 year defects liability period by Hagan Homes
- 10 year NHBC structural warranty

KITCHEN

- A choice of quality kitchen doors, worktop colours & handles
- Contemporary underlighting to kitchen units
- Floor level mood lighting
- Ceramic floor and partial wall tiling from superior range
- Appliances to include electric oven, hob and stainless steel / glass extractor hood
- Integrated fridge freezer
- Integrated washing machine (except The Adderley, The Allington & The Beatty which will have utility room with space for freestanding washing machine and tumble dryer)
- Integrated dishwasher

BATHROOM, ENSUITE & WC

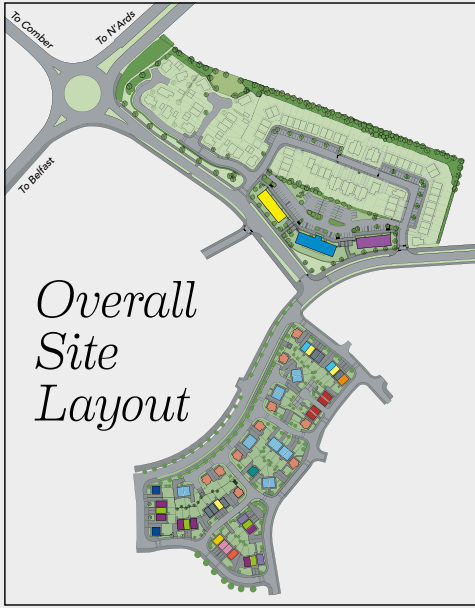
- Contemporary white sanitary ware
- Thermostatically controlled bath / shower mixer and screen
- Soft close toilet seat and cover
- Clicker waste system in wash hand basin
- Ensuite with thermostatic shower (where applicable)
- Ceramic floor and partial wall tiling fitted from a superior range
- Floor to ceiling tiled splashback in bathroom and ensuite
- Heated chrome towel rail in bathroom

EXTERNAL FEATURES

- External lighting to front and rear doors
- Outside water tap
- All front and back gardens to be grassed (where applicable)
- Decorative flagged path around house with bitmac parking area (where applicable)
- Extensive trees and landscaping across entire development
- All communal areas and amenity areas are to be maintained by a management company, management fee to be confirmed



Images used are taken from previous Hagan show homes.



Not to Scale



House Type Key

The Adderley 3 Bedroom Detached	The Hanover 3 Bedroom Townhouse
The Allington 3 Bedroom Detached	The Kilburn 3 Bedroom Townhouse
The Beatty 3 Bedroom Detached	The Latimer 3 Bedroom Townhouse
The Caldwell 3 Bedroom Semi-Detached	The Maple 3 Bedroom Townhouse
The Deane 3 Bedroom Semi-Detached	The Newton 3 Bedroom Townhouse
The Devonport 3 Bedroom Semi-Detached	The Onslow 3 Bedroom Townhouse
The Eames 3 Bedroom Townhouse	The Penrose 3 Bedroom Townhouse
The Fenwick 3 Bedroom Townhouse	The Sheraton 3 Bedroom Townhouse
The Gower 3 Bedroom Townhouse	

Site Layout



Please see separate brochure and specification for The Oakdale, Malmesbury & Walcott Apartments



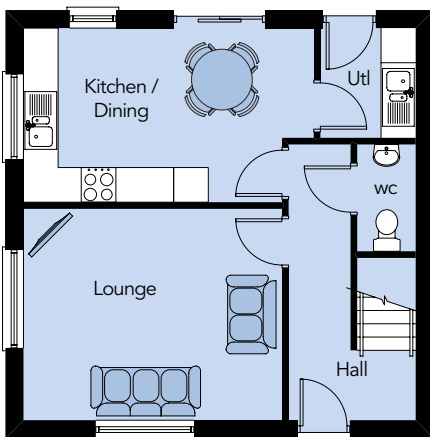
Computer Visual

The Adderley

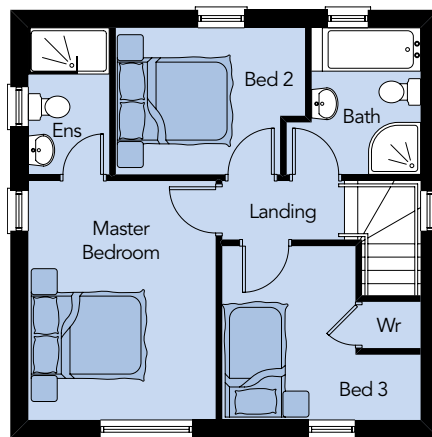
3 Bedroom Detached

Total Floor Area - 992 sq ft approx.

Note - Site 465 is a handed version of this type.



Ground Floor



First Floor

Ground Floor

ENTRANCE HALL

LOUNGE

14'8" x 12'0"

KITCHEN / DINING

16'6" x 9'11" max

UTILITY

6'3" x 5'5"

WC

6'1" x 3'4"

First Floor

MASTER BEDROOM

13'7" x 10'8"

ENSUITE

8'4" x 4'7"

BEDROOM 2

10'9" x 8'4" max

BEDROOM 3

11'3" x 9'11" max

BATHROOM

8'4" x 7'7" max



Computer Visual

The Allington

3 Bedroom Detached
Total Floor Area - 978 sq.ft approx.

Ground Floor

ENTRANCE HALL

LOUNGE
14'4" x 13'9"

KITCHEN / DINING
13'9" x 10'6"

UTILITY
7'4" x 5'6"

WC
7'4" x 3'3"

First Floor

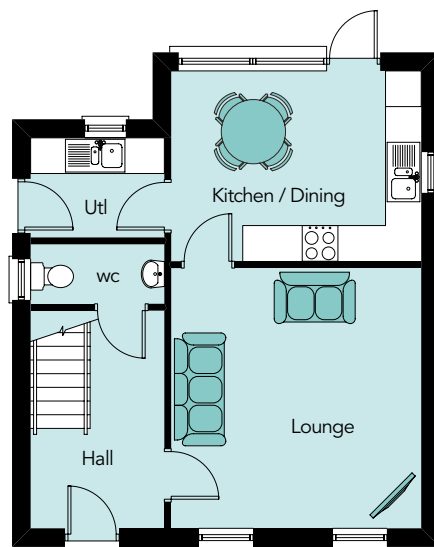
MASTER BEDROOM
13'2" x 11'6" max

ENSUITE
7'9" x 3'3"

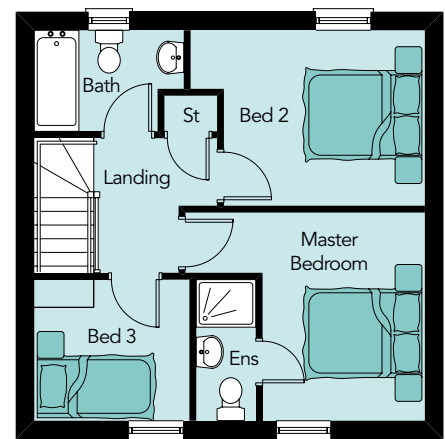
BEDROOM 2
12'11" x 9'8" max

BEDROOM 3
8'7" x 7'9"

BATHROOM
8'3" x 5'7" max



Ground Floor



First Floor



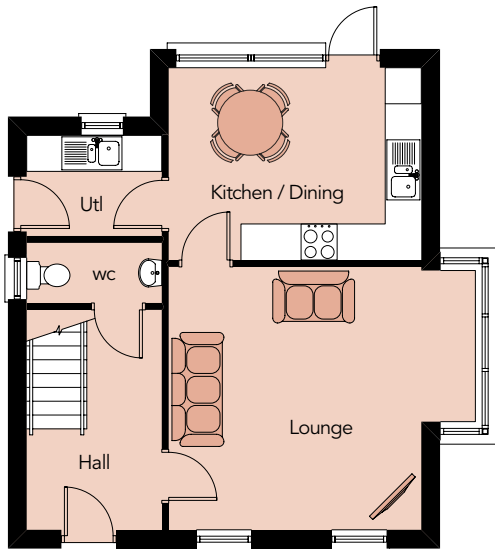
Computer Visual

The Beatty

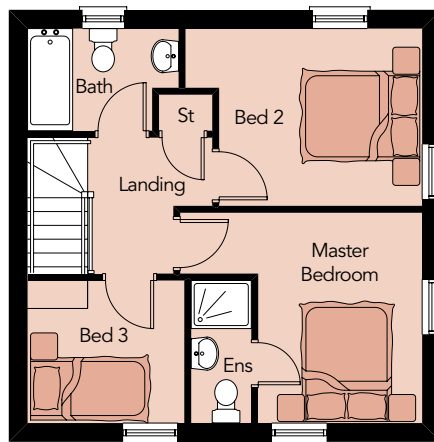
3 Bedroom Detached

Total Floor Area - 968 sq.ft approx.

Note - Sites 473, 481, 486, 491 & 497 are a handed version of this type.



Ground Floor



First Floor

Ground Floor

ENTRANCE HALL

LOUNGE

16'9" x 14'4" max

KITCHEN / DINING

13'9" x 10'6"

UTILITY

7'4" x 5'6"

WC

7'4" x 3'3"

First Floor

MASTER BEDROOM

13'2" x 11'6" max

ENSUITE

7'9" x 3'3"

BEDROOM 2

12'11" x 9'8" max

BEDROOM 3

8'7" x 7'9"

BATHROOM

8'3" x 5'7" max



Computer Visual

The Caldwell

3 Bedroom Semi-Detached
Total Floor Area - 947 sq.ft approx.

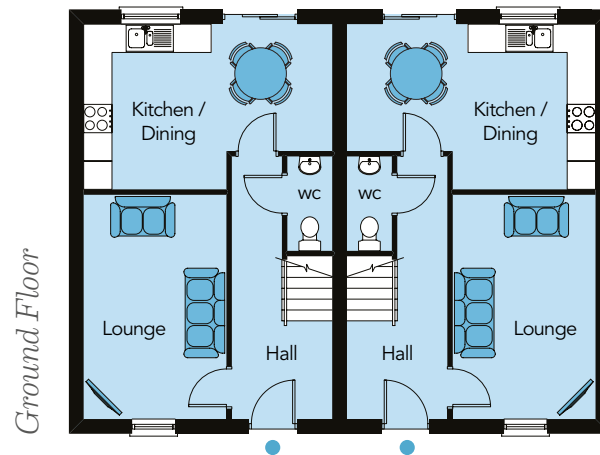
Ground Floor

ENTRANCE HALL

LOUNGE
15'7" x 9'11"

KITCHEN /
DINING
17'3" x 11'6" max

WC
6'7" x 3'1"



Ground Floor

First Floor

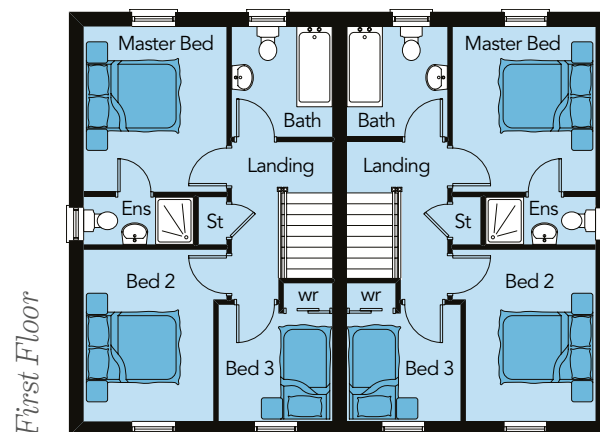
MASTER BEDROOM
11'6" x 9'11"

ENSUITE
7'7" x 3'3"

BEDROOM 2
11'11" x 9'11" max

BEDROOM 3
8'1" x 7'11" max

BATHROOM
7'8" x 7'0"



First Floor

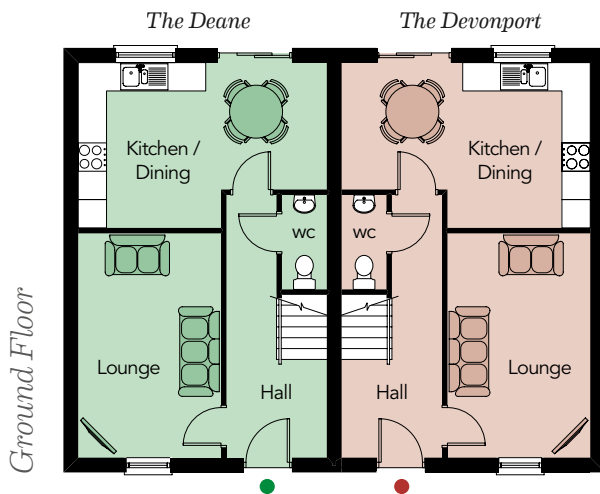


Computer Visual

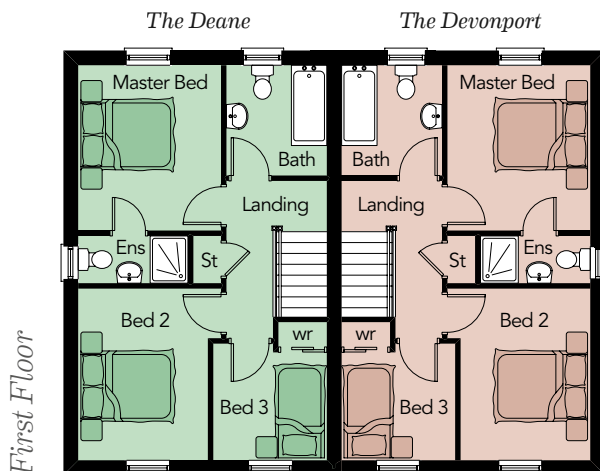
The Deane & The Devonport

3 Bedroom Semi-Detached

Total Floor Area - 947 sq.ft approx.



Note - Sites 498 & 499 are a handed version of this type.



Ground Floor

ENTRANCE HALL

LOUNGE
15'7" x 9'11"

KITCHEN / DINING
17'3" x 11'6" max

WC
6'7" x 3'1"

First Floor

MASTER BEDROOM
11'6" x 9'11"

ENSUITE
7'7" x 3'3"

BEDROOM 2
11'11" x 9'11" max

BEDROOM 3
8'1" x 7'11" max

BATHROOM
7'8" x 7'0"

The Eames, The Fenwick & The Gower

3 Bedroom Townhouses





Computer Visual

The Eames

Ground Floor

LOUNGE max	15'0" x 13'3"
KITCHEN / DINING max	17'1" x 11'4"
WC	5'3" x 3'5"

First Floor

MASTER BED	11'7" x 9'10"
ENSUITE	7'8" x 3'11"
BEDROOM 2	10'5" x 9'10"
BEDROOM 3 max	7'10" x 6'11"
BATHROOM	6'11" x 6'7"

Total Floor Area:
912 sq ft approx.

The Fenwick

Ground Floor

LOUNGE max	17'1" x 13'5"
KITCHEN / DINING	17'1" x 9'3"
WC	6'5" x 3'3"

First Floor

MASTER BED	13'5" x 11'3"
ENSUITE	8'8" x 3'3"
BEDROOM 2	14'3" x 9'3"
BEDROOM 3 max	9'10" x 9'9"
BATHROOM	6'10" x 5'7"

Total Floor Area:
1,029 sq ft approx.

The Gower

Ground Floor

LOUNGE	17'1" x 11'1"
KITCHEN / DINING	17'1" x 10'0"
WC	6'7" x 3'3"

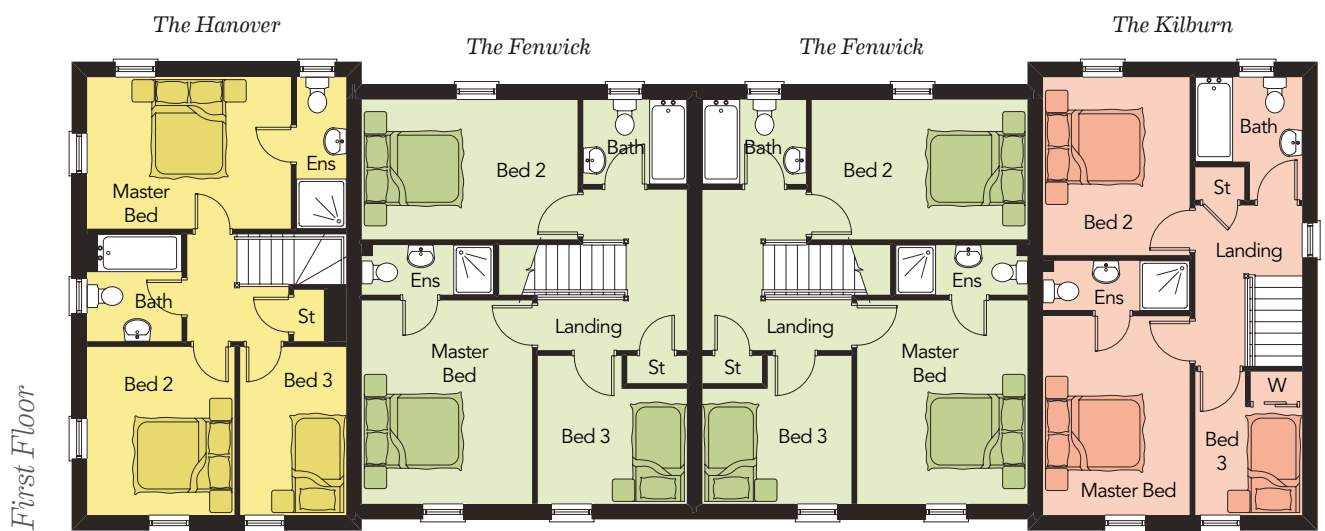
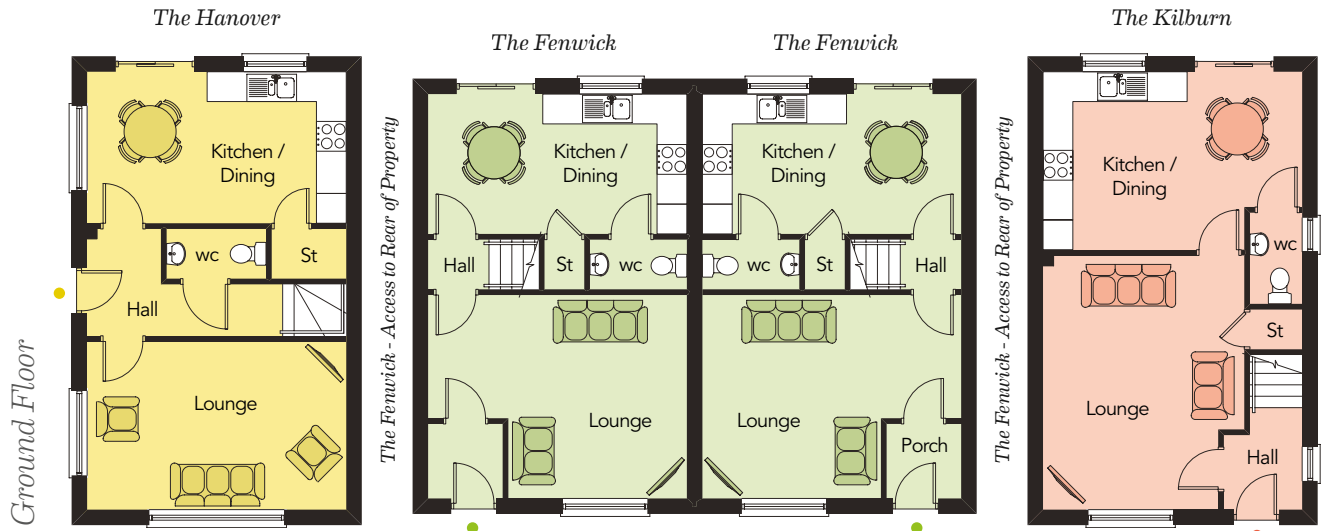
First Floor

MASTER BED	13'5" x 10'0"
ENSUITE	10'0" x 3'3"
BEDROOM 2	11'1" x 9'9"
BEDROOM 3	11'1" x 7'0"
BATHROOM	7'1" x 6'3"

Total Floor Area:
989 sq ft approx.

The Hanover, The Fenwick & The Kilburn

3 Bedroom Townhouses





Computer Visual

The Hanover

Ground Floor

LOUNGE	17'1" x 11'1"
KITCHEN / DINING	17'1" x 10'0"
WC	6'7" x 3'3"

First Floor

MASTER BED	13'5" x 10'0"
ENSUITE	10'0" x 3'3"
BEDROOM 2	11'1" x 9'9"
BEDROOM 3	11'1" x 7'0"
BATHROOM	7'1" x 6'3"

Total Floor Area:
989 sq ft approx.

The Fenwick

Ground Floor

LOUNGE max	17'1" x 13'5"
KITCHEN / DINING	17'1" x 9'3"
WC	6'5" x 3'3"

First Floor

MASTER BED	13'5" x 11'3"
ENSUITE	8'8" x 3'3"
BEDROOM 2	14'3" x 9'3"
BEDROOM 3 max	9'10" x 9'9"
BATHROOM	6'10" x 5'7"

Total Floor Area:
1,029 sq ft approx.

The Kilburn

Ground Floor

LOUNGE max	16'9" x 13'3"
KITCHEN / DINING max	17'1" x 11'9"
WC	6'0" x 3'5"

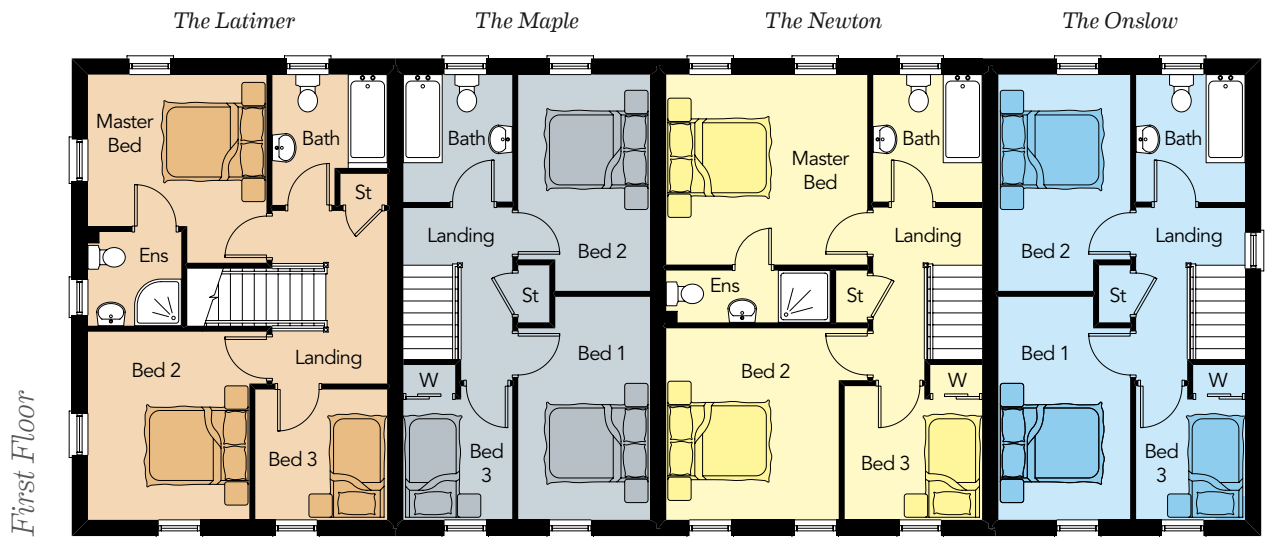
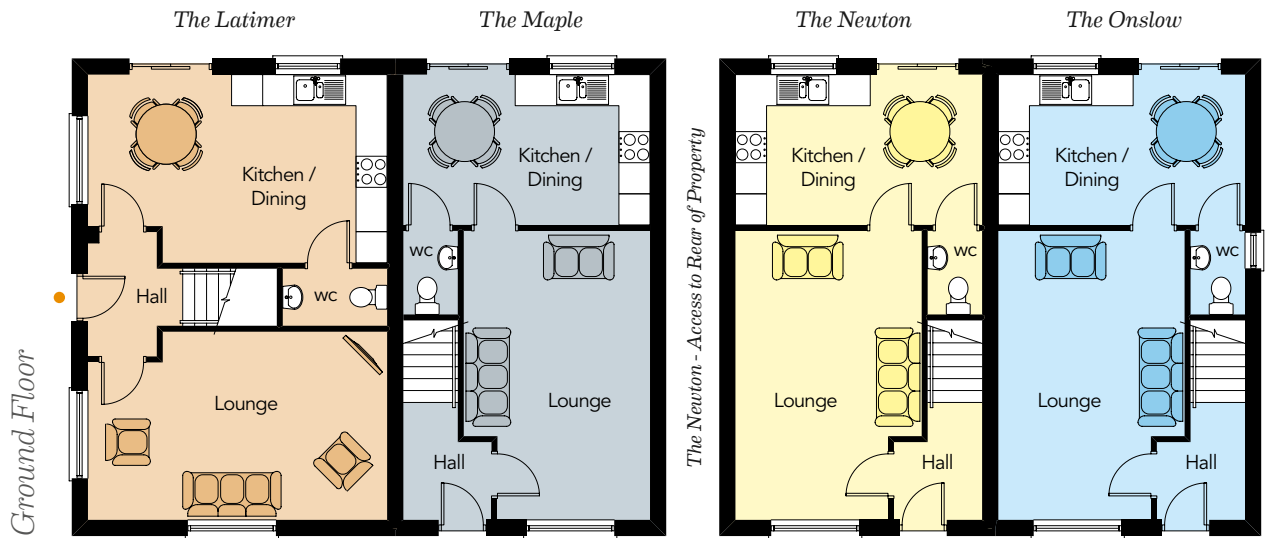
First Floor

MASTER BED	13'2" x 9'8"
ENSUITE	9'8" x 3'3"
BEDROOM 2	11'9" x 9'8"
BEDROOM 3 max	9'6" x 7'1"
BATHROOM max	8'1" x 7'1"

Total Floor Area:
989 sq ft approx.

The Latimer, The Maple, The Newton & The Onslow

3 Bedroom Townhouses





Computer Visual

The Latimer

Ground Floor

LOUNGE max 18'11" x 11'11"
KITCHEN / DINING max 18'11" x 11'11"
WC 6'7" x 3'7"

First Floor

MASTER BED max 11'11" x 11'4"
ENSUITE 5'11" x 5'11"
BED 2 max 11'11" x 11'4"
BED 3 8'4" x 8'3"
BATH max 8'3" x 7'3"

Total Floor Area:
 1,066 sq.ft approx.

The Maple

Ground Floor

LOUNGE max 18'3" x 11'9"
KITCHEN / DINING 15'7" x 9'6"
WC 5'3" x 3'5"

First Floor

BED 1 max 14'1" x 8'4"
BED 2 max 13'8" x 8'4"
BED 3 max 8'6" x 6'11"
BATHROOM 8'0" x 6'11"

Total Floor Area:
 879 sq.ft approx.

The Newton

Ground Floor

LOUNGE max 18'3" x 11'9"
KITCHEN / DINING 15'7" x 9'6"
WC 5'3" x 3'5"

First Floor

MASTER BED 12'9" x 12'0"
ENSUITE 10'4" x 3'3"
BED 2 max 12'9" x 12'1"
BED 3 max 8'8" x 8'6"
BATHROOM 8'0" x 6'11"

Total Floor Area:
 1,003 sq.ft approx.

The Onslow

Ground Floor

LOUNGE max 18'3" x 11'9"
KITCHEN / DINING 15'7" x 9'6"
WC 5'3" x 3'5"

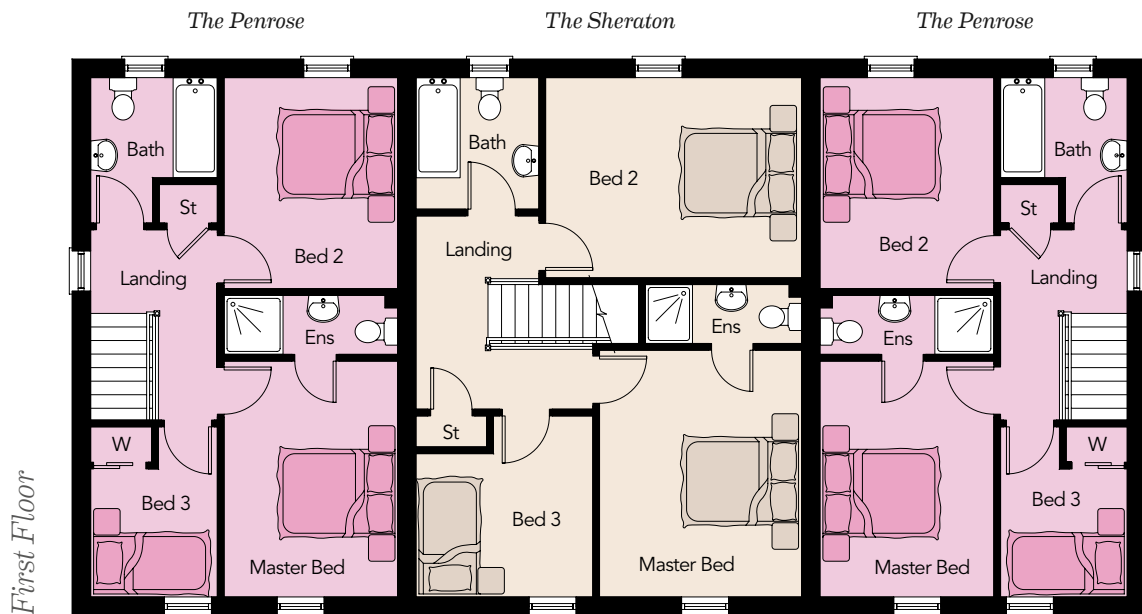
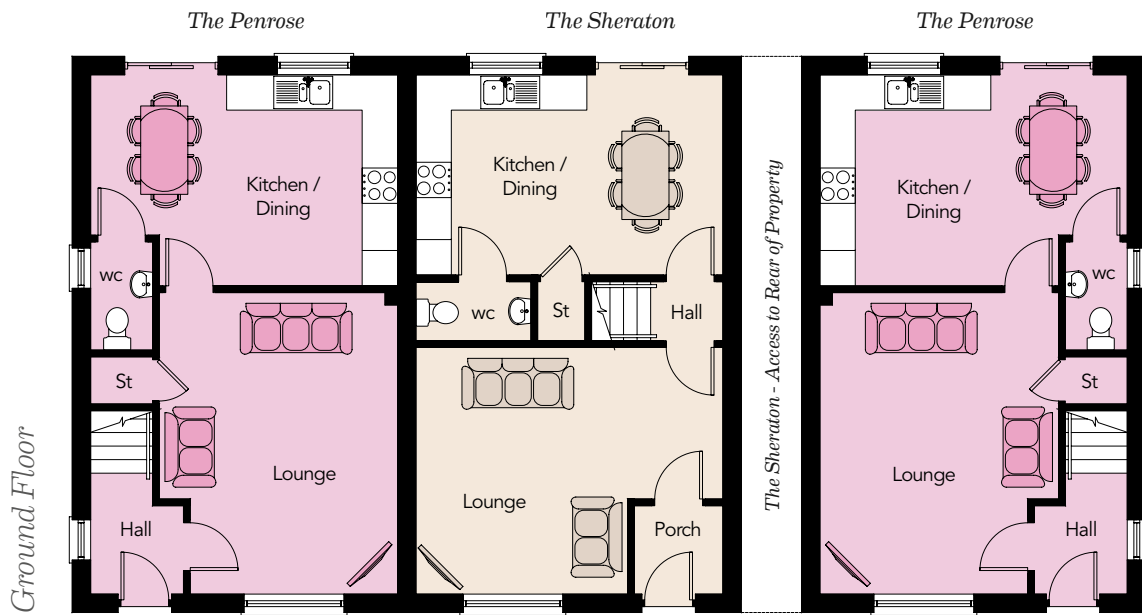
First Floor

BED 1 max 14'1" x 8'4"
BED 2 max 13'8" x 8'4"
BED 3 max 8'6" x 6'11"
BATHROOM 8'0" x 6'11"

Total Floor Area:
 879 sq.ft approx.

The Penrose & The Sheraton

3 Bedroom Townhouses





Computer Visual

The Penrose

Ground Floor

LOUNGE max	16'10" x 13'3"
KITCHEN / DINING max	17'1" x 11'9"
WC	6'0" x 3'5"

First Floor

MASTER BED	13'2" x 9'8"
ENSUITE	9'8" x 3'3"
BEDROOM 2	11'9" x 9'8"
BEDROOM 3 max	9'6" x 7'1"
BATHROOM max	8'1" x 7'1"

Total Floor Area:
988 sq.ft approx.

The Sheraton

Ground Floor

LOUNGE max	17'1" x 13'9"
KITCHEN / DINING	17'1" x 11'2"
WC	6'5" x 3'3"

First Floor

MASTER BED	13'9" x 11'3"
ENSUITE	8'8" x 3'3"
BEDROOM 2	14'3" x 11'2"
BEDROOM 3 max	10'1" x 9'10"
BATHROOM	7'4" x 6'10"

Total Floor Area:
1,114 sq.ft approx.

The Penrose

Ground Floor

LOUNGE max	16'10" x 13'3"
KITCHEN / DINING max	17'1" x 11'9"
WC	6'0" x 3'5"

First Floor

MASTER BED	13'2" x 9'8"
ENSUITE	9'8" x 3'3"
BEDROOM 2	11'9" x 9'8"
BEDROOM 3 max	9'6" x 7'1"
BATHROOM max	8'1" x 7'1"

Total Floor Area:
988 sq.ft approx.

Current Developments



SPRINGWATER
Ballyclare BT39



MULBERRY
Coleraine BT52 2EG

HAGAN®
**CREATING
HOMES**
SINCE 1988



FOXLEIGH MEADOW
Ballymoney BT53 6FE



WATER'S EDGE
Greenisland BT38 8TZ



SHIMNA MILE
Newcastle BT33 0TQ



**BALLANTINE
GARDEN VILLAGE**
Lisburn BT27 5FJ



**CARNCORMICK
MEADOW**
Cargan BT43 7JU



**LISNACASTLE
GARDENS**
Castlecaulfield BT70 3FJ

Multi Award Winning Home Builders

Belfast Telegraph
Mixed-Use
Development of the Year
Award Winner 2023

Belfast Telegraph
Property Marketing
Award Winner 2022 & 2018
Highly Commended - 2023

Belfast Telegraph
Developer of the Year 2023 -
Highly Commended

Belfast Telegraph
Residential Development
of the Year 2022 -
Highly Commended

PropertyPal Awards
Development Company
of the Year
Award Winner 2022
Highly Commended - 2023

PropertyPal Awards
Best Property Marketing
Award Winner
2023 & 2022

PropertyPal Awards
Community CSR (Corporate
Social Responsibility)
Award Winner 2022
Highly Commended - 2023

AIB Business Eye
Community (CSR)
Award Winner 2022 & 2021

AIB Business Eye
Business Awards 2018
Highly Commended

FSB Small Business
Community Award Winner
2023 & 2020

CEF
Private Housing Development
Award Winner 2008, 2012,
2014 & 2015

Sunday Express
National House Builder Award

Daily Express
British National
House Builder Award

Daily Telegraph
What House?
Award Winner



**CONSUMER
CODE FOR
HOME BUILDERS**

www.consumercode.co.uk

NHBC

CEF CONSTRUCTION
EMPLOYERS
FEDERATION

In compliance with Consumer Protection from Unfair Trading and Business Protection from Misleading Marketing Regulations, please note that any visual or pictorial representations as featured in this brochure such as 3D computer generated images are purely intended as a guide for illustrative, concept purposes only and often may be subject to change. Any floor plans and site layouts used are not to scale and all dimensions are approximate and subject to change. Also note the brochure does not feature exact location or presence of specific or detailed items such as street lighting, sub stations or full finishes etc.

All specific details to your chosen plot or immediate boundaries etc. should be checked with the agent, developer, or your legal advisor prior to purchase.

Copyright notice: All rights reserved. The contents of this brochure may not be reproduced, copied, redistributed, or otherwise made available in whole or part without the prior written consent from the developer.

JOINT SELLING AGENTS




40 The Square, Comber
Telephone 028 9187 1212
www.johnminnis.co.uk

Michael
Chandler
ESTATE AGENTS

236 Ormeau Road, Belfast
Telephone 028 90 450 550
www.michael-chandler.co.uk

HAGAN[®]**H**

CREATING
HOMES
SINCE 1988

 @HaganHomes
www.haganhomes.co.uk