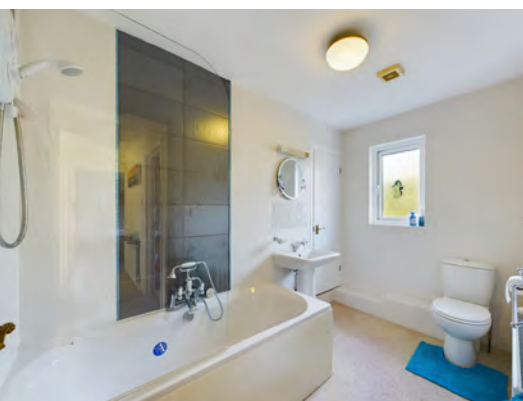




# 9 Crandford Close Bridestowe EX20 4HB



**Guide Price - £475,000**





# 9 Crandford Close, Bridestowe, EX20 4HB.

A Detached Family Home Nestled In A Charming Village Location, Boasting Four Bedrooms, A Private Two-Tiered Garden, Ample Parking With Carport, Garage, And Convenient Access To Local Amenities..



- Four-Bedroom Detached Family Home
- Popular Village Location
- Walking Distance To School, Pub, Shop
- Spacious Living Room With Wood Burner
- Large Entrance Hall/Dining Area
- Master Bedroom With En-Suite Balcony
- Three Additional Double Bedrooms
- Parking For Multiple Vehicles, Carport
- Private Two-Tiered Garden
- Flexible, Family-Friendly Layout
- Convenient Utility Area
- Council Tax Band - E
- EPC - TBC



If you're seeking a spacious and versatile family home in a desirable village setting, this four-bedroom detached property could be exactly what you've been searching for. Situated within walking distance of the village school, a local pub, and a convenient shop/Post Office, it offers the perfect blend of comfort, charm, and practicality.

Set on a completely private plot, the property benefits from a large two-tiered garden, creating the ideal space for outdoor living, with a large patio on the upper level opening directly from the large conservatory. As well as a large lower tier previously used from vegetable plots and fruit trees, that is bordered by the Crandford Brook.

Whether you envision hosting gatherings, gardening, or simply relaxing in peace, this garden offers endless possibilities. The outdoor space is further complemented by ample parking for multiple vehicles, a carport which is home to the home's log store as well as an integral single garage, and easy access from the front to the rear of the property.

Stepping inside, a spacious dining hall way welcomes you with its light-filled and flexible layout. This spacious setting which sets the tone for the home's practical and family-friendly design. The heart of the home is the generously sized living room, featuring a focal point wood burner. This inviting space is perfect for cosy evenings with the family or entertaining guests. The property also has a down stairs WC.

The kitchen is well-proportioned and functional, with plenty of storage and workspace for those who love to spend time cooking. It's further enhanced by a practical utility room, ideal for managing laundry or additional storage needs. Together, these spaces provide everything a busy family might need to streamline day-to-day life.

Upstairs, the home continues to impress with three double bedrooms which includes the master and a further single bedroom/study, ensuring there's plenty of room for family or guests. The standout master bedroom includes its own en-suite shower room and a private south-facing balcony, a perfect retreat to enjoy your morning coffee or take in the peaceful surroundings. The other bedrooms are equally well-proportioned, making them ideal for children & guests.

This charming home is nestled in a sought-after village location, offering a strong sense of community while still providing privacy and convenience. With a large living space, a flexible layout, and a private garden to enjoy, this property perfectly balances functional family living with the opportunity to make it your own.





# Changing Lifestyles

Bridestowe is a charming village located on the edge of Dartmoor National Park in Devon. This peaceful location offers easy access to stunning countryside views, making it a perfect spot for those who enjoy outdoor activities such as walking, cycling, and exploring nature. The village itself is small but well-equipped with local amenities, including a friendly pub and a convenience store.

The surrounding area offers plenty of attractions, with nearby towns like Tavistock and Launceston providing additional services and recreational opportunities. For history enthusiasts, Dartmoor's vast landscapes are home to ancient sites and wildlife, while the proximity to Okehampton also adds to the convenience, with more extensive facilities available just a short drive away.

Ideal for those looking to enjoy a rural lifestyle with excellent access to outdoor adventures and nearby towns, Bridestowe combines the best of village living with the beauty of Dartmoor's natural surroundings.



Please do not hesitate to contact  
the team at  
Bond Oxborough Phillips  
Sales & Lettings on  
**01837 500600**  
for more information or to  
arrange an accompanied viewing  
on this property.

Scan here for  
our Virtual Tour:







**Floor 0**

**Approximate total area<sup>(1)</sup>**

1866.15 ft<sup>2</sup>

173.37 m<sup>2</sup>



**Floor 1**

**Balconies and terraces**

70.72 ft<sup>2</sup>

6.57 m<sup>2</sup>

## Have a property to sell or let?

If you are considering selling or letting your home, get in contact with us today on 01837 500600 to speak with one of our expert team who will be able to provide you with a free valuation of your home.

We have the facility to refer purchasers and vendors to conveyancing, mortgage advisors and Surveyors. It is your decision if you choose to deal with any of these companies however should you choose to use them we would receive a referral fee from them for recommending you. We will receive a referral fee between £50 - £300 depending on the company & individual circumstances. We have carefully selected these associates for the quality of their work and customer service levels.

Consumer Protection Regulations: We have not tested any apparatus, equipment, fixtures and fittings or services and so cannot verify that they are in working order or fit for the purpose. References to the Tenure of a Property are based on information supplied by the seller. We have not had sight of the Title Documents. A buyer is advised to obtain verification from their solicitor or surveyor. Floorplans shown are for guidance only and should not be relied upon. Items shown in photographs are NOT included unless specifically mentioned within these details. They may however be able by separate negotiation. You are advised to check the availability of this property before travelling any distance to view. Particulars are produced in good faith to the best of our knowledge and are set out as a general guide only.

### PLEASE NOTE:

Before any sale is formally agreed, we have a legal obligation under the Money Laundering regulations and Terrorist Financing Act 2017 to obtain proof of your identity and of your address, take copies and retain on file for five years and will only be used for this purpose. We carry out this through a secure platform to protect your data. Each purchaser will be required to pay £29.99 upon an offer verbally being agreed to carry out these checks prior to the property being advertised as sale agreed.