



Occupying a quiet cul-de-sac position off the ever popular Bryansburn Road, this excellent detached home is situated within walking distance of Bangor's town centre, Bangor Marina for the yachting enthusiast and many delightful coastal walks. With the highest specification and attention to detail, this house will appeal to those looking for the perfect home in an idyllic location.

Internally the property is designed with a contemporary theme. Of particular note is the spacious lounge with feature fireplace, dining room, kitchen open plan to casual living area which has access to the garden and three bedrooms one on the ground floor and bathroom facilities on both floors. Externally the property offers landscaped gardens in lawn, shrubs, patio areas etc.

Homes in this locality rarely present themselves to the open market, therefore early perusal is strongly advised.

Offers Around
£395,000

10 Bryansburn Gardens,
BANGOR,
BT20 3SF

Viewing by
appointment
through agent
028 9042 4747

- Attractive Detached Villa
- Well Presented Throughout
- Lounge with Feature Fireplace, Dining Room
- Kitchen open plan to Casual Living Room - direct access to the garden
- Utility Room/ Ground Floor Cloaks
- Ground Floor Bedroom with Ensuite Shower Room
- Two First Floor Bedrooms, Master with Ensuite Bathroom
- Further Family Bathroom
- Double Glazed Windows/ Gas heating (underfloor heating to ground floor)
- Detached Garage with additional parking
- Electric Sliding Gates to Courtyard Style Garden in paving, lawn etc
- Superb Bangor West Location



The Property Comprises:

Ground Floor

Front door leading to . . .

ENCLOSED TILED ENTRANCE PORCH: Inner door to . . .

ENTRANCE HALL: Solid cherry flooring, display shelving, storage understairs, floor to ceiling windows overlooking the garden.

CLOAKROOM: Low flush wc, pedestal wash hand basin, ceramic tiled floor, extractor fan, low voltage spotlights.

HOTPRESS: Built-in Megaflow pressurised water system.

LOUNGE: 17' 10" x 13' 7" (5.44m x 4.14m) Hole in the wall fireplace, double sided fireplace with dog grate, solid cherry flooring, low voltage spotlights.



DINING ROOM: 17' 10" x 14' 8" (5.44m x 4.47m) Hole in the wall, double sided fireplace with dog grate, low voltage spotlights, solid cherry floor, table and 8 chairs.



KITCHEN/LIVING: 21' 2" x 17' 10" (6.45m x 5.44m) Maple kitchen with excellent range of high and low level units, laminate work surfaces, 1.5 bowl stainless steel sink unit with mixer tap, integrated dishwasher, five ring gas hob, stainless steel splash back, double oven, larder cupboard, integrated fridge freezer, low voltage spotlights, centre island, built-in breakfast bar, maple fireplace, granite inset and hearth, open fire, laminate wood effect floor, part tiled walls, sliding doors to outside.



UTILITY ROOM: 12' 9" x 4' 10" (3.89m x 1.47m)
Stainless steel sink unit with mixer tap, plumbed for washing machine, space for tumble dryer, ceramic tiled floor, low voltage spotlights.

BEDROOM (3): 13' 0" x 10' 5" (3.96m x 3.18m)
Laminate wood effect floor, low voltage spotlights, built-in cupboard.

ENSUITE SHOWER ROOM: Wash hand basin, separate fully tiled shower cubicle.



First Floor

LANDING: Built-in cupboard.



MASTER BEDROOM: 19' 0" x 13' 4" (5.79m x 4.06m) Low voltage spotlights, storage in eaves.



BEDROOM (2): 13' 7" x 13' 4" (4.14m x 4.06m) Built-in cupboards.



BATHROOM: White suite comprising bath with mixer tap and telephone hand shower, low flush wc, wash hand basin, Velux window, tile effect flooring.



BATHROOM (2): Bath with telephone hand shower, bidet, low flush wc, wash hand basin, storage in eaves, Velux windows, extractor fan, low voltage spotlights.

Outside

Electric sliding gates to enclosed courtyard. Pebbled parking area leading to . . .

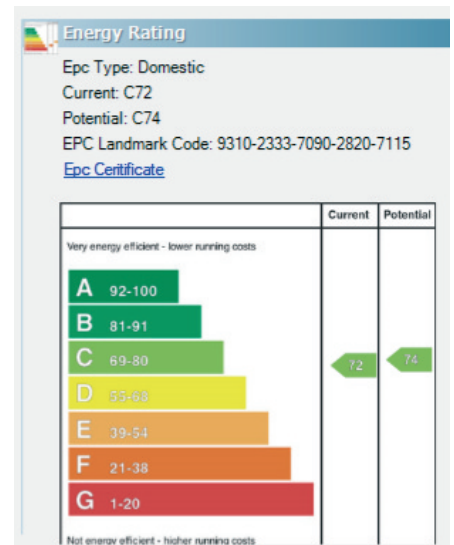
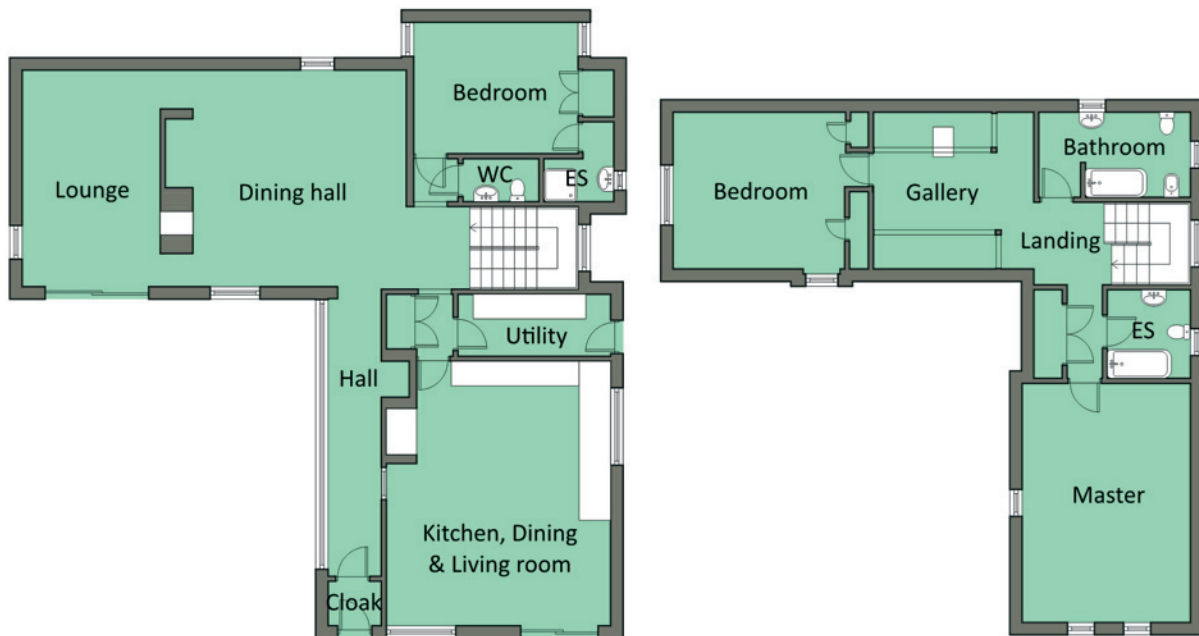
GARAGE: 22' 4" x 17' 8" (6.81m x 5.38m) Roller shutter door, light and power.

Garden laid in lawn, paved patio area, bin storage to side, outside tap, further brick paved patio, gas boiler.



Location:

Travelling into Bangor on the Bryansburn Road, continue past Maxol Filling Station on the right hand side. Go straight over at large roundabout (at end of Maxwell Road) and entrance to Bryansburn Gardens is on the left hand side before Farnham Road.



These particulars do not constitute any part of an offer or contract. None of the statements contained in these particulars are to be relied on as statements or representations of fact and intending purchasers must satisfy themselves by inspection or otherwise to the correctness of each of the statements contained in these particulars. The Vendor does not make or give, neither Templeton Robinson, nor any person in its employment has any authority to make or give, any representation or warranty whatever in relation to this property. All dimensions are taken to nearest 3 inches.