



43 A EAST LINK

Hollywood, BT18 9PQ

Offers around **£85,000**



GROUND FLOOR APARTMENT | 1  | 1  | 1 

This well presented apartment is ideally situated within a few minutes walking distance of Holywood's town centre and provides ease of access to Belfast city centre and the George Best Belfast City Airport via transport bus links.

KEY FEATURES

- Ground Floor Apartment
- Chain Free Sale
- Lounge With Gas Coal Effect Fire
- Fitted Kitchen With Access To Rear Courtyard
- Well-Proportioned Bedroom With Built In Robe
- Shower Room
- Gas Fired Central Heating
- Enclosed Courtyard
- Off Street Parking Laid In Brick Paviours
- Convenient Sought After Location
- Ideal Purchase For The First Time Buyer, Young Professional Or Investor Alike
- Ultrafast Broadband Available



ROOM DETAILS

Ground Floor

- Entrance Hall
- Reception Hall
- Lounge
12'6" x 12'4"
- Kitchen
12'6" x 8'0"

Ground Floor

- Bedroom One
15'6" x 9'3"
- Shower Room

Outside

- Brick Store
- Driveway Parking

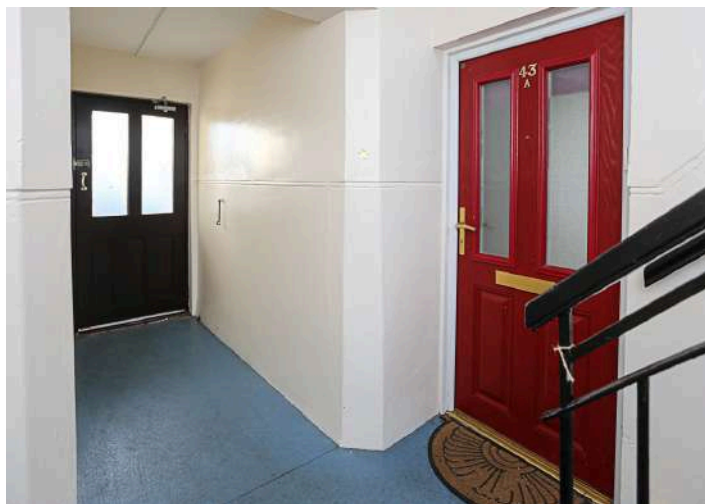


To View Floor Plans
scan QR code below



DIRECTIONS

Travelling from the Maypole in Holywood along the High Street, in the direction of Belfast, turn left into Abbey Road after Sullivan Upper School and take the first right along Abbey Ring. East Link is located on the third street on your left hand side.



THE LOCAL AREA

Holywood, named Best Place to Live in Northern Ireland 2023 by the Sunday Times, is located conveniently close to Belfast on the coast of North Down. Holywood is known for its beautiful beaches, trendy cafés and for being a foodie heaven! Holywood is home to many leading secondary and primary schools.



ENERGY EFFICIENCY RATING		
	CURRENT	POTENTIAL
92+ A		
81-91 B		
69-80 C		
55-68 D	68	73
39-54 E		
21-38 F		
1-20 G		
<i>NOT energy efficient - higher running costs</i>		

Scan QR Code to view floor plans and to arrange a viewing.



OUR BRANCHES

B' FAST (028) 9065 3333 H'WOOD (028) 9042 8888 BANGOR (028) 9131 3833 D'DEE (028) 9188 8881 COMBER (028) 9187 1212

property@johnminnis.co.uk

JOHNMINNIS.CO.UK     

