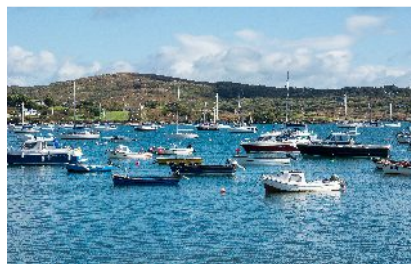


# The Anchorage

Colla Road Schull, County Cork, Ireland



Unique coastal property situated  
amid the dramatic landscape of  
west Cork with stunning sea views  
and foreshore access



House is on .75 hectares (1.85 acres) - BER rating D2

# The Anchorage

Colla Road Schull, County Cork, Ireland

## An ideal location

SCHULL is a village on the Wild Atlantic Way, known for its vibrant community, wonderful shops, cafes, Carbery's Hundred Isles and an easier pace of life. An escape from the stresses of busy city life and a sanctuary where one can relax, breathe the fresh air and enjoy all that is West Cork.

Home to Calves Week - named with a tongue in cheek reference to the famous yachting event, Cowes Week! An annual August event with fierce rivalry between local and visiting fleets. The harbour a wonderful sight with yachts at full sail.

The Fastnet Film Festival is another high-profile summer event where short films are screened in various venues around the village, some travelling to the fringes of Long Island and Cape Clear.

The streets are thronged with young film makers, film lovers and famous faces – some who have made the area their second home. Undeniably, a diverse community made up of local and international families. An area of outstanding beauty with an abundance of locally produced artisan foods, stunning beaches, biking and walking trails.

The Anchorage presents a rare opportunity to acquire a classic period style residence where it is all about 'location, location, location'!! This exclusive coastal home offers stunning sea views, a generous garden, privacy and character, all within a short distance of Schull village, West Cork.

## Steeped in History

The Anchorage, as it is known today, is as rich in its history as it is in its charm. Previously called Fastnet View, as it appears on the 1898 Ordnance survey map of Schull Harbour, was owned by the O'Keeffe family and remained within that same family for one hundred and forty years. This is undoubtedly an imposing residence, home to raising generations of the O'Keeffe's, a centre of business discussions, family celebrations and a wonderful vantage point of the comings and goings of Schull Harbour.

The current vendors were originally drawn to the property due to its proximity to the sea, nature, fabulous walks and Schull village itself. On the other hand, when sophistication calls or that special occasion arises, top class venues and Michelin star restaurants are all just a short drive away.

Blairs Cove House, Durrus, Restaurant Chestnut, Ballydehob and Restaurant Dede in Baltimore to name a few. The Anchorage has wonderful harbour views, mature gardens and trees frame and compliment the property. There are lawned areas on various levels enjoying views over the property and out to sea, also sheltered seating areas. Another unique feature is direct access to the foreshore.

## The Home

Inside the home a grand entrance hall leads on one side to the original part of the building with traditional features such as sash windows and shutters. The reception rooms benefit from high ceilings and open fireplaces. The formal sitting room also benefits from access to the outdoors via a door on the west wall. Onwards to a generous light filled study with a large east facing window. Behind the study is a utility and WC area leading on further to a storage area and large workshop. On the other side of the entrance hall is the newer addition, a light filled modern extension with a large open plan kitchen and dining area, again with access to the front and rear garden.

Upstairs are five bedrooms and three bathrooms, providing plenty of accommodation for guests away from the privacy of the master suite. The master has dual aspect windows overlooking the gardens, generous proportions, an ensuite and private dressing area. There is currently full planning permission granted for the modernisation and extension of the home. The vendors engaged the services of renowned architects Lawrence and Long in Dublin known for their imaginative, design focused, conservation accredited, elegant design solutions. They have delivered an exciting vision for the future of The Anchorage.

The main house will be reconfigured to provide accommodation and generous living spaces. There will be a new link between the existing house to a brand-new wing comprising of a kitchen and dining space. The orientation of this new space focuses directly out to sea, capturing magnificent views of the harbour and Castle Island. Outdoor modifications consist of new parking areas, a new outdoor dining space, courtyards and a glazed covered winter garden. This is a unique opportunity to own an incredible coastal home in one of West Corks most desirable locations.

# The Anchorage

Colla Road Schull, County Cork, Ireland



[www.theanchorschull.com](http://www.theanchorschull.com)

[www.theanchorschull.com](http://www.theanchorschull.com)

# The Anchorage

Colla Road Schull, County Cork, Ireland



# The Anchorage

Colla Road Schull, County Cork, Ireland



# The Anchorage

Colla Road Schull, County Cork, Ireland



# The Anchorage

Colla Road Schull, County Cork, Ireland



# The Anchorage

Colla Road Schull, County Cork, Ireland





# The Anchorage

Colla Road Schull, County Cork, Ireland



# The Anchorage

Colla Road Schull, County Cork, Ireland



# The Anchorage

Colla Road Schull, County Cork, Ireland



## Local Amenities

Looking for a place that has it all? Look no further than our local! From sailing and swimming to fishing and country markets, there's something for everyone here.

With a wide range of artisan shops, including bookshops, jewelry stores, crafts, and fashion boutiques, you'll never run out of things to explore.

Our traditional bars offer great entertainment and food, while our restaurants range from casual to fine dining, with even a Michelin-starred option in the area. And don't forget about our medical center, tennis courts, art gallery, and local festivals, including a film festival.

Come see for yourself why our local area is the perfect place to call home!

## Some of the amenities include:

- Sailing
- Swimmin
- Fishing
- Country Markets
- Wide range of artesian shops including bookshop, jewellery , crafts, fashion and
- Traditional bars with entertainment and food
- Restaurants including fine dinning Michelin star in the area
- Medical Centre
- Tennis Courts
- Art Gallery
- Local festivals incl film festival

# The Anchorage

Colla Road Schull, County Cork, Ireland

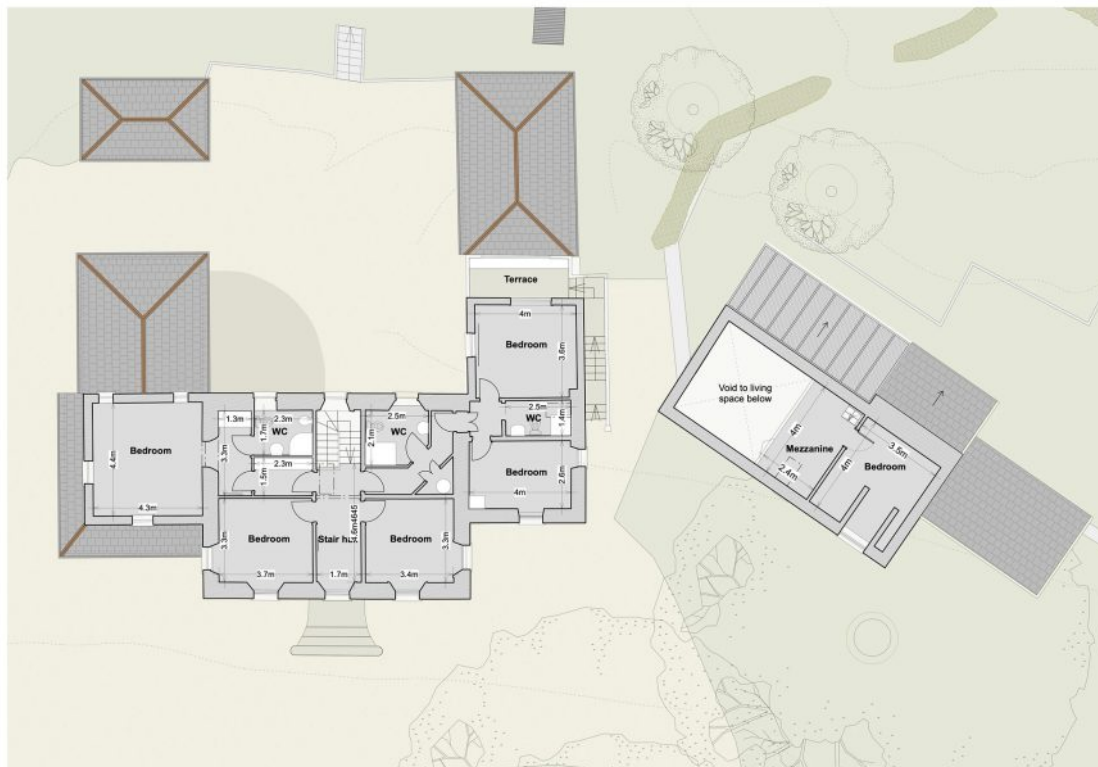
## Ground Floor



The Following documents are available on request

- Building Survey
- Measured drawings
- Full planning permission for 5 bedrooms, 4 bathrooms and new extension accommodating kitchen, dining and ancillary rooms.
- Planning ref 23754 designed by one of Ireland's leading architects Lawrence and Long
- Full set of architectural and engineering drawings
- Bill of quantities

## First Floor



# The Anchorage

Colla Road Schull, County Cork, Ireland

