



12 Woodville Elms, Craigavon, BT66 6SX
Offers over £189,950



4



3



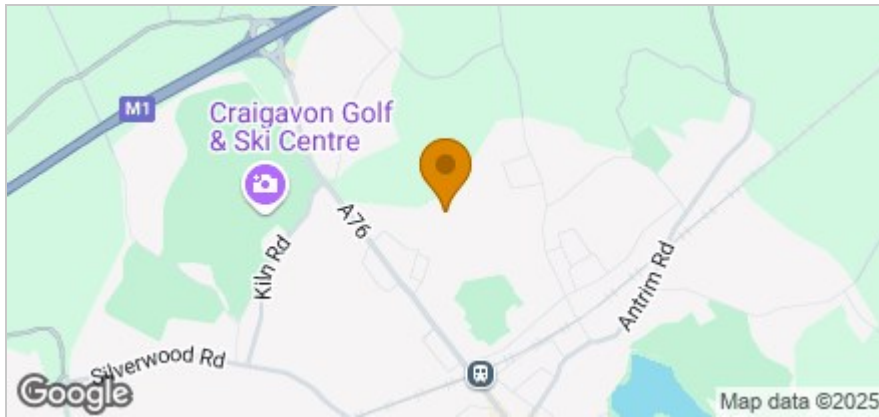
1

MARC FEGAN
BUSINESS ESTATE AGENTS

Floor Plan



Area Map



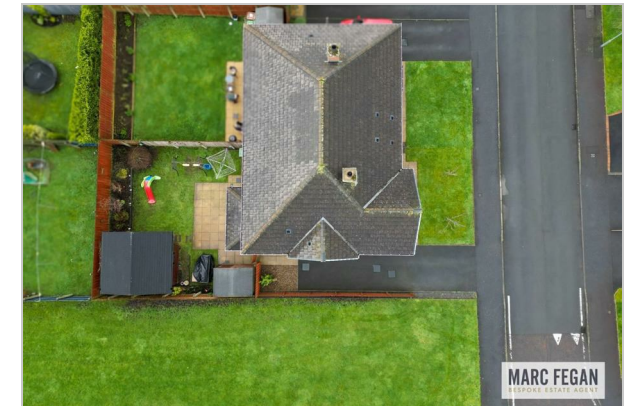
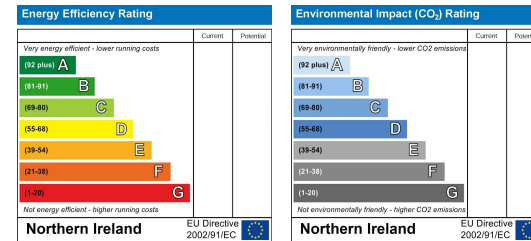
Accommodation

- Absolutely Immaculate Semi-Detached Home
- Flexible Accommodation - Three Plus Study or Four Bedroom Option
- Amazing Decor & Presentation Throughout
- Lounge With Feature Wood Burning Stove
- Luxury Fitted Kitchen With Spacious Dining Area
- Enclosed Rear Garden With Powered Garden Room As Optional Extra
- Sought After Area
- Spacious Accommodation Inside & Out
- Gas Heating & Double Glazed Windows
- Large Family Bathroom, Master En-Suite & Downstairs WC

Viewing

Please contact our Marc Fegan Bespoke Estate Agency Office on 02838894608 if you wish to arrange a viewing appointment for this property or require further information.

Energy Efficiency Graph



These particulars, whilst believed to be accurate are set out as a general outline only for guidance and do not constitute any part of an offer or contract. Intending purchasers should not rely on them as statements of representation of fact, but must satisfy themselves by inspection or otherwise as to their accuracy. No person in this firm's employment has the authority to make or give any representation or warranty in respect of the property.