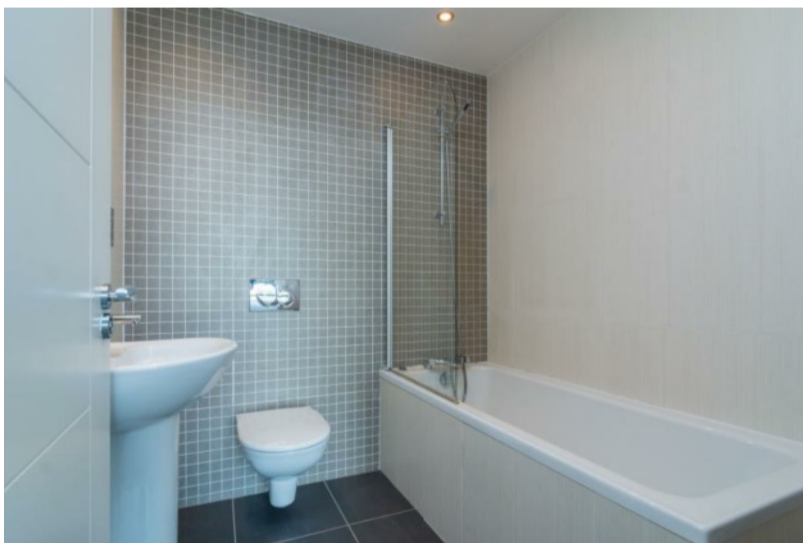
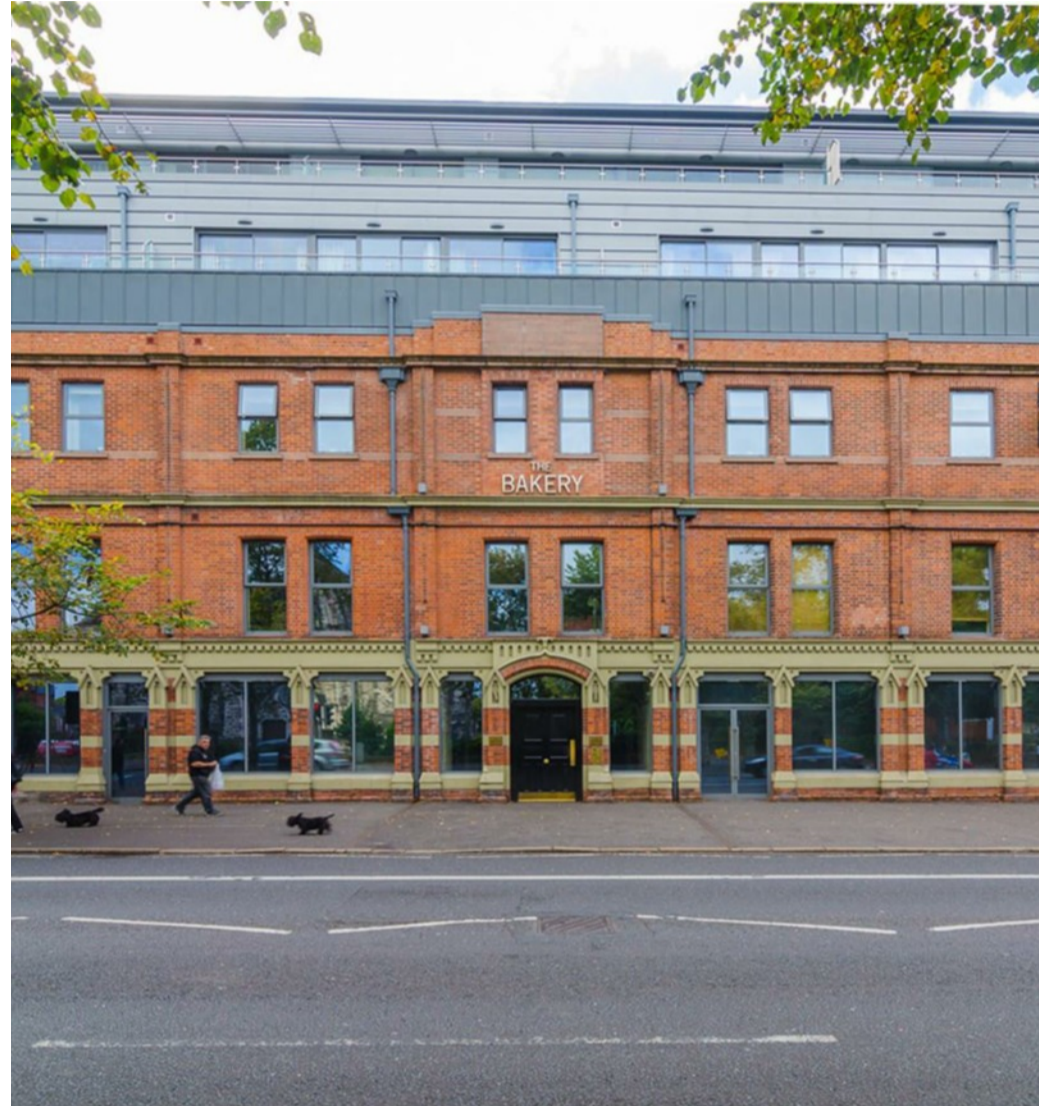


Location:

From Sunnyside Street turn left onto Ormeau Road, The Bakery is number 311 Ormeau Road on the left hand side before the bridge.



Beautifully presented second floor apartment in iconic 'The Bakery' development. This spacious apartment is available to rent immediately and comprises; good sized lounge with dining area, modern fitted kitchen, good double bedroom, cloakroom/wc and modern bathroom. Excellent level of specification and available end Feb 2024.

Price includes rates and secure car parking space.

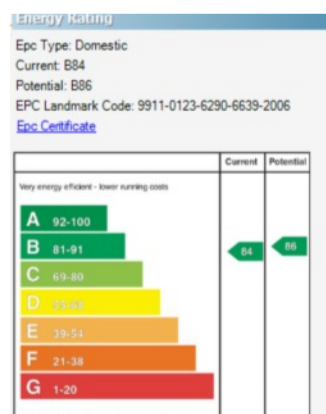
**Monthly Rent**  
**£1,095**

225 The Bakery,  
311 Ormeau Road,  
Belfast,  
BT7 3GA

Viewing by  
appointment with  
& through agent  
028 9066 3030

Viewing by appointment with & through agent 028 9066 3030

Lisburn Road - 028 90 66 3030  
Ballyhackamore - 028 90 65 0000  
North Down - 028 90 42 4747  
Lisburn - 028 92 66 1700  
www.templetonrobinson.com



These particulars do not constitute any part of an offer or contract. None of the statements contained in these particulars are to be relied on as statements or representations of fact and intending purchasers must satisfy themselves by inspection or otherwise to the correctness of each of the statements contained in these particulars. The Vendor does not make or give, neither Templeton Robinson, nor any person in its employment has any authority to make or give, any representation or warranty whatever in relation to this property. All dimensions are taken to nearest 3 inches.



# Property Features

Beautifully Presented Second Floor One Bedroom Apartment with Communal Garden Outlook

Bright, Spacious and Modern

Spacious Hall with Cloakroom/wc and Cupboard

Good Sized Lounge Open Plan to Dining Room

Modern Fitted Kitchen with Range of Integrated Appliances

Excellent Double Bedroom with Ensuite Bathroom

Secure Allocated Car Parking Space

Walking Distance of Many Local Amenities off the Ormeau Road and a Short Drive to the City Centre

