



6 Craiglunds Drive, Newtownabbey, BT36 5FQ

£750 Per Month



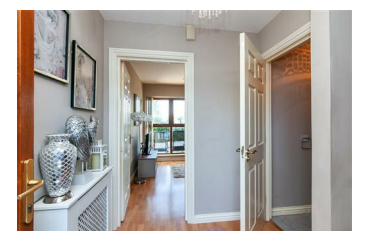
Well presented, two bedroom, town house with communal gardens and parking area, conveniently located within a small mews style development off the Ballyclare Road, Newtownabbey.

The property comprises entrance hall, furnished cloakroom, lounge with French patio doors leading to communal gardens, modern fitted kitchen through dining room, two well proportioned first floor bedrooms, and deluxe bathroom with white three piece suite.

Externally the property enjoys communal gardens and parking area.

Other attributes include gas fired central heating, PVC double glazing and convenient location.

Early viewing highly recommended to avoid disappointment.



INVESTORS IN PEOPLE
We invest in people Gold

PRS Property Redress Scheme

Proudly sponsoring



WE ARE MACMILLAN
CANCER SUPPORT

Awards

