

160 Barnett's Road  
Belfast  
BT5 7BE

LONGSTAND

### Entrance Hallway

13'0" x 3'5"

Timber effect flooring and recessed lighting.

### Living/Dining Room

20'3" x 9'4"

Bright, dual aspect space with timber effect flooring, recessed lighting, wood burning stove with exposed brick chimney breast and understair storage.

### Kitchen

12'8" x 6'10"

Tiled flooring with part tiled walls and recessed lighting. Fully fitted shaker style kitchen with integrated oven, four ring electric hob, washing machine and dishwasher. Plumbed for American fridge freezer and access to rear patio.

### 1st Floor - Landing

Carpeted flooring and access by slingsby ladder to floored attic.

### Attic

12'11" x 9'10"

Floored with lighting. Maximum height 1.93m and width measured between purlins.

### Bedroom 1

12'7" x 9'1"

Double bedroom with carpeted flooring.

### Bedroom 2

10'6" x 7'4"

Double bedroom with carpeted flooring.

### Bathroom

8'9" x 6'10"

Laminate flooring, part tiled walls and white three piece suite including bath with shower fitting, wash hand basin and WC. Mirrored cabinet above sink and storage cupboard housing Worcester gas-fired combi boiler.

### Outside

Front Garden - Private space enclosed with privet hedging, sunny south facing aspect laid in lawn and paving.

Rear Garden- Patio laid in paving accessible from kitchen, side of property and shared laneway.



2



1



1



D

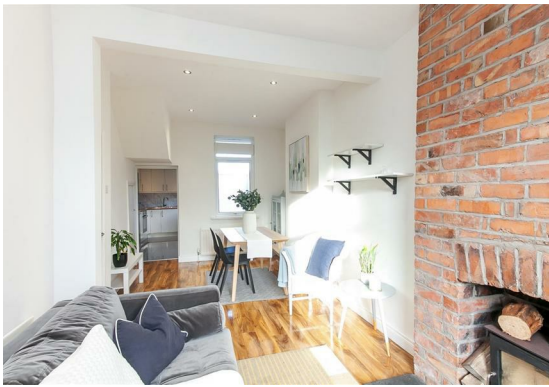
## Guide price £190,000

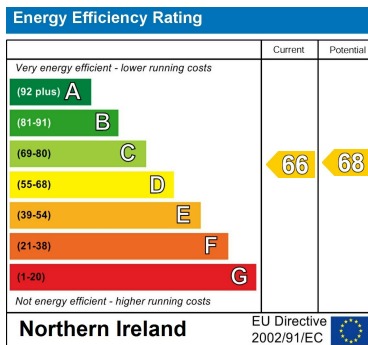
Longstand Property presents 160 Barnett's Road, a Victorian, red-brick, end-of-terrace home presented in walk-in condition. The property, built in c.1900, is one of a row of homes known as Stormount Terrace, and is within minutes' walk of the Newtownards Road, Stormont Estate and Comber Greenway. Features of the property include a sunny, south facing front garden, wood burning stove with exposed brick chimney breast, gas-fired central heating and side access.

The accommodation comprises entrance hall leading to the living/dining space with wood burning stove and modern kitchen with access to the rear patio. Upstairs, there are two double bedrooms, bathroom and access to the attic via slingsby ladder. Outside, the private front garden is laid in lawn and paving with privet hedging surrounding. The rear patio is accessible from the kitchen, the side of the property and shared laneway for the homes in the terrace.

More about the location...

Located on Barnett's Road in East Belfast, the property has an abundance of amenities within the vicinity. The shops at Summerhill Avenue are within a 5 minute walk as is Stormont Estate. Eateries in the area include General Merchants, Haptik, Cultura and The Poet. The Comber Greenway is located at the Kings Road end of Barnetts Road and the nearby Newtownards Road provides main bus routes and easy access to Belfast city centre.





DIRECTIONS

CONTACT

14 Barnett's Road  
 Belfast  
 Antrim  
 BT5 7BA

E: [info@longstandproperty.com](mailto:info@longstandproperty.com)

T: 7732808952

[longstandproperty.com](http://longstandproperty.com)

LONGSTAND