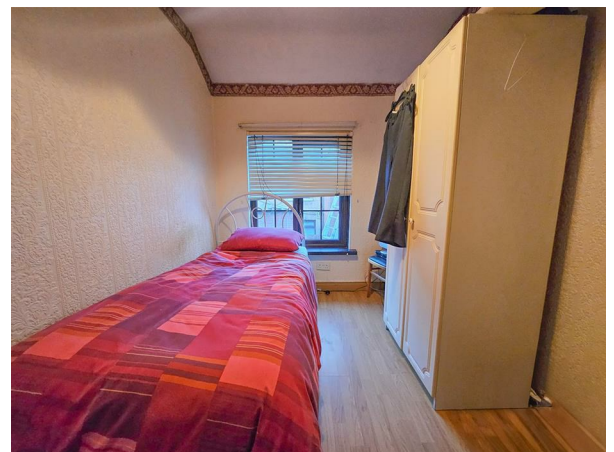


## 22 Strathroy Park, Belfast, BT14 7LP



- Extended Mid Terrace
- 2 Well Proportioned Bedrooms
- 1 Reception
- Shaker Style Fitted Kitchen with Casual Dining Aspect
- Ground Floor WC
- First Floor Shower Room
- Well Maintained Hard Landscape Garden to Front
- PVC Double Glazed
- Oil Fired Central Heating
- Popular Convenient Residential Location

**PRICE Offers Over £84,950**

*Located just off the Crumlin Road in North Belfast this extended 2 Bedroom Mid Terrace home is within close proximity to a range of local amenities including shops and schools. The property enjoys; hallway into a spacious living room, a shaker style fitted kitchen and informal dining aspect, two well proportioned bedrooms and an adapted shower room. Ideal for first time buyers and investors alike. An early viewing is highly recommended.*

**>Sales >New Homes >Commercial >Rentals >Mortgages**

Antrim  
12 Church Street  
BT41 4BA  
Tel: (028) 9446 6777

Ballyclare  
51 Main Street  
BT39 9AA  
Tel: (028) 9334 0726

Glengormley  
9A Ballyclare Road  
BT36 5EU  
Tel: (028) 9083 0803

## ACCOMMODATION

### GROUND FLOOR

PVC double glazed front door with leaded glass insets into entrance hall with tiled floor.

### LOUNGE 14'1" x 10'5" (at max)

Quality laminate flooring. Bay window.

### KITCHEN AND INFORMAL DINING 13'1" x 6'10"

Equipped with a comprehensive range of high and low level shaker style fitted units and contrasting work surfaces. Single drainer stainless steel sink unit with monobloc tap. Space for free standing cooker. Plumbed for washing machine. Space for tumble dryer. Part tiled walls. PVC wall panelling. PVC panelled ceiling.

### REAR PORCH

Tiled floor. PVC double glazed door to rear.

### GROUND FLOOR W.C.

Comprising pedestal wash hand basin and low flush WC. Tiled floor. PVC panelled walls.

### FIRST FLOOR

Access to roof space.

### BEDROOM 1 10'5" x 8'10"

Quality laminate flooring. Built in storage cupboard/wardrobe.

### BEDROOM 2 9'10" x 6'10"

Quality laminate flooring.


### SHOWER ROOM SUITE

Comprising adapted shower cubicle with thermostatically controlled shower unit, vanity unit with monobloc taps and a button flush WC. tiled walls. PVC ceiling.

### OUTSIDE

Well maintained hard landscape garden to front accessed via twin gates.

Rear courtyard with access to communal alleyway for bin access.

Energy Efficiency Rating		
	Current	Potential
<i>Very energy efficient - lower running costs</i>		
(92 plus) <b>A</b>		
(81-91) <b>B</b>		
(69-80) <b>C</b>		
(55-68) <b>D</b>		
(39-54) <b>E</b>		
(21-38) <b>F</b>		
(1-20) <b>G</b>		
<i>Not energy efficient - higher running costs</i>		
<b>Northern Ireland</b>	EU Directive 2002/91/EC	

**IMPORTANT NOTE TO ALL PURCHASERS: We have not tested any of the systems or appliances at this property.**



Country Estates (N.I.) Ltd. for themselves and the Vendors of this property whose agents are, give notice that:

These particulars do not constitute any part of an offer or contract

All statements contained in these particulars as to this property are made without responsibility on the part of Country Estates (N.I.) Ltd. or the vendor

None of the statements contained in these particulars as to this property are to be relied on as statements or representations of fact

Any intending purchaser must satisfy himself or otherwise as to the correctness of the statement contained in these particulars

The vendor does not make or give, and neither Country Estates (N.I.) Ltd. nor any person in their employment, has any authority to make or give representation or warranty whatever in relation to this property.