

Tim Martin
.co.uk



**Apartment 7 Ambleside
Saintfield
BT24 7DT**

**Offers Around
£179,950**

www.timmartin.co.uk
Telephone 028 91 878956

SUMMARY

A beautifully presented first floor apartment situated in this exclusive contemporary development, set on a pleasing elevated position overlooking Saintfield village.

This superb apartment provides a most impressive layout to suit a wide range of purchasers including the first time buyer, young professionals or those purchasers looking to downsize with ease of maintenance and convenience in mind. The accommodation is well appointed throughout comprising of a spacious lounge, contemporary fitted kitchen with an excellent range of integrated appliances, stunning bathroom suite and two excellent sized bedrooms with the principle bedroom enjoying an ensuite shower room.

The property is fitted with gas central heating, double glazing, and an excellent energy rating of C77 to help lower running costs. Outside, the purchaser can enjoy communal gardens and designated parking.

Saintfield village boasts an excellent choice of local boutiques, coffee shops, restaurants and schools and remains convenient to Downpatrick, Belfast and Lisburn which are all easily accessible by both car and public transport.

FEATURES

- Beautifully Presented First Floor Apartment In This Exclusive Development
- Spacious Lounge With Views Over Saintfield Village
- Contemporary Fitted Kitchen With Integrated Appliances
- Two Excellent Sized Bedrooms Including Principle Bedroom Ensuite
- Bathroom Fitted With A Stunning White Suite
- Gas Central Heating, Double Glazing And C77 Energy Rating
- Communal Gardens And Designated Parking
- Within Walking Distance To Saintfield Village, Public Transport And Amenities
- Convenient Commute To Belfast, Lisburn And Downpatrick

Communal Entrance Hall

Leading to first floor.

Entrance Hall

Wood laminate floor; recessed spot lighting; access to roofspace; telephone entry system.

Lounge

20'4 x 12'9 (6.20m x 3.89m)

Wood laminate floor; recessed spot lighting; tv and telephone connection points; stunning views over Saintfield Village; open through to:-

Kitchen

12'2 x 11'11 (3.71m x 3.63m)

Excellent range of modern wood laminate high and low level cupboards and drawers incorporating Leisure 1½ tub stainless steel sink unit with mono mixer tap; integrated Belling electric oven; 4 ring ceramic hob; extractor hood with curved glass inset over; Belling microwave; Candy dishwasher; Zanussi washing machine; Beko fridge/freezer; formica worktops; tiled splash backs; tiled floor; recessed spot lighting; Vokera gas fired boiler.

Principal Bedroom

12'2 x 12'2 (3.71m x 3.71m)

Wood laminate floor; tv aerial connection point.

Dressing Area

7'10 x 7'6 (2.39m x 2.29m)

Wood laminate floor.

En Suite Shower Room

8'7 x 7'5 (2.62m x 2.26m)

Modern white suite comprising, separate shower cubicle with Redring Xpressions electric shower unit with wall mounted telephone shower attachment; fitted sliding shower door; close coupled wc; pedestal wash hand basin with mono mixer tap; tiled floor; recessed spot lighting; towel radiator.

Bedroom 2

12'5 x 12'0 (3.78m x 3.66m)

Wood laminate floor.

Bathroom

12'2 x 8'0 maximum measurements (3.71m x 2.44m maximum measurements)

Stunning white suite comprising, free-standing roll top bath with pillar mixer taps; separate shower cubicle with thermostatically controlled shower unit and wall mounted telephone shower attachment; fitted folding shower door; close coupled wc; pedestal wash hand basin with mono mixer tap; recessed spot lighting; tiled floor; towel radiator; built-in storage cupboard.

Outside

Communal gardens and designated parking.

Capital Rateable Value

£115,000. Rates Payable = £1062.95 per annum (approximately)

Management Charge

£860 Per Annum (approximately)

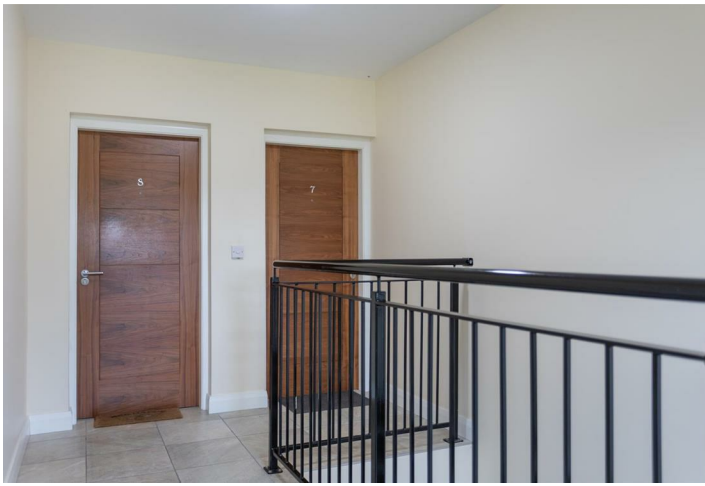
Covers buildings insurance and maintenance of common areas.

First Floor Apartment

Approx. 100.4 sq. metres (1080.2 sq. feet)

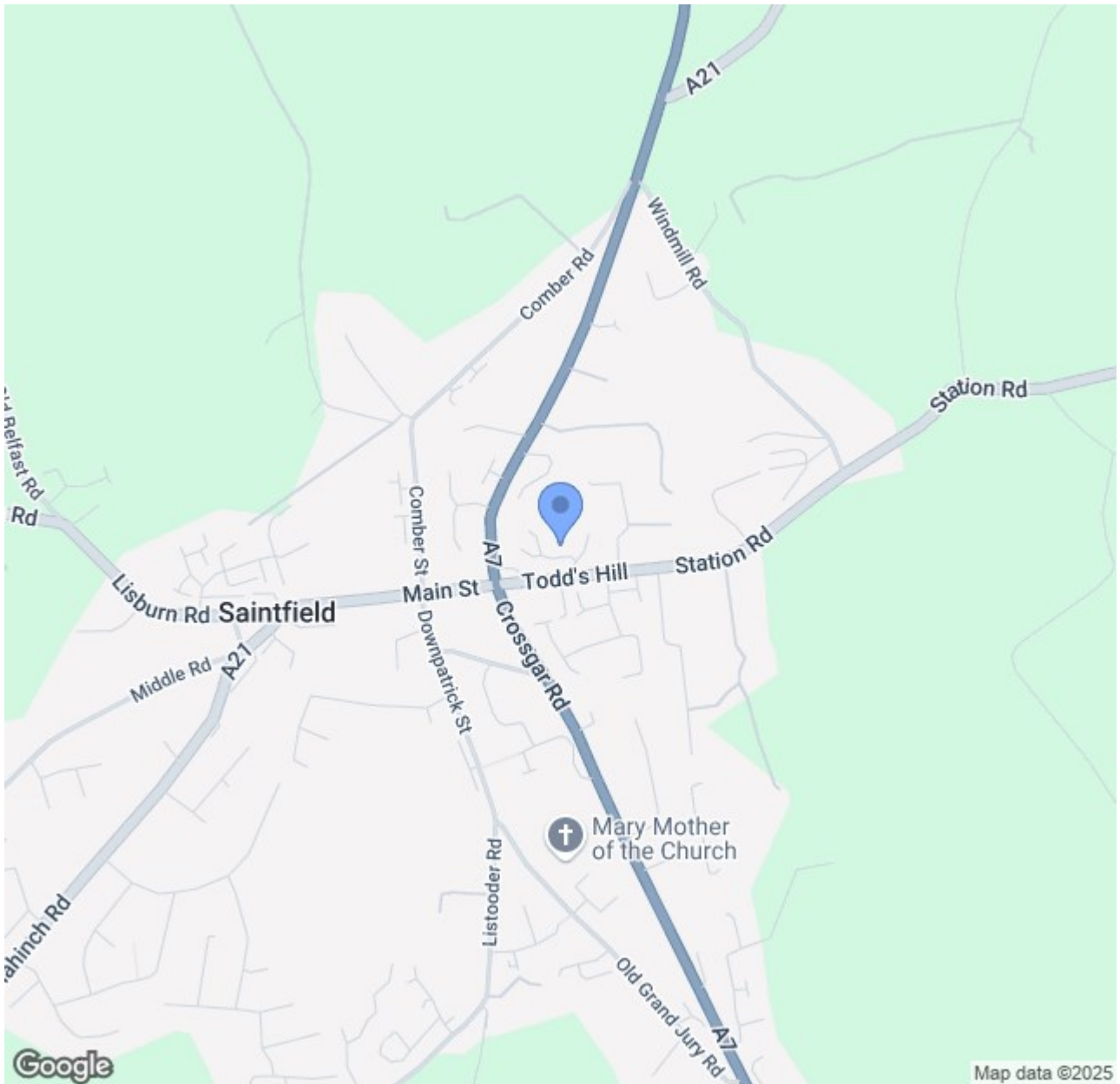


Total area: approx. 100.4 sq. metres (1080.2 sq. feet)









Energy Efficiency Rating		
	Current	Potential
Very energy efficient - lower running costs		
(92 plus) A		
(81-91) B	77	77
(69-80) C		
(55-68) D		
(39-54) E		
(21-38) F		
(1-20) G		
Not energy efficient - higher running costs		

Saintfield
 1B Main Street, Saintfield, BT24 7AA
 T 028 97 568300

Comber
 27 Castle Street, Comber, BT23 5DY
 T 028 91 8789596

Tim Martin & Company for themselves and for the vendors of this property have endeavoured to prepare these sales details as accurate and reliable as possible for the guidance of intending purchasers or lessees. These particulars are given for general guidance only and do not constitute any part of an offer or contract. The seller and us as agents, do not make any representation or give any warranty in relation to the property. We would recommend that all information contained in this brochure about the property be verified by yourself or professional advisors. Services, fittings and equipment referred to in the sales details have not been tested (unless otherwise stated) and no warranty will be given as to their condition. All measurements contained within this brochure are approximate. Please contact us prior to viewing the property. If there is any point of particular importance to you we would be pleased to provide additional information or make further enquiries. We will also confirm that the property remains available. This is particularly important if you are contemplating travelling some distance to view the property.