

114 Raceview, Muckamore, Antrim, BT41 4QB



PRICE Offers Over £109,950

This is an excellent opportunity for those looking for a wonderfully renovated and extended, two bedroom former mill workers house in the sought after Raceview area of Muckamore just off the Seven Mile Straight and within easy access of the main Belfast Road on the outskirts of Antrim town yet close to most amenities and transport facilities.

Renovated to an exceptionally high standard, this beautifully presented property benefits from an open plan living room with 'Inglenook' multi-fuel stove fireplace and staircase to the first floor. The former kitchen to the rear has been replaced with a dining room and kitchen extension beyond boasting a recently installed range of Grey coloured 'Shaker' kitchen units and a range of integrated appliances. Upstairs there are two bedrooms, with the main bedroom benefiting from a view over the Six Mile Water together with a fully modernised bathroom to the rear with white suite. Together with PVC double glazed windows and external doors and gas-fired central heating this property provides an excellent opportunity for the first time buyer and downsizer alike looking for an easy to maintain and very comfortable home in a historic part of Muckamore.

Early viewing strongly recommended.

>Sales >New Homes >Commercial >Rentals >Mortgages

Antrim
12 Church Street
BT41 4BA
Tel: (028) 9446 6777

Ballyclare
51 Main Street
BT39 9AA
Tel: (028) 9334 0726

Glengormley
9A Ballyclare Road
BT36 5EU
Tel: (028) 9083 0803



FEATURES

- PVC entrance door to;
- Open plan living room with feature 'Inglenook' multifuel stove and staircase to first floor
- Seperate dining room / Door too;
- Recently installed kitchen with grey 'Shaker' style kitchen units
- Integrated Oven, hob and Fridge Freezer / Space for washing machine
- Two well proportioned bedrooms / Master with views over Six Mile Water
- Recently installed bathroom with panel bath and integrated shower over
- LED lighting and USB / USB-C plug sockets
- PVC double glazed windows and external doors / Gas-fired central heating / Damp proofing to ground floor walls / Interior wall insulation added to all walls
- Detached garage leading to a large, private fully enclosed garden

ACCOMMODATION

PVC double glazed entrance door to:

ENTRANCE FOYER

Fully tiled floor. Meter cupboard. Door to:

LIVING ROOM

18'5" x 12'6" (5.61m x 3.81m)

(max) Inglenook style fire place with multi solid fuel stove. USB and USB-C plug socket. Double radiator. Stair case to first floor with moulded hand rail and turned balustrade. Open to under stair.

DINING ROOM

11'10" x 9'2" (at max) (3.624 x 2.802 (at max))

Single radiator. Door too:

KITCHEN

12'6" x 6'11" (3.827 x 2.112)

Recently installed mid Grey 'Shaker' style kitchen comprising a full range of high and low level units with brushed chrome handles and contrasting worktops. Single drainer stainless steel sink unit with chrome mixer tap. Integrated appliances to include a four ring halogen hob with touch sensitive stainless steel overhead extractor fan and matching splashback. Integrated fridge freezer and space for a washing machine. USB and USB-C plug socket. Single radiator. PVC double glazed door to rear.

ENTRANCE REAR YARD

Artificial grass. Solid wood door to rear.

FIRST FLOOR LANDING

Access to loft.

BATHROOM

8'8 x 6'8 (2.64m x 2.03m)

Recently installed luxury white three piece suite featuring a panel bath with 'Anthracite' Mixer tap, shower attachment, integrated mains shower with 'Drench' shower head and fully tiled splashback. Wall mounted wash hand basin with 'Monobloc' Anthracite mixer tap, storage below and tiled splashback. Low flush push button WC. Chrome towel radiator.

BEDROOM 2

9'5 x 9'3 (2.87m x 2.82m)

(max) Over stairs storage with Gas combi boiler.

BEDROOM 1

12'6 x 8'8 (3.81m x 2.64m)

USB and USB-C plug socket. Double radiator.

DETACHED GARAGE

16'11 x 11'6 (5.16m x 3.51m)

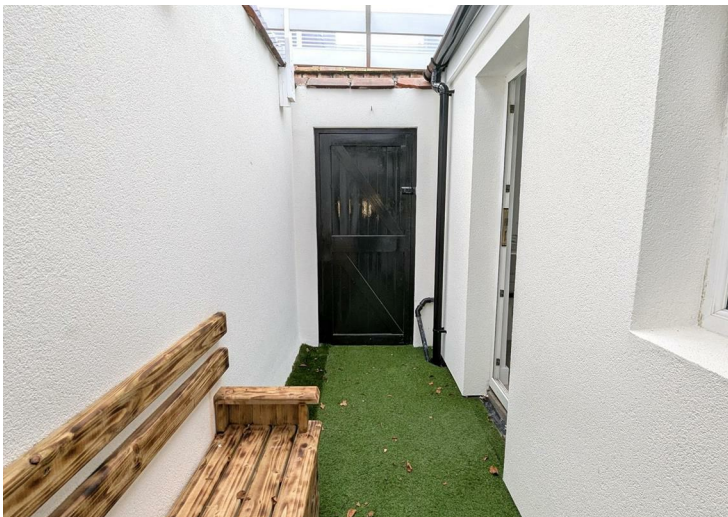
Electrics and lighting. Up and Over door. Rear door too:

ENCLOSED GARDEN

Large fully enclosed garden offering superb privacy. Raised patio and paving walkway to end wall with idyllic views over the six mile river.

IMPORTANT NOTE TO ALL POTENTIAL PURCHASERS;

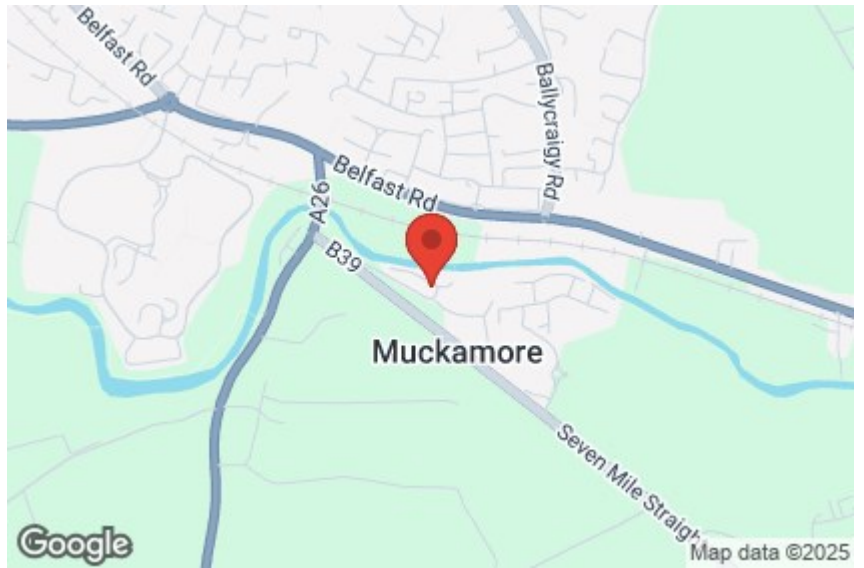
Please note, none of the services or appliances have been tested at this property.





Energy Efficiency Rating

	Current	Potential
Very energy efficient - lower running costs		
(92 plus) A		
(81-91) B		
(69-80) C	72	72
(55-68) D		
(39-54) E		
(21-38) F		
(1-20) G		
Not energy efficient - higher running costs		
Northern Ireland	EU Directive 2002/91/EC	



Mortgage **IQ**

Talk to one of our advisers today

12 Church Street, Antrim, Co. Antrim, BT41 4BA
T: 028 9417 0000
E: antrim@mortgageIQ.co.uk

IQ

WE KNOW WHAT IT TAKES

Country Estates (N.I) Ltd. for themselves and the Vendors of this property whose agents are, give notice that:

These particulars do not constitute any part of an offer or contract

All statements contained in these particulars as to this property are made without responsibility on the part of Country Estates (N.I) Ltd. or the vendor

None of the statements contained in these particulars as to this property are to be relied on as statements or representations of fact

Any intending purchaser must satisfy himself or otherwise as to the correctness of the statement contained in these particulars

The vendor does not make or give, and neither Country Estates (N.I) Ltd. nor any person in their employment, has any authority to make or give representation or warranty whatever in relation to this property.