

Tim Martin
.co.uk



6 Linden Close
Saintfield
BT24 7BH

Offers Around
£350,000

www.timmartin.co.uk
Telephone 028 97 568300

SUMMARY

A spacious detached residence set in generous gardens in this most popular residential park.

The property includes, lounge, living room, dining room, integrated kitchen and dining with adjoining laundry room and separate wc, two bedrooms and a bathroom at ground floor level.

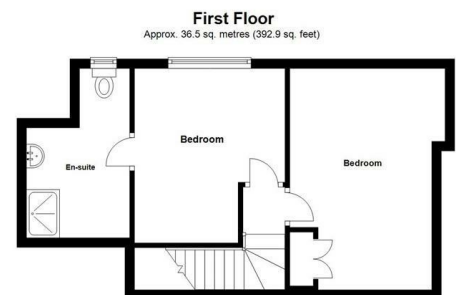
There are two additional bedrooms including one en suite at first floor level.

The property is fitted with oil fired central heating, double glazing and a double integral garage to the side of the property.

The residence is situated within walking distance of the village of Saintfield, doctors surgery, library and the local supermarket and to local primary and secondary schools, making this an ideal family home.

FEATURES

- Spacious Detached Residence Set In Generous Gardens In This Most Popular Residential Area
- Three Reception Rooms
- Spacious Integrated Kitchen With Dining Area
- Four Bedrooms - Two At Ground Floor And Two At First Floor Level Including One Bedroom En Suite
- Principal Bathroom At Ground Floor Level
- Double Garage With Twin Up & Over Doors
- Oil Fired Central Heating
- Double Glazing
- Generous Gardens To Front & Rear
- Within Walking Distance Of Saintfield Village



Reception Hall

Corniced ceiling; telephone connection point.

Lounge

18'0" x 12'0" (5.49m x 3.66m)

Including Bay

Stone tiled fireplace and hearth with display niches and hardwood mantle; gas fire; corniced ceiling with bullseye spot lighting; tv aerial connection point.

Rear Hallway

Built-in storage cupboard.

Family Room

12'11 x 10'5 (3.94m x 3.18m)

Wood laminate floor; tv aerial connection point.

Kitchen / Dining

16'2" x 13'8" (4.95m x 4.17m)

Maximum Measurements

1½ tub single drainer stainless steel sink unit with chrome mono mixer tap; extensive range of maple eye and floor level cupboards and drawers with matching glazed display cupboards; formica worktops; integrated Zanussi electric oven; Ariston ceramic hob with stainless steel extractor unit over; space and plumbing for dishwasher; space and power point for microwave; part tongue and groove ceiling; part tiled walls.

Dining Room

11'9 x 9'8 (3.58m x 2.95m)

Back Hall

PVC tiled floor; door to garage.

Laundry Room

8'5 x 6'8 (2.57m x 2.03m)

Single drainer stainless steel sink unit with cupboards and drawers under and/or space for washing machine and tumble dryer; PVC tiled floor; part tiled walls.

Separate WC

Low flush wc; PVC tiled floor.

Bathroom

12'11 x 7'1 (3.94m x 2.16m)

White suite comprising, panelled bath; pedestal wash hand basin; close coupled wc; quadrant tiled shower cubicle with Aqualisa electric shower; glass sliding shower doors and side panels; part tiled walls; tiled floor; hotpress with lagged copper cylinder and Willis type immersion heater; illuminated and mirror fronted bathroom cabinet.

Bedroom 1

12'11 x 11'4 (3.94m x 3.45m)

Bedroom 2

11'9 x 9'9 (3.58m x 2.97m)

Double built-in wardrobe.

First Floor

Landing

Bedroom 3

15'11 x 10'8 (4.85m x 3.25m)

Double built-in wardrobe; access to eaves storage.

Bedroom 4

11'8" x 10'5" (3.56m x 3.18m)

Maximum Measurements

En Suite

11'8" x 6'11" (3.56m x 2.13m)

Maximum Measurements

Coloured suited comprising, tiled shower cubicle with Mira Lec 8.3 electric shower; glass sliding shower doors; vanity unit with fitted wash hand basin and mixer taps, nest of drawers and cupboards under; close coupled wc; access to eaves storage.

Outside

Double wrought iron gates and bitmac drive providing ample parking.

Double Integral Garage

18'2 x 16'4 (5.54m x 4.98m)

Twin up and over doors; light and power points; Firebird 82 oil fired boiler.

Gardens

Spacious gardens to front and rear laid out in lawns and planted with a selection of ornamental and flowering shrubs including, Flowering Cherry, Pittisporum and Coronaster; flagged patios to front and rear. The gardens are enclosed with mature hedging to the rear to provide good privacy.

Capital / Rateable Value

£225,000. Rates Payable = £2186.55 per annum (approximately)

Tenure

Leasehold.

Ground Rent

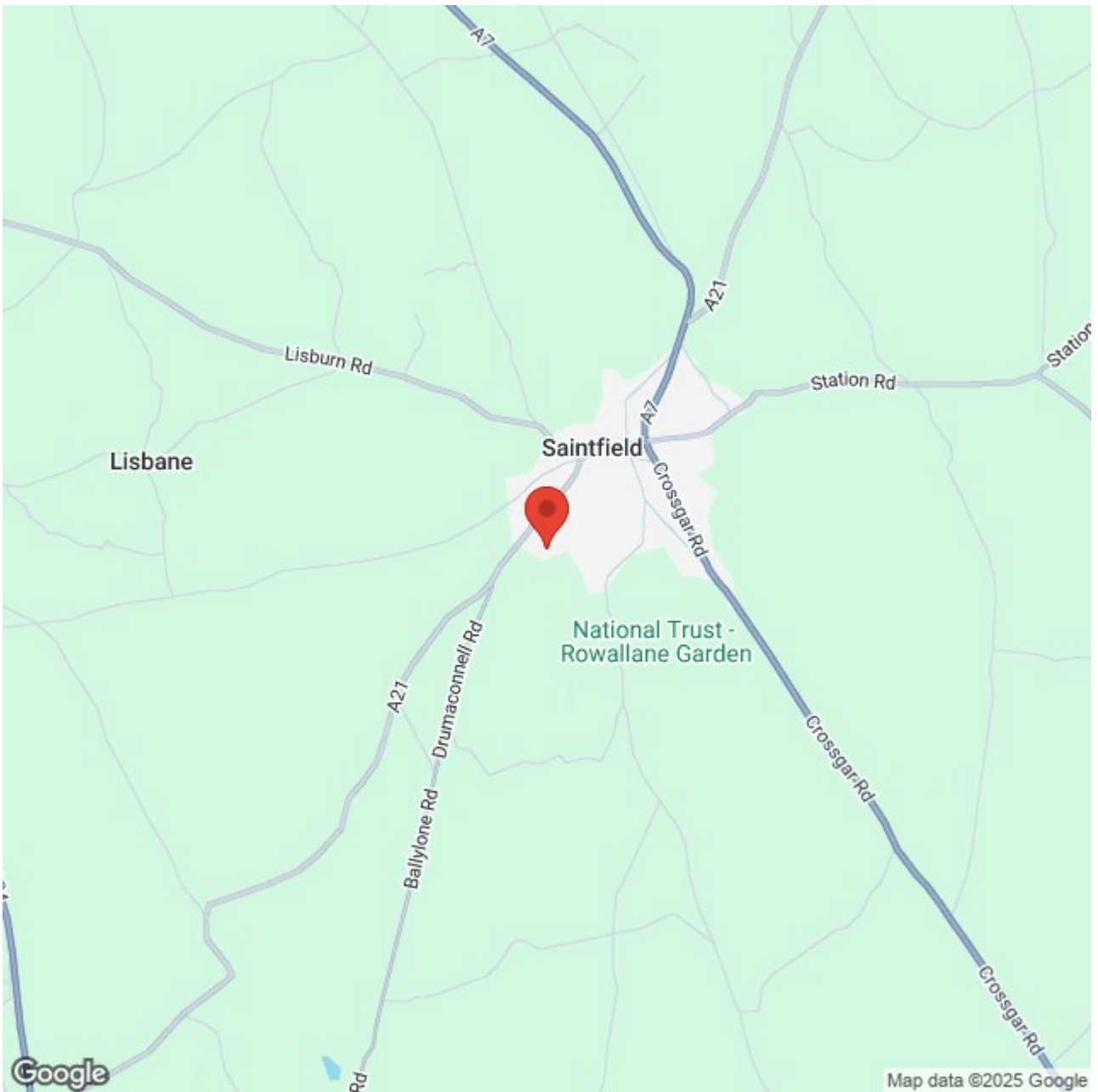
£24 per annum (approximately)











Map data ©2025 Google



Energy Efficiency Rating		Current	Potential
Very energy efficient - lower running costs			
(92 plus)	A		
(81-91)	B		
(69-80)	C		
(55-68)	D		
(39-54)	E	47	
(21-38)	F		
(1-20)	G		
Not energy efficient - higher running costs			
			66

Saintfield
 1B Main Street, Saintfield, BT24 7AA
 T 028 97 568300

Comber
 27 Castle Street, Comber, BT23 5DY
 T 028 91 8789596

Tim Martin & Company for themselves and for the vendors of this property have endeavoured to prepare these sales details as accurate and reliable as possible for the guidance of intending purchasers or lessees. These particulars are given for general guidance only and do not constitute any part of an offer or contract. The seller and us as agents, do not make any representation or give any warranty in relation to the property. We would recommend that all information contained in this brochure about the property be verified by yourself or professional advisors. Services, fittings and equipment referred to in the sales details have not been tested (unless otherwise stated) and no warranty will be given as to their condition. All measurements contained within this brochure are approximate. Please contact us prior to viewing the property. If there is any point of particular importance to you we would be pleased to provide additional information or make further enquiries. We will also confirm that the property remains available. This is particularly important if you are contemplating travelling some distance to view the property.