

Tim Martin
— .co.uk



Spacious Storage Facilities
Laurelbank Road
Saintfield
BT24 7LS

Rent
£7,000 Per Annum

www.timmartin.co.uk
Telephone 028 97 568300

SUMMARY

Situated at the junction of the Laurelbank and Middle Roads in Saintfield, a rare opportunity exists to lease a spacious store suitable for the storage of farm machinery, caravans, boats, cars and/or other equipment. Light and power can be made available.

An enclosed gravelled yard is situated to the front of the premises and provides good parking.

The premises are available immediately

- Spacious Store Extending To Approximately 3,000 Sqft
- Suitable For Storage Of Farm Machinery, Caravans, Boats, Cars And/Or Other Equipment
- Light And Power Available
- Enclosed Gravelled Yard To Front Providing Good Parking

Store 59'3 x 50'8 (18.06m x 15.44m)

3,000 sqft; double sliding doors; concrete floor.

Enclosed Gravelled Yard To Front

Rent

£7,000 per annum

Total NAV

TBC

Rates Payable

TBC

Lease

By Negotiation - On a full repairing and insuring lease.

Term

By Negotiation

Deposit

Deposit Total - 3 Months Rent

VAT

All prices, outgoings etc. are exclusive of but may be subject to VAT

Use

Subject to Planning and Landlords Approval

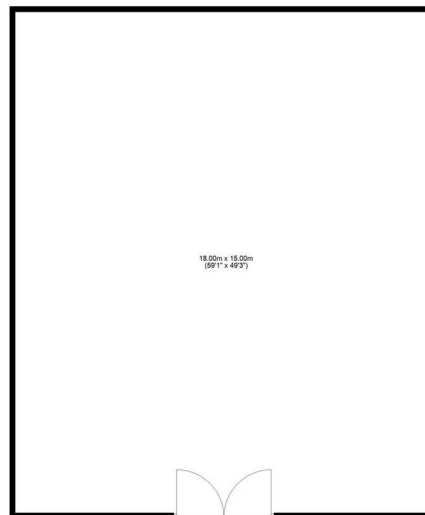
Note

All prospective tenants, should make their own enquiries to confirm the NAV/Rates Payable.





Ground Floor
 Approx. 270.0 sq. metres (2500.2 sq. feet)



Comber ■
 27 Castle Street, Comber, BT23 5DY
 T 028 91 8789596

Saintfield
 1B Main Street, Saintfield, BT24
 7AA
 T 028 97 568300

Tim Martin & Company for themselves and for the vendors of this property have endeavoured to prepare these sales details as accurate and reliable as possible for the guidance of intending purchasers or lessees. These particulars are given for general guidance only and do not constitute any part of an offer or contract. The seller and us as agents, do not make any representation or give any warranty in relation to the property. We would recommend that all information contained in this brochure about the property be verified by yourself or professional advisors. Services, fittings and equipment referred to in the sales details have not been tested (unless otherwise stated) and no warranty will be given as to their condition. All measurements contained within this brochure are approximate. Please contact us prior to viewing the property. If there is any point of particular importance to you we would be pleased to provide additional information or make further enquiries. We will also confirm that the property remains available. This is particularly important if you are contemplating travelling some distance to view the property.