



485 Lisburn Road, Belfast, BT9 7EZ  
Tel: 02890 661111  
Email: [info@fetherstons.com](mailto:info@fetherstons.com)  
Web: [www.fetherstons.com](http://www.fetherstons.com)

**45 Bristow Park**

Malone  
BT9 6TG

**Offers Over £995,000**

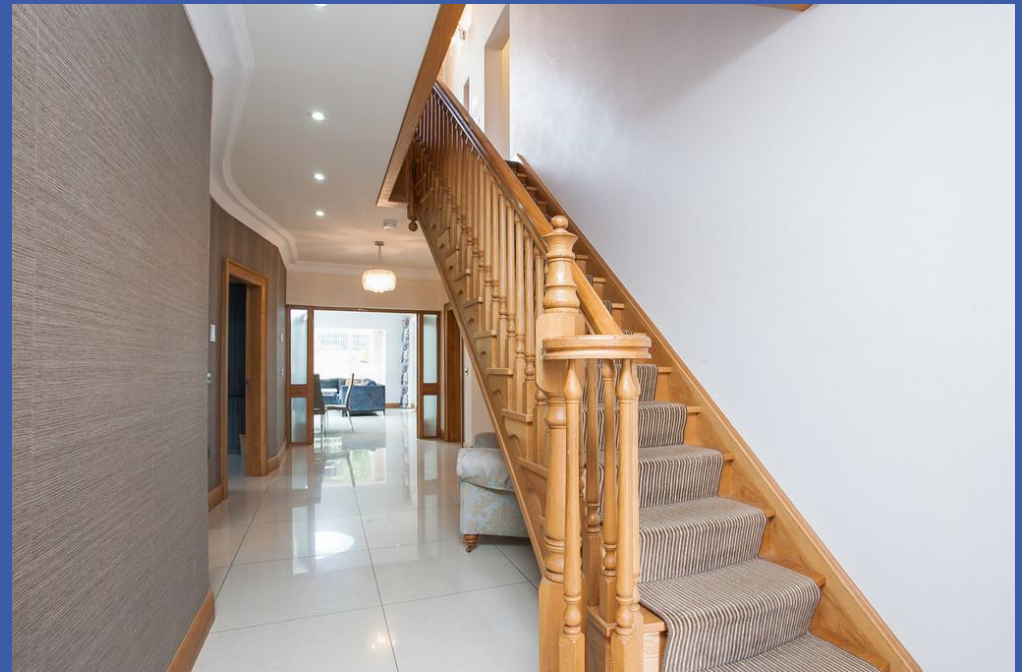
## 45 BRISTOW PARK, BT9 6TG

- Truly Exceptional Family Home Occupying a Generous Site in a Much Sought After Malone Location
- Exceptional Level of Specification and Presentation Throughout
- Generous Lounge with Feature Fireplace
- Living Room and Separate Home Office
- Magnificent Kitchen Open Plan to Family Dining Room / Separate Larder and Utility Room
- 6 Bedrooms Including 5 with Ensuite Facilities and Master Suite with His & Hers Dressing Rooms
- Dual Oil & Gas Fired Heating (Underfloor on Ground & First Floors)/Double Glazed/Beam Vacuum System
- Remote Control Double Entrance Gates Leading to Paved Parking Area to Front & Integral Garage
- Professionally Landscaped Gardens to the Rear with Large Lawn and Extensive Sun Terrace
- Close to Host of Amenities Including Shops, Public Transport & Lagan Meadows & Barnetts Park

This truly exceptional bespoke detached family home is situated in an exclusive leafy Avenue in one of Malone's most sought after residential locations. It is extremely convenient to a host of amenities in the surrounding Malone area including shops, public transport, Barnett's Park and leading primary and grammar schools.

The property offers quite superb well proportioned accommodation to be finished to the very highest specification throughout. This stunning family detached home has been designed to blend in with its surroundings with no expense spared and will be finished to an optimum specification in a classic contemporary design.

The internal accommodation briefly comprises a generous lounge, living room and separate home office along with a magnificent kitchen open plan to dining and family room along with a larder and utility room on the ground floor. In addition, over the first and second floors, there are six generous bedrooms, five with ensuite facilities along with a master suite with "his and hers" dressing rooms.







The internal accommodation is perfectly complemented by the delightful private, enclosed rear landscaped garden which backs on to open fields and mature trees and is set in immaculate lawns with boundary flowerbeds and a sheltered patio sitting area along with driveway parking and integral garage.

Rarely does this opportunity arise to purchase such an exquisite family home of this magnitude in the Malone area with so much to offer in the way of location, accommodation and specification, thus early attention is necessary so as to avoid disappointment or simply to appreciate it in its entirety.

### **PROPERTY COMPRISES**

Hardwood front door with glazed side windows and surround leading to..

**ENTRANCE PORCH** Cornice ceiling, polished tiled floor, glazed door and surround with etched glass to..

**RECEPTION HALL** Cornice ceiling, polished tiled floor, low voltage spots, feature curved wall

**LOUNGE 24' 4" x 13' 2" (7.42m x 4.01m)** Feature Marble fireplace with cast iron inset, Cornice ceiling, low voltage spots, bay window

**LIVING ROOM** Cornice ceiling, polished tiled floor, low voltage spots, uPVC double glazed door to side

**HOME OFFICE 11' 8" x 10' 0" (3.56m x 3.05m)** Bespoke range of built in furniture including three work stations, shelves, cupboards, drawers, Cornice ceiling, polished tiled floor, low voltage spots





**MAGNIFICENT FITTED KITCHEN 20' 0" x 13' 7" (6.1m x 4.14m)** Extensive range of high and low level units, Granite work surfaces with feature full wall matching splash back, Siemens 5 ring gas hob with extractor fan over, Siemens twin electric ovens, wine cooler, integrated dishwasher, Franke single drainer stainless steel sink unit with mixer tap and Granite drainer, integrated fridge and freezer, extensive island unit with matching Granite work surfaces, Franke stainless steel sink unit with Quooker tap and breakfast bar, Cornice ceiling, polished tiled floor, low voltage spots, under unit lighting, uPVC double glazed door to side, open plan to..

**OPEN PLAN FAMILY DINING ROOM 24' 8" x 17' 0" (7.52m x 5.18m)** Cornice ceiling, polished tiled floor, low voltage spots, feature central, circular ceiling light, bay window with floor to ceiling windows overlooking rear garden and patio, uPVC double glazed door to rear and side

**LARDER 7' 6" x 6' 10" (2.29m x 2.08m)** Range of high and low level units, matching Granite work surfaces, housing for American Fridge Freezer, cornice ceiling, polished tiled floor

**UTILITY ROOM 11' 10" x 6' 8" (3.61m x 2.03m)** Range of high and low level units, matching Granite work surfaces, Franke stainless steel sink unit with Granite drainer, polished tiled floor, plumbed for washing machine, extractor fan, uPVC double glazed door to rear, service door to garage

**1ST FLOOR SPACIOUS LANDING SITTING AREA** Feature window overlooking the rear garden, low voltage spots, shelved airing cupboard

**BEDROOM 18' 8" x 13' 3" (5.69m x 4.04m)** Cornice ceiling, low voltage spots

**DRESSING ROOM 9' 0" x 7' 9" (2.74m x 2.36m)** Bespoke built in furniture

**DRESSING ROOM 8' 3" x 7' 8" (2.51m x 2.34m)** Bespoke built in furniture





**ENSUITE BATHROOM** White suite comprising free standing bath with mixer tap, low flush wc, bidet, twin vanity unit with integrated mirror over, walk in shower cubicle with rainwater shower, extractor fan, low voltage spots, tiled floor, fully tiled walls

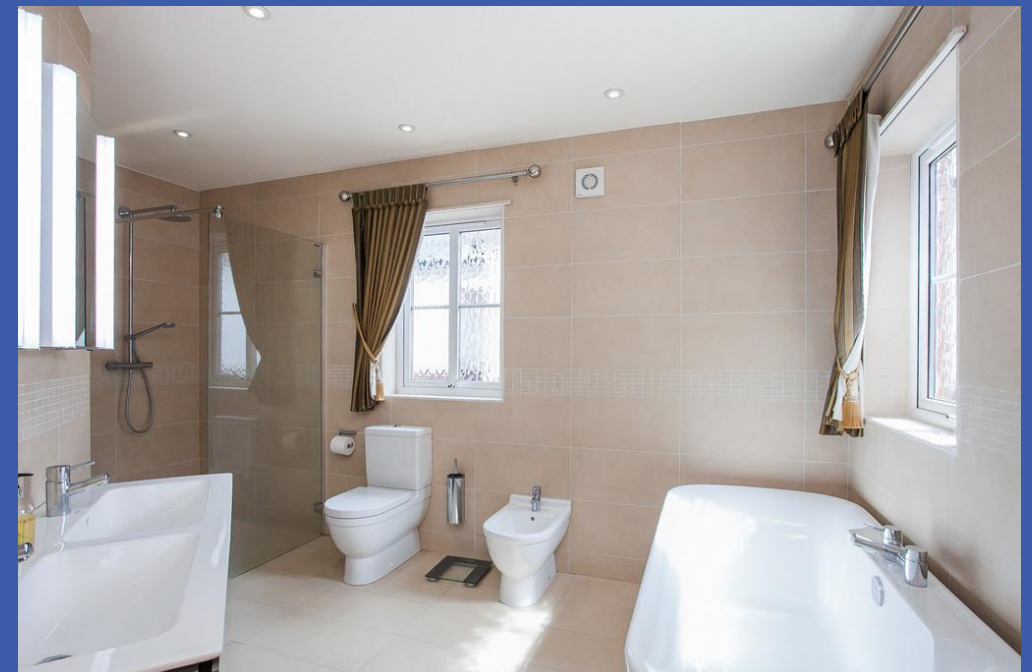
**BEDROOM 13' 0" x 11' 8" (3.96m x 3.56m)**

**BEDROOM 11' 8" x 11' 8" (3.56m x 3.56m)** Built in robe and storage

**JACK & JILL ENSUITE** White suite comprising fully tiled shower cubicle, vanity unit, low flush wc, chrome heated towel rail, tiled floor, fully tiled walls, low voltage spots

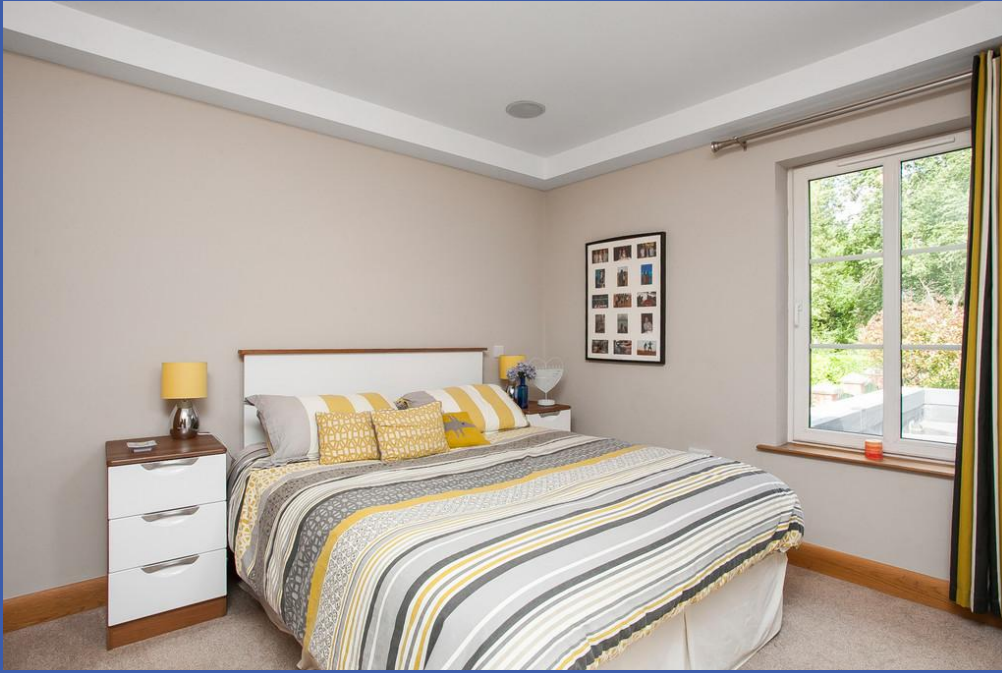
**BEDROOM 26' 0" x 20' 0" (7.92m x 6.1m)** (at widest points) Cornice ceiling, low voltage spots, extensive range of built in robes and storage

**ENSUITE** White suite comprising low flush wc, walk in shower cubicle with rainwater shower, vanity unit with integrated mirror, fully tiled walls, low voltage spots, feature glass blocks to wall



**2ND FLOOR GALLERY LANDING** Low voltage spots and sky lights









**BEDROOM 18' 10" x 11' 1" (5.74m x 3.38m)**

**ENSUITE** White suite comprising vanity unit, low flush wc, fully tiled shower cubicle with rainwater shower, chrome heated towel rail, tiled floor, fully tiled walls, Velux window, low voltage spots

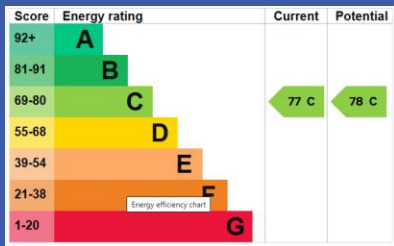
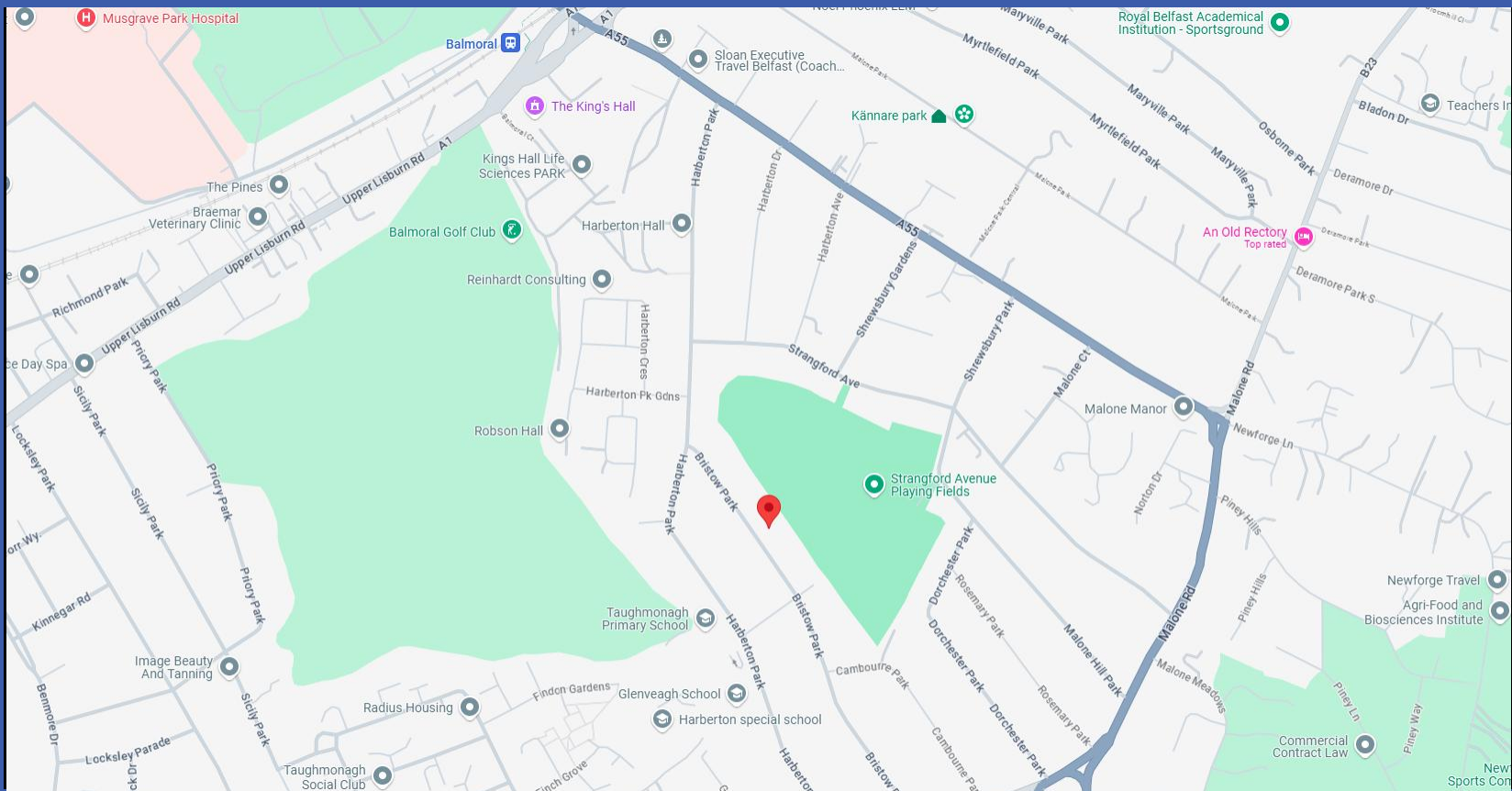
**BEDROOM 20' 6" x 9' 0" (6.25m x 2.74m)** Velux window, built in storage, storage in eaves

**OUTSIDE** Electric entrance gates and pedestrian entrance to tarmac parking area for several cars to front with boundary wall and ornate railings, leading to..

**GARAGE** Roller shutter door, power and light, oil fired boiler, gas fired boiler, Beam Vacuum system

Magnificent, landscaped enclosed and private extensive rear garden in beautifully presented lawns, boundary flower beds with stone wall surround and a variety of mature plants, bushes and shrubs and backing on to open fields and mature trees. Large, sheltered paved patio area. Outside tap, lighting and power points





Fetherstons Estate Agents for themselves and for the Vendors or Lessors of the property whose agents they are give notice that; i) these particulars are given without responsibility of Fetherstons or the Vendors or Lessors as a general outline only, for the guidance of prospective purchasers or tenants, and do not constitute the whole or any part of an offer or contract; ii) Fetherstons cannot guarantee the accuracy of any description, dimensions, references to condition, necessary permissions for the use and occupation and other details contained herein and any prospective purchasers or tenants should not rely on them as statements of representation of fact but must satisfy themselves by inspection or otherwise as to the accuracy of each of them; iii) no employee of Fetherstons has authority to make or give any representation or warranty or enter into any contract whatsoever in relation to the property; iv) VAT may be payable on the purchase price and / or rent, all figures are quoted exclusive of VAT, intending purchasers or tenants must satisfy themselves as to the applicable VAT position, if necessary by taking the appropriate professional advice; v) Fetherstons will not be liable in negligence or otherwise, for any loss arising from the use of these particulars; vi) Appliances not tested or verified.