

**Circa. 3.5 Acres Of Farm Land
Close To Annaghmore
Ideal For Hobby Farmer Or Neighbouring Farmer**

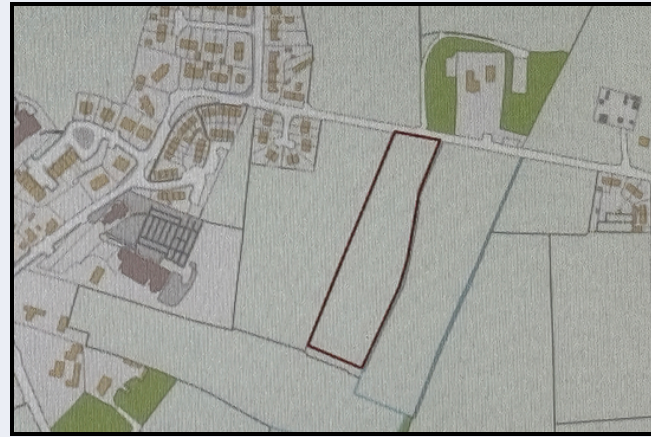


**C. 3.5 Acres At Moss Road, Annaghmore, Portadown, Co Armagh
BT62 1NB**

- **Circa. 3.5 Acres**
- **Currently In Grass**
- **All In One Field**
- **Ideal For Neighbouring Farmer**

PRICE GUIDE £75,000

These details do not constitute any part of an offer or contract. None of the statements contained in this sales brochure are to be relied on as statements or representations of fact and any intending purchaser must satisfy themselves by inspection or otherwise as to their correctness. The vendor does not make or give, and neither Alastair Stevenson the Property Spot nor any person in its employment has any authority to make or give any representation or warranty whatsoever in relation to this property. All dimensions are approximate and are taken at widest points



We have been instructed to offer for sale this field, which extends to around 3.5 acres. It fronts onto the Moss Road, located one field away from the Meadowview Lodge Development in Annaghmore.

The field may be of interest to a neighbouring farmer or alternatively for someone who wants to buy a field for a couple of horses or sheep. Seldom does a small field like this come onto the market.

For further details contact Alastair Stevenson