


Blaris Park, Lisburn, County
Antrim, BT28

Asking Price: £124,950
Leasehold

 **Reeds Rains**

reedsrains.co.uk

Blaris Park, Lisburn, County Antrim, BT28

Asking Price: £124,950 Leasehold

Council Tax Band:

EPC Rating: TBC

Charming 3-bedroom mid-terraced house. This property benefits from off-street parking, a spacious garden, and modern kitchen. Conveniently located in a sought-after area, close to local amenities and excellent transport links. Ideal for families or first-time buyers looking for a cosy home.

Entrance Hall

Laminate flooring

Living Room

14'5" x 12' (4.4m x 3.66m)

Laminate flooring.

Kitchen/ Dining

17'5" x 10'1" (5.3m x 3.07m)

Exceptional range of units, built-in oven and hob unit, plumbed for washing machine, sink unit, laminate work tops, open to casual dining area.

Rear Porch

Landing

Bedroom 1

11' x 10'8" (3.35m x 3.25m)

Built-in robe

Bedroom 2

12'1" x 9' (3.68m x 2.74m)

Built-in robe

Bedroom 3

9'6" x 8'4" (2.9m x 2.54m)

Built-in robe

Bathroom

Panelled bath, wash hand basin, low level WC, panelling. Electric shower unit.

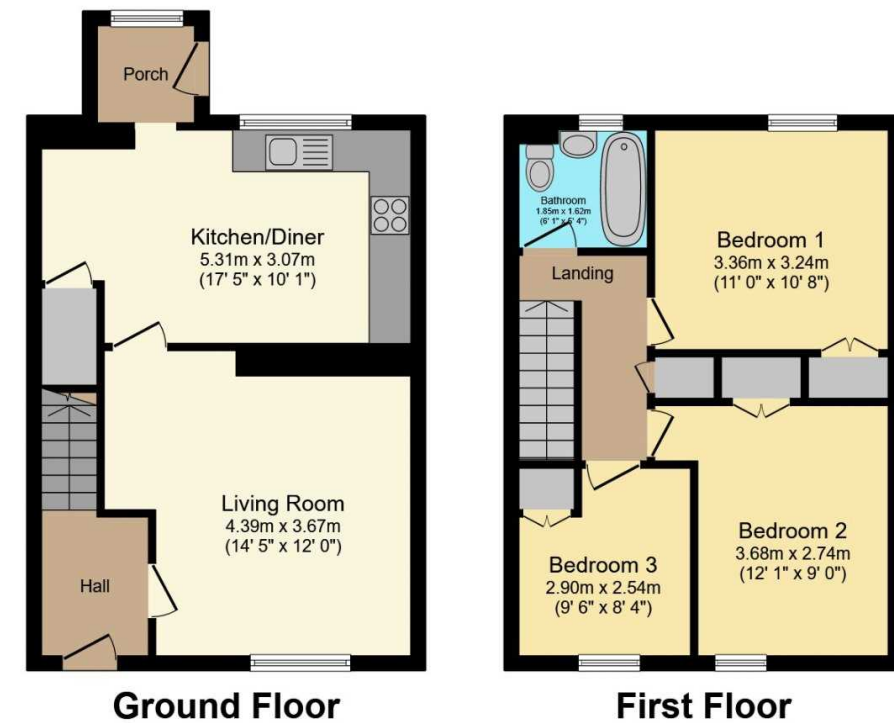
Road, Glengormley, County Antrim, N Ireland BT36 6HN, 14/16 Market Street, Lisburn, County Antrim, N Ireland BT28 1AB and 2 Frances Street, Newtownards, County Down, N Ireland BT23 4JA are operated by Favscio NI Limited which is independently owned and operated under a Licence from Reeds Rains Limited.

All Measurements
All Measurements are Approximate.

Laser Tape Clause
All measurements have been taken using a laser tape measure and therefore, may be subject to a small margin of error.

Floorplan Clause
Measurements are approximate. Not to Scale. For illustrative purposes only.

For full EPC please contact the branch.



Total floor area 82.4 m² (887 sq.ft.) approx

This floor plan is for illustrative purposes only. It is not drawn to scale. Any measurements, floor areas (including any total floor area), openings and orientation are approximate. No details are guaranteed, they cannot be relied upon for any purpose and they do not form part of any agreement. No liability is taken for any error, omission or misstatement. A party must rely upon its own inspection(s). Powered by www.focalagent.com

The Reeds Rains branches at 350 Upper Newtownards Road, Ballyhackamore, Belfast, N Ireland BT4 3EX, 18 Main Street, Bangor, Co Down, N Ireland BT20 5AG, Somerset House, 240-242 Ormeau Road, Belfast, Co Antrim, N Ireland BT7 2FZ, 10 High Street, Carrickfergus, Co Antrim, N Ireland BT38 7AF, 8/8A Carnmoney

We may refer you to recommended providers of ancillary services such as Conveyancing, Mortgages, Insurance and Surveying. We may receive a referral fee for recommending their services. You are not under any obligation to use the services of the recommended provider, which may also be an associated company of Reeds Rains.

Other important information which you will need to know about this property can be found at reedsrains.co.uk