

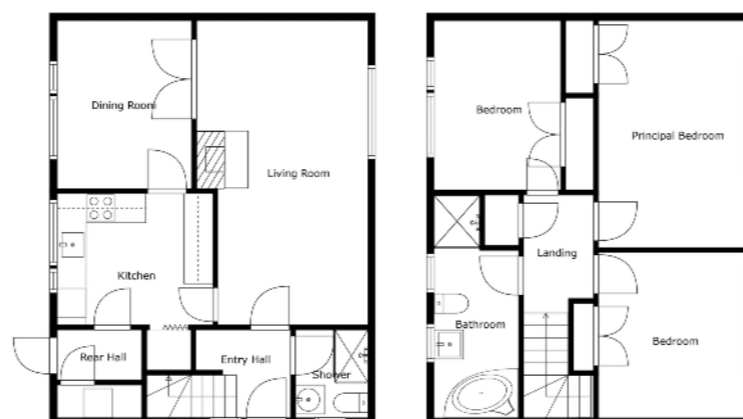
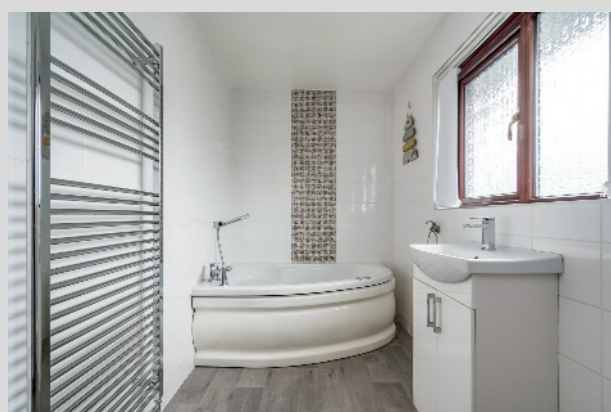
Outside

GARAGE: Up and over door.

Driveway leading to garage. Garden to front. Enclosed rear garden laid in gardens, paving and decking, shed.

TEMPLETON
ROBINSON

TEMPLETON
ROBINSON



Floor 1

Floor 2

Sizes And Dimensions Are Approximate. Actual May Vary.

Lisburn Road - 028 90 66 3030
Ballyhackamore - 028 90 65 0000
North Down - 028 90 42 4747
Lisburn - 028 92 66 1700
www.templetonrobinson.com



These particulars do not constitute any part of an offer or contract. None of the statements contained in these particulars are to be relied on as statements or representations of fact and intending purchasers must satisfy themselves by inspection or otherwise to the correctness of each of the statements contained in these particulars. The Vendor does not make or give, neither Templeton Robinson, nor any person in its employment has any authority to make or give, any representation or warranty whatever in relation to this property. All dimensions are taken to nearest 3 inches.



This excellent and spacious mid terrace home has been carefully maintained by the current owners. It occupies a much sought after residential location tucked away within the ever popular Moira Road area. There are a host of amenities close by. The property offers well proportioned accommodation and is further enhanced by the enclosed gardens both to the front and rear. Overall it is ideally suited to cater for all those modern day living requirements.

All in all this great home has so much more to offer including its excellent location and generous accommodation, thus it will have a wide ranging appeal. Recent sales in the area have proven extremely successful and early inspection is advised so as not to miss out.

Offers Around
£119,950

27 Hertford Crescent,
LISBURN,
BT28 1SY

Viewing by
appointment with
& through agent
028 9066 3030

27 Hertford Crescent,
LISBURN,
BT28 1SY

Property Features

- Attractive well presented mid terrace property in an extremely popular and convenient location
- Spacious lounge with feature fireplace and multi fuel stove
- Fitted kitchen with a range of high and low level units and breakfast bar
- Three good sized bedrooms, master with built in storage
- Family bathroom with 3 piece suite
- Oil fired central heating and double glazing
- Gardens to front and enclosed to rear
- Extremely convenient location with a host of amenities close by to include local schools and shops

Location:

From Moira Road, turn into Ballycreen Drive. Turn into Hertford Crescent and no.14 is on the right hand side.

Property Comprises

Ground Floor

Solid wooden front door to:

RECEPTION HALL: Ceramic tiled floor.

LIVING ROOM: 20' 7" x 11' 7" (6.27m x 3.53m) Fireplace with stone surround, wood effect laminate flooring. French doors to:

DINING ROOM: 11' 4" x 9' 1" (3.45m x 2.77m) Matching wood effect laminate flooring. Door to:

DOWNSTAIRS SHOWER ROOM: White bathroom suite comprising shower cubicle with electric shower, low flush wc, pedestal wash hand basin, ceramic tiled floor.

KITCHEN: 10' 7" x 8' 11" (3.23m x 2.72m) Modern fitted kitchen with a range of high and low level units, four ring electric hob, stainless steel and glass extractor fan, electric oven, stainless steel sink unit with drainer. Door to rear hallway. Ceramic tiled floor.

First Floor

LANDING: Access to floored attic.

BEDROOM (1): 15' 4" x 9' 11" (4.67m x 3.02m) Double built in wardrobes, wood effect laminate flooring.

BEDROOM (2): 11' 2" x 9' 11" (3.4m x 3.02m) Double built-in wardrobe, wood effect laminate flooring.

BEDROOM (3): 11' 5" x 8' 7" (3.48m x 2.62m) Double built-in wardrobe.

MODERN BATHROOM: Modern white bathroom suite comprising corner panelled bath, separate fully tiled shower cubicle, low flush wc, pedestal wash hand basin with vanity unit, fully tiled walls, wood effect laminate flooring.

