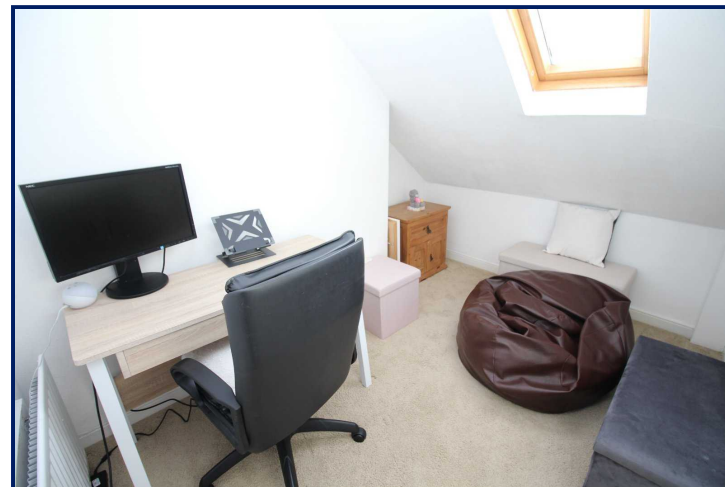
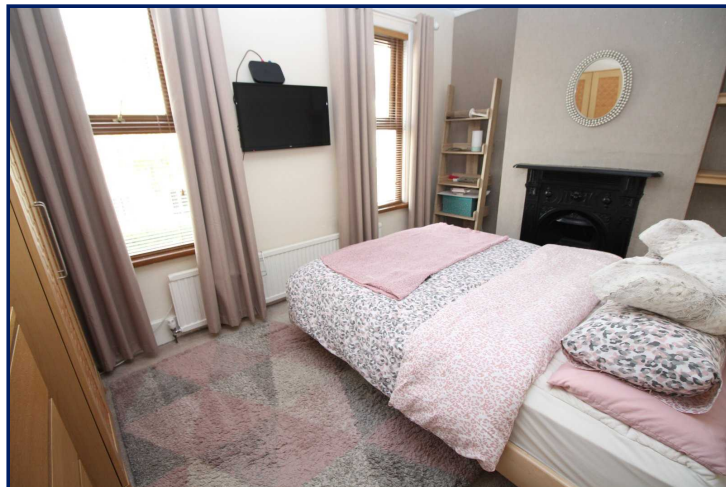




Energy Efficiency Rating		Current	Potential
Very energy efficient - lower running costs			
(92+)	A		
(81-91)	B		
(69-80)	C		
(55-68)	D	60	69
(39-54)	E		
(21-38)	F		
(1-20)	G		
Not energy efficient - higher running costs			
England, Scotland & Wales		EU Directive 2002/91/EC	



10 Adelaide Avenue, Whitehead,
BT38 9RZ

Offers in the region of:
£125,000

 Reeds Rains

reedsrains.co.uk

10 Adelaide Avenue, Whitehead

Description

Three storey terrace property situated in the heart of Whitehead town centre. The well presented interior offers lounge through to dining area, well fitted kitchen, four bedroom and an excellent white bathroom suite. Boasting a gas fired central heating system and double glazed windows. Externally there is a well enclosed rear yard. Just a short walk to local shopping facilities, coffee shops, transport facilities and public transport links this home is sure to suit a wide spectrum of buyers.

Entrance Porch

Entrance Hall

Lounge/Dining Area

21'4" x 10'2" (6.5m x 3.1m)
Wall mounted electric fire.

Kitchen

11'4" x 7'4" (3.45m x 2.24m)
Excellent range of fitted high and low level units. Built in hob and oven. One and a half bowl stainless steel sink unit with mixer tap. Part tiled walls.

First Floor Landing Return

Bathroom

White suite comprising panelled bath with wall mounted Mira electric shower, pedestal wash hand basin and low flush wc. Part tiled walls. Heated towel rail. Storage cupboard with gas boiler.

First Floor

Bedroom 1

13'9" x 9'2" (4.2m x 2.8m)

Bedroom 2

10'1" x 7'9" (3.07m x 2.36m)

Second Floor

Bedroom 3

12'4" x 9'1" (3.76m x 2.77m)

Bedroom 4

10'1" x 6'7" (3.07m x 2m)

Front Garden

Enclosed Rear Yard

Well enclosed laid in paving.

The Reeds Rains branches at 350 Upper Newtownards Road, Ballyhackamore, Belfast, N Ireland BT4 3EX, 18 Main Street, Bangor, Co Down, N Ireland BT20 5AG, Somerset House, 240-242 Ormeau Road, Belfast, Co Antrim, N Ireland BT7 2FZ, 10 High Street, Carrickfergus, Co Antrim, N Ireland BT38 7AF, 8/8A Carrmonee Road, Glengormley, County Antrim, N Ireland BT36 6HN, 14/16 Market Street, Lisburn, County Antrim, N Ireland BT28 1AB and 2 Frances Street, Newtownards, County Down, N Ireland BT23 4JA are operated by Favscos NI Limited which is independently owned and operated under a Licence from Reeds Rains Limited.

All Measurements are Approximate.

Laser Tape Clause

All measurements have been taken using a laser tape measure and therefore, may be subject to a small margin of error.



For full EPC please contact the branch.