



## 15 Slieve Foy Place

Warrenpoint, Newry, BT34 3NR

**Offers In The Region Of  
£219,950**

Welcome to Slieve Foy Place in the charming town of Warrenpoint! This delightful 4-bedroom semi-detached house is a true gem waiting to be discovered. Situated in a convenient location, this property offers the perfect blend of comfort and accessibility. Situated 500m from the beach.

As you step inside, you'll be greeted by a spacious interior that is perfect for both relaxing and entertaining.

One of the standout features of this property is its spacious exterior. Whether you enjoy gardening, or outdoor dining, the outdoor space here offers endless possibilities.

Located in a sought-after area, this house is ideal for those looking for a peaceful retreat without sacrificing convenience. With local amenities, schools, and transport links nearby, everything you need is within easy reach.

Don't miss out on the opportunity to make this house your home. Contact us today to arrange a viewing and experience the charm of Slieve Foy Place for yourself.

# 15 Slieve Foy Place

Warrenpoint, Newry, BT34 3NR



- Oil Fired Central Heating
- Shared access to rear garden
- Tiered Garden to rear with Block Built Shed
- Double Glazing throughout
- Off street Parking
- Large gardens to front and rear
- Close proximity to Warrenpoint Town Centre and all its amenities

- Hallway

Living Room

11'6" x 11'1" (3.51 x 3.40)

Bedroom 1

11'5" x 11'3" (3.50 x 3.43)

Bedroom 2

11'3" x 8'6" (3.44 x 2.61)

Kitchen

14'4" x 11'10" (4.38 x 3.62)

Lounge

11'4" x 8'3" (3.47 x 2.52)

Porch

1st Floor

Landing
- Bedroom 3

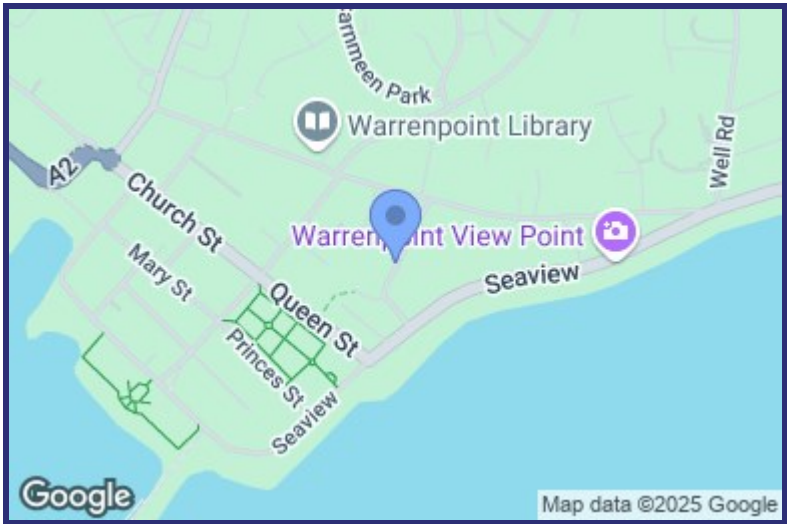
11'1" x 10'4" (3.38 x 3.17)

Bedroom 4

10'6" x 7'4" (3.22 x 2.25)

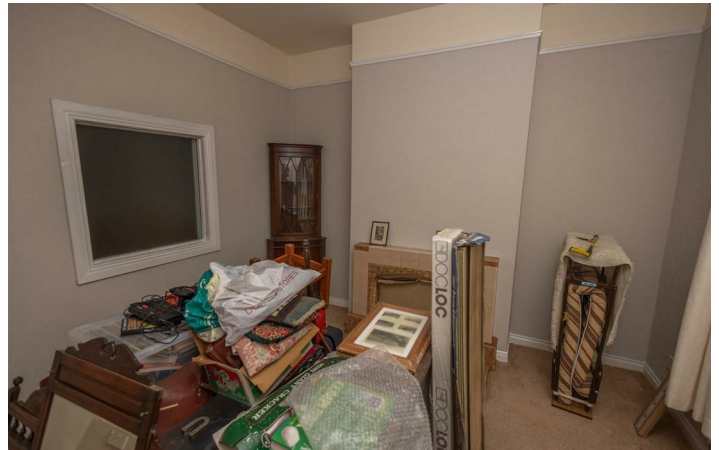
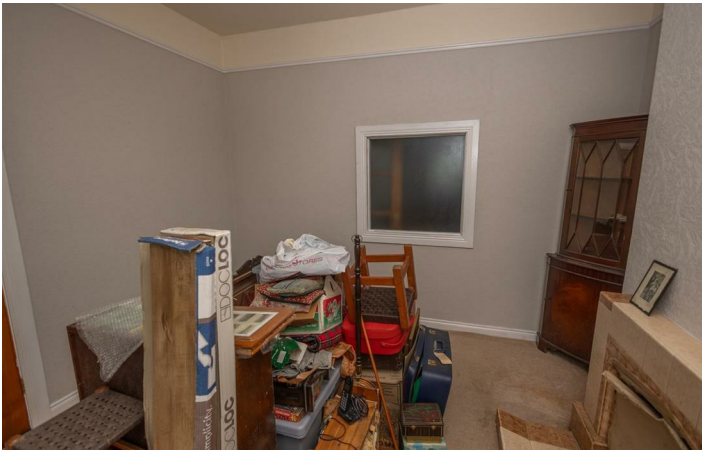
Bathroom

7'4" x 6'2" (2.25 x 1.88)

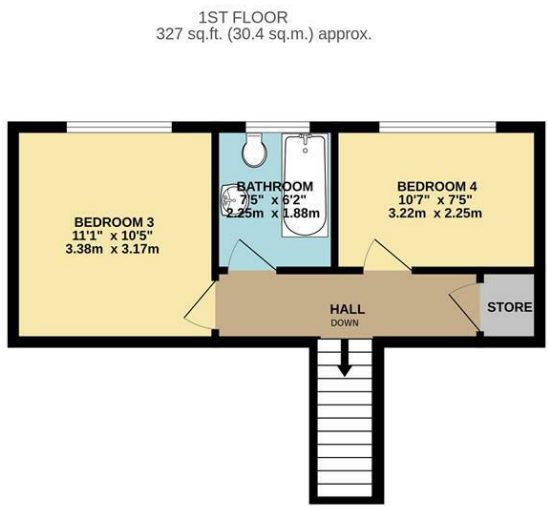
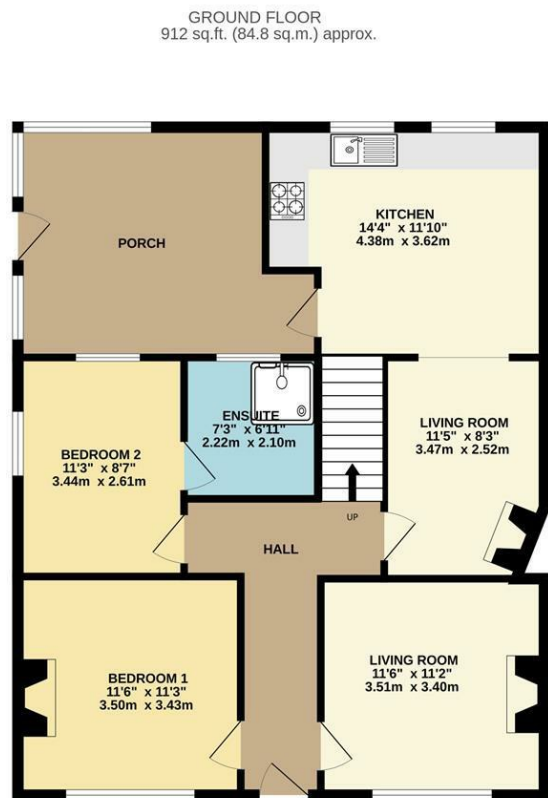


Energy Efficiency Rating		
	Current	Potential
Very energy efficient - lower running costs		
(92 plus) A		
(81-91) B		
(69-80) C		
(55-68) D	56	58
(39-54) E		
(21-38) F		
(1-20) G		
Not energy efficient - higher running costs		
Northern Ireland		EU Directive 2002/91/EC





Floor Plan



TOTAL FLOOR AREA: 1239 sq.ft. (115.1 sq.m.) approx.  
Whilst every attempt has been made to ensure the accuracy of the floorplan contained here, measurements of doors, windows, rooms and any other items are approximate and no responsibility is taken for any error, omission or mis-statement. This plan is for illustrative purposes only and should be used as such by any prospective purchaser. The services, systems and appliances shown have not been tested and no guarantee as to their operability or efficiency can be given.  
Made with Metropix ©2024

We look forward to working with you...



We get there together

Our experienced and trusted team have assisted 1000's of people with buying, selling and letting.



We're here for you

Client care is at the very heart of what we do. We will guide and support you every step of the way.



Always close by

With multiple offices and a leading marketing team, we will make sure that you get the very best result.

**Newry:**  
30 Monaghan Street, Newry, Co.Down, BT35 6AA  
T: 028 300 50633 E: newry@bradleyni.com

**Warrenpoint:**  
25 Duke Street, Warrenpoint, Co.Down, BT34 3JY  
T: 028 417 73777 E: warrenpoint@bradleyni.com

**Rostrevor:**  
14 Bridge Street, Rostrevor, Co.Down, BT34 3BG  
T: 028 417 39999 E: rostrevor@bradleyni.com

**Belfast:**  
55-59 Adelaide Street, Belfast, Co.Antrim, BT2 8FE  
T: 028 962 09909 E: belfast@bradleyni.com

These particulars, whilst believed to be accurate are set out as a general outline only for guidance and do not constitute any part of an offer or contract. Intending purchasers should not rely on them as statements of representation of fact, but must satisfy themselves by inspection or otherwise as to their accuracy. No person in this firms employment has the authority to make or give any representation or warranty in respect of the property.