

MARC FEGAN

BESPOKE ESTATE AGENT



284 Belvedere Manor, Craigavon, BT67 9PA
Offers over £159,950

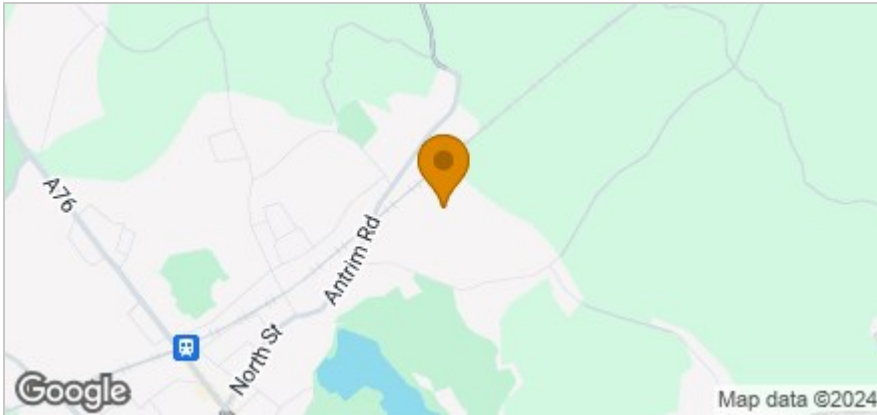
MARC FEGAN
BESPOKE ESTATE AGENT



Floor Plan



Area Map



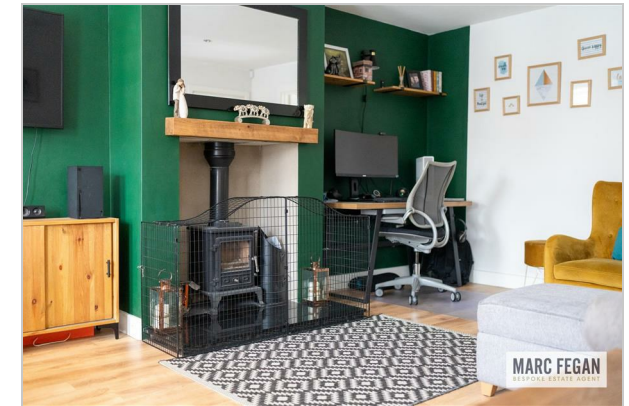
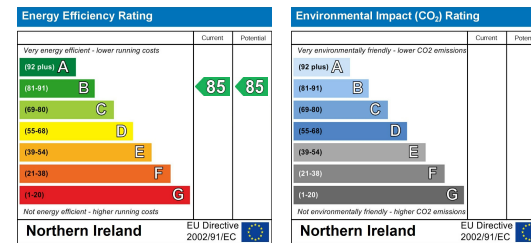
Accommodation

- Three Bedroom Semi-Detached Home
- Spacious Lounge With Feature Multi Fuel Stove
- Three Well Proportioned Bedrooms Primary With En-Suite
- Oil Fired Central Heating & Double Glazed Windows
- Spacious Gardens & Driveway
- Modern Three Piece Bathroom Suite
- Luxury Fitted Kitchen & Spacious Dining Area
- Popular Residential Development
- Convenient Location - Close To Schools & Amenities
- Early Viewing Recommended

Viewing

Please contact our Marc Fegan Bespoke Estate Agent Office on 02838894608 if you wish to arrange a viewing appointment for this property or require further information.

Energy Efficiency Graph



These particulars, whilst believed to be accurate are set out as a general outline only for guidance and do not constitute any part of an offer or contract. Intending purchasers should not rely on them as statements of representation of fact, but must satisfy themselves by inspection or otherwise as to their accuracy. No person in this firm's employment has the authority to make or give any representation or warranty in respect of the property.