



3 Claghlin Manor, Ballyclare, BT39 9LH

£1,250 Per Month



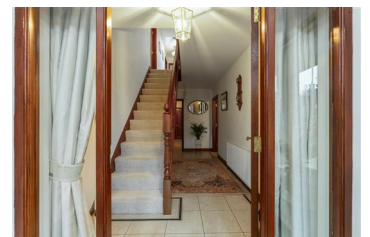
Immaculately presented, four bedroom, four reception, detached family home with matching detached garage, occupying a cul de sac position within the sought after Claghlin Manor development, situated off Rashee Road, Ballyclare.

The property comprises entrance porch, entrance hall, furnished cloakroom, lounge with focal point fireplace, separate family room with focal point fireplace, dining room/sitting room with open arch to modern fitted kitchen, utility room, study/office, four well proportioned first floor bedrooms, to include principal bedroom with en suite shower room, and family bathroom with four piece suite.

Externally the property enjoys generous sized private driveway area finished in brick pavior, matching detached garage, and low maintenance side and rear gardens.

Other attributes include oil fired central heating, PVC double glazing and convenient location.

Early viewing highly recommended to avoid disappointment.



INVESTORS IN PEOPLE
We invest in people Gold

PRS Property Redress Scheme

Proudly sponsoring

 Northern Ireland Children's Hospice

Awards

 **Telegraph**
PROPERTY AWARDS 2018

 **Telegraph**
PROPERTY AWARDS 2019

 Shortlisted
TheNegotiator Awards 2018

 Shortlisted
TheNegotiator Awards 2019

 THE INVESTORS IN PEOPLE AWARDS 2019 Finalist

 TheNegotiator Awards 2019 GOLD

WE ARE MACMILLAN.
CANCER SUPPORT