



2-6 Castle Street, Ballymena, BT44 0AT

Offers in the region of £160,000



Located in the heart of Glenarm Village, within easy walking distance of Glenarm forest and Glenarm Castle, this building offers both residential and commercial accommodation.

Comprised of a ground floor commercial unit (currently utilised and let as a coffee shop) with a charming self contained three bedroom duplex apartment over.

The building, set in picturesque village surroundings and enjoying a prominent position on the corner of Castle Street and Toberwine Street, offers potential purchasers a rare opportunity acquire a healthy investment property in the centre of Glenarm.

Property Features

- Commercial ground floor premises
- Currently let for use as a coffee shop, generating a good rental income
- Spacious duplex apartment, set over first and second floors
- Bathroom fitted with a W/C, wash hand basin and bath with electric shower over
- Three well-proportioned bedrooms, one first floor and two second floor
- Electric heating system
- PVC double glazed windows
- Located in the heart of Glenarm village
- Within easy walking distance of Glenarm forest and Glenarm Castle
- Excellent investment potential

Accommodation

(Dimensions and Areas are approximate)

2 Castle Street - Commercial Premises

Currently a coffee shop, the premises enjoys a prominent position on the corner of Castle Street and Toberwine Street in the heart of Glenarm Village.

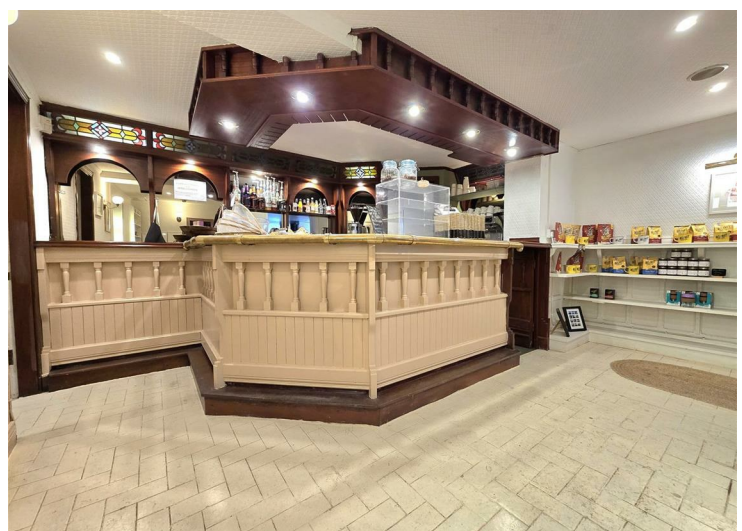
An attractive entrance door, dating from the premises' former use as a public house, leads into the main seating area of the coffee shop. Beyond that lies additional seating, the serving area, separate male and female toilet facilities and a small kitchen and store room to the rear.

Externally there is a small, fully enclosed back yard.

The ground floor commercial unit (circa 82 sqm/885 sq ft) is currently leased to a business operating as a coffee shop. The unit generates £4,500 per annum in rent on an internal insuring and repairing lease.

The Net Annual Value (NAV): £2,000.00 which equates to a commercial rates burden of £1,344.83 (currently the responsibility of the tenant).

Electric heating system.



6 Castle Street - Duplex Apartment

The duplex apartment offers spacious, flexible living accommodation and can be configured as a one reception, three bedrooms or as two receptions, two bedrooms, depending on the occupants preference. The apartment is sold with vacant possession, however is capable of generating a strong rental income.

Domestic rates burden £826.96 per annum
2024/25

Ground Floor

Entrance Hall

The apartment is accessed through its own door from the street and by stairs to the apartment's internal door on the first floor. (The tenant of the coffee shop has access to the meter board located at the foot of the stairs).

First Floor

Living/Dining Room 13'1" x 9'10" (4.0 x 3.01)

Hallway

Living Room/Bedroom 3 19'3" x 14'4" (max) (5.88 x 4.39 (max))

Spacious living room with a dual aspect.
Built in hot press.

Kitchen 11'8" x 9'0" (max) (3.57 x 2.76 (max))

Fitted with a range of low level units and eye level shelving. Laminate work surfaces with tiled splashback areas over.

Cooker with a stainless steel extractor canopy over, washing machine and fridge/freezer.

Bathroom 8'2" x 5'8" (2.51 x 1.74)

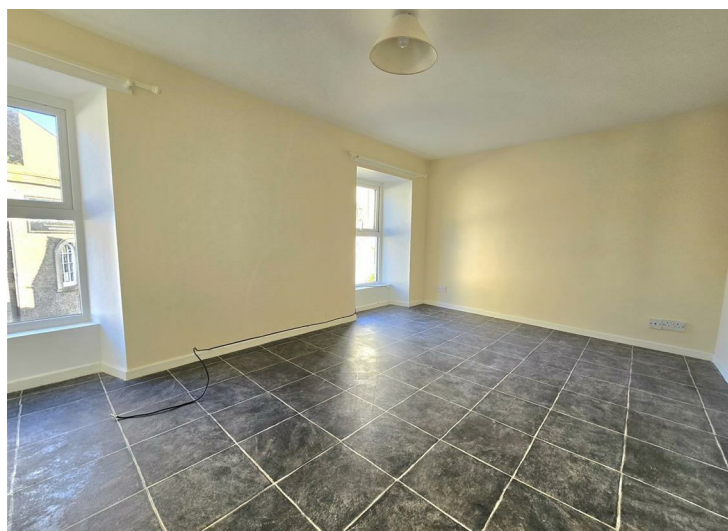
Fitted with a W/C, wash hand basin and bath with electric shower over. Tiled splash back areas.

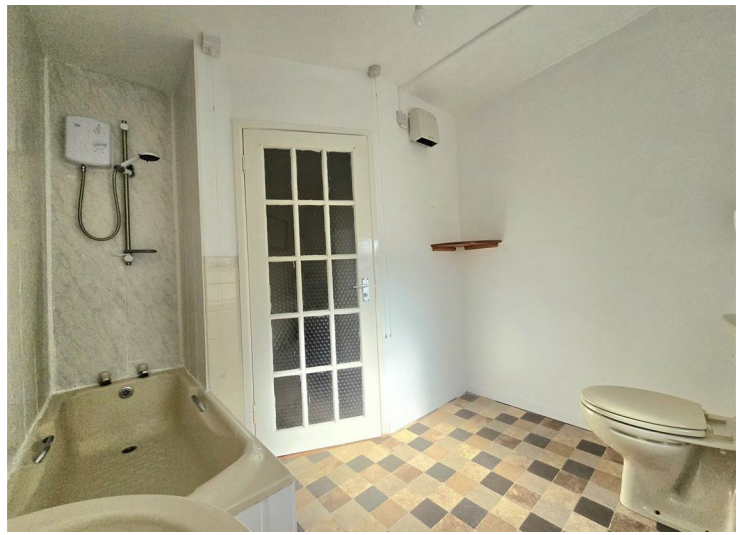
Second Floor

Landing

Bedroom 1 17'1" x 9'10" (5.22 x 3.01)

Bedroom 2 11'5" x 9'1" (3.49 x 2.77)

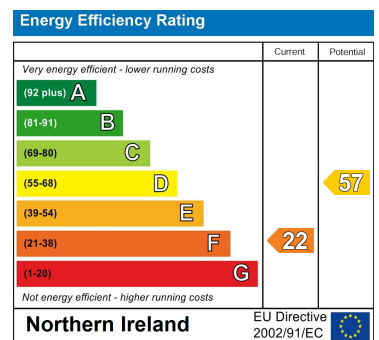




Area Map



Energy Efficiency Graph



Harry Clarke & Company is a trading entity of Harry Clarke & Company Limited. Registered in N.I. Company Number NI643802

Disclaimer- These particulars do not constitute any part of an offer or contract. None of the statements contained in these particulars are to be relied on as statements or representatives of fact and intending purchasers must satisfy themselves by inspection or otherwise to the correctness of each of the statements contained in these particulars. The vendor does not make or give, neither Harry Clarke & Company, nor any person in it's employment has any authority to make or give any representation or warranty whatever in relation to this property. All dimensions are approximate.

42 Mill Street, Ballymena BT43 5AE || 028 256 48829 || info@harryclarke.co.uk

