



122a Sandy Row, Belfast, BT12 5EX

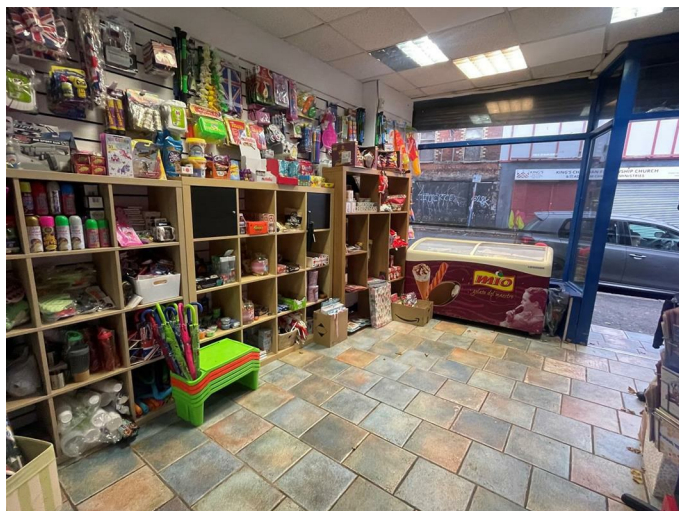
Price Guide £55,000

This commercial unit comprises, main shop floor, kitchen, office, store and separate modern shower suite. Located in the bustling sandy row, close to shops, hospitals, Lisburn Road and the City Centre, the unit benefits from high volume of passing vehicles and pedestrian footfall. Suitable for a variety of uses. Internal inspection comes recommended.

- Mid Terrace Commercial Unit For Sale
- Within Close Proximity To Belfast City Centre
- Ground Floor Shop
- Modern First Floor Shower Suite
- Immediate Access To Public Transport
- Prime Location On Sandy Row
- Investment Opportunity
- Offices On The First Floor
- Bustling Trading Area
- EPC D89

Energy Efficiency Rating		Current	Potential
Very energy efficient - lower running costs			
(92-100) A			
(81-91) B			
(69-80) C			
(55-68) D			
(39-54) E			
(21-38) F			
(1-20) G			
Not energy efficient - higher running costs			
Northern Ireland		EU Directive 2002/91/EC	

THE ACCOMMODATION COMPRISES
ON THE GROUND FLOOR
SHOP FLOOR 22'11" x 10'9" (7.0 x 3.3)



Tiled Floor.

KITCHEN 5'10" x 5'10" (1.8 x 1.8)
High and low level units, stainless steel sink unit and tiled floor. Access to rear.

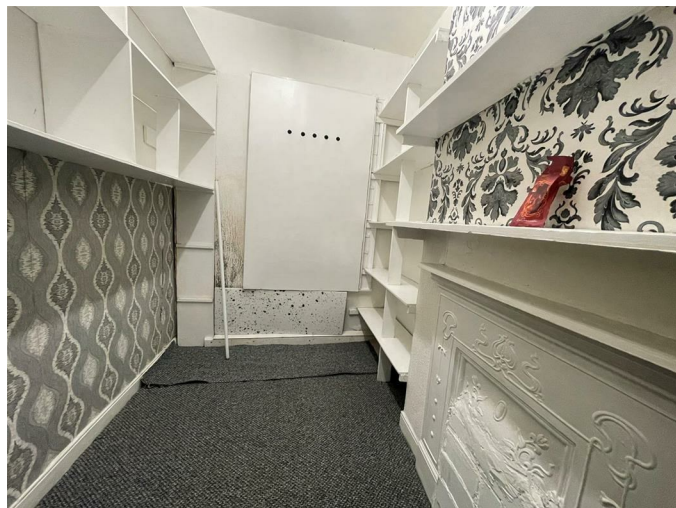
ON THE FIRST FLOOR

OFFICE ONE 11'5" x 10'5" (3.5 x 3.2)

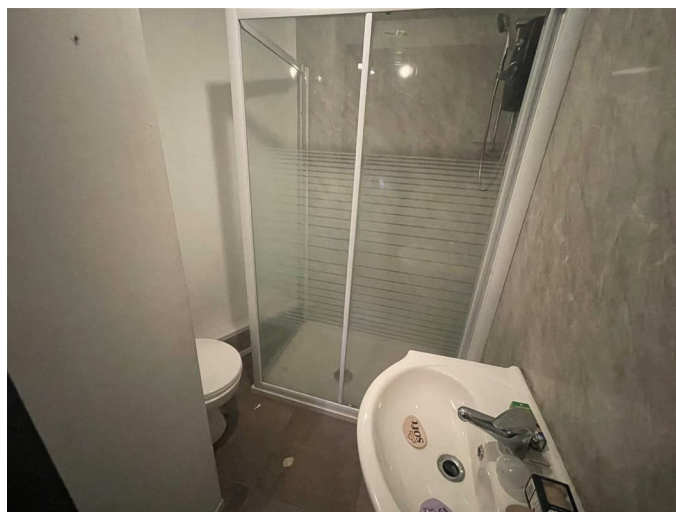


Laminate floor with feature fireplace.

OFFICE TWO 10'9" x 6'2" (3.3 x 1.9)



SHOWER

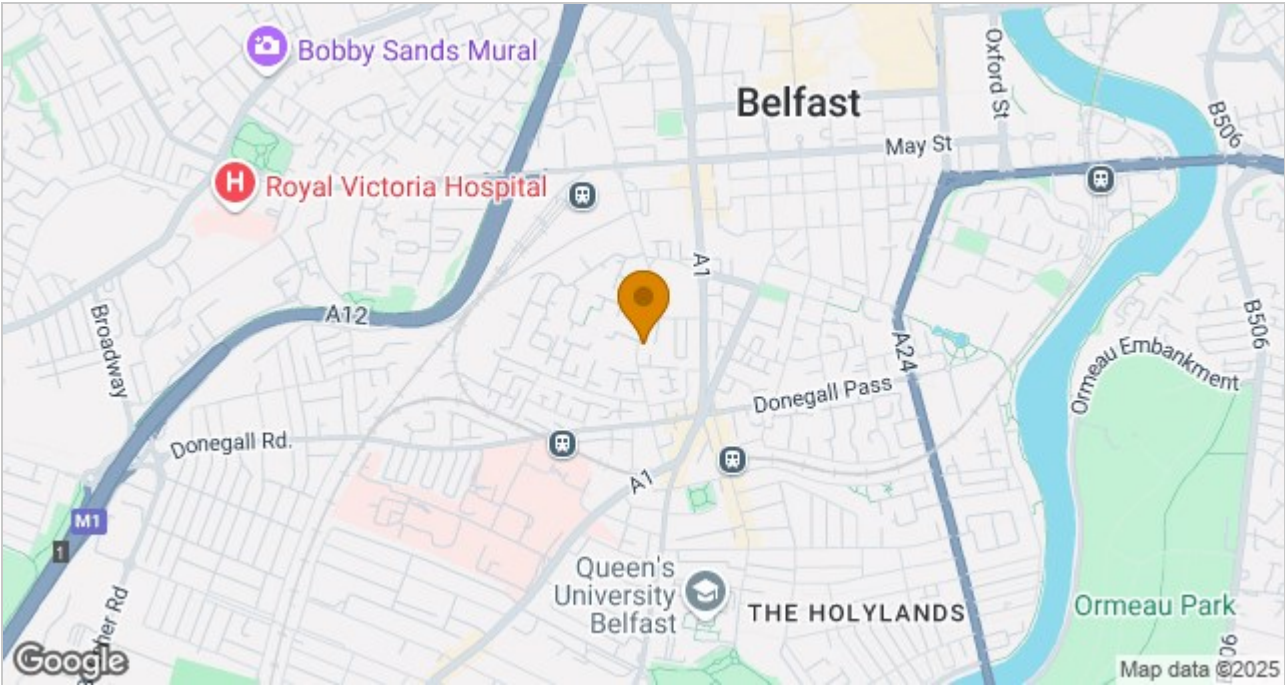


Modern suite comprising electric shower, low flush wc, sink with mixer tap, tiled floor and part pvc cladded walls.

Floor Plan



Area Map



These particulars, whilst believed to be accurate are set out as a general outline only for guidance and do not constitute any part of an offer or contract. Intending purchasers should not rely on them as statements of representation of fact, but must satisfy themselves by inspection or otherwise as to their accuracy. No person in this firms employment has the authority to make or give any representation or warranty in respect of the property.

ULSTERPROPERTYSALES.CO.UK

ANDERSONSTOWN
028 9060 5200
BALLYHACKAMORE
028 9047 1515
BALLYNAHINCH
028 9756 1155

BANGOR
028 9127 1185
CARRICKFERGUS
028 9336 5986
CAVEHILL
028 9072 9270

DONAGHADEE
028 9188 8000
DOWNPATRICK
028 4461 4101
FORESTSIDE
028 9064 1264

GLENGORMLEY
028 9083 3295
MALONE
028 9066 1929
NEWTOWNARDS
028 9181 1444

RENTAL DIVISION
028 9070 1000



John Thompson trading under licence as Ulster Property Sales (Downpatrick)
©Ulster Property Sales is a Registered Trademark