

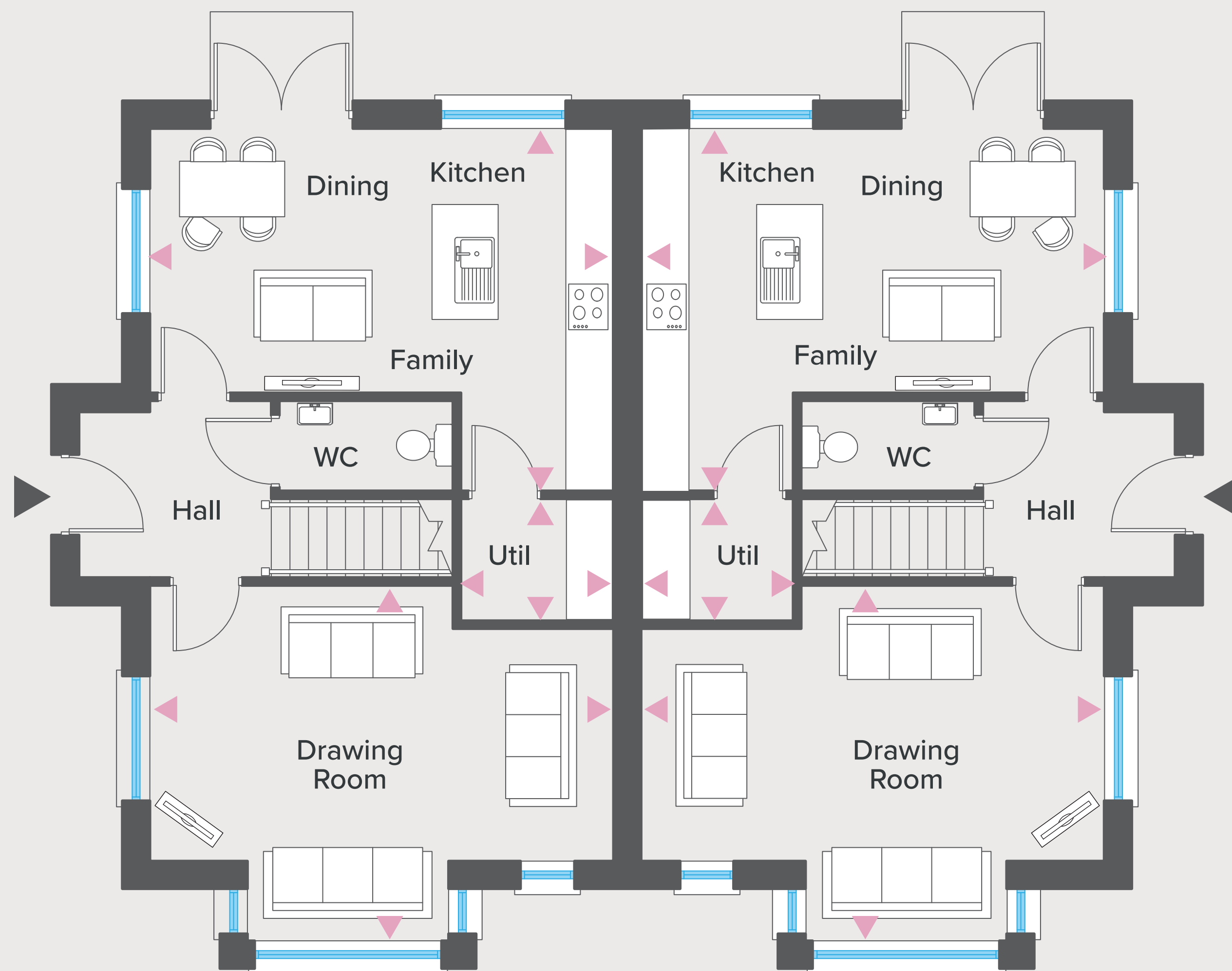


The Sawyer (SH1.2)

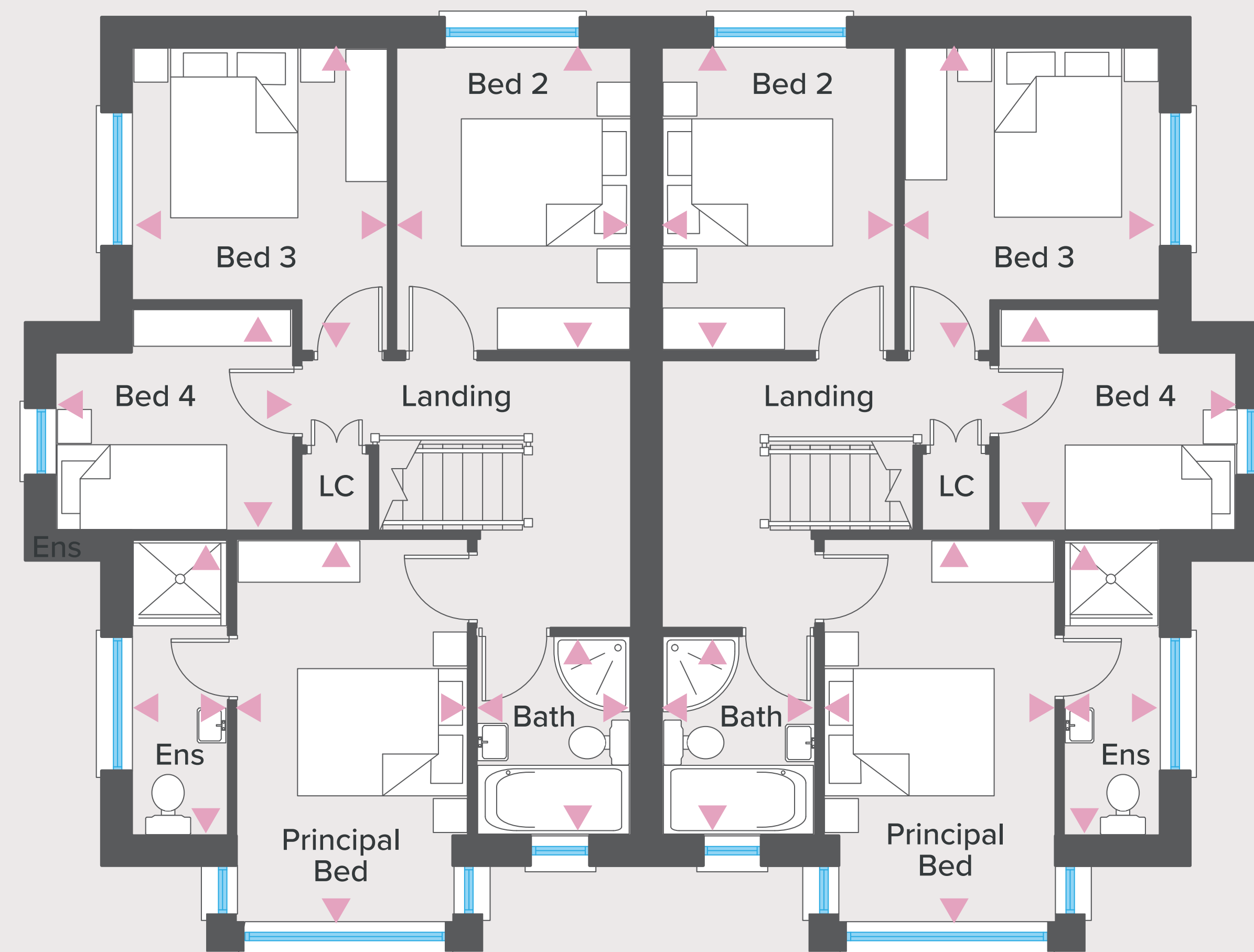
Site nos. 3, 4

4 Bedroom | Semi Detached | Total Area: 1274 sq ft

GROUND FLOOR



FIRST FLOOR



GROUND FLOOR

Ft/Inch

Metres

Entrance Hall with separate WC

Drawing Room _{max} 19'4" x 14'9" 5.88 x 4.51

Kitchen | Dining | Family _{max} 19'4" x 15'1" 5.88 x 4.60

Utility 6'4" x 5'3" 1.93 x 1.58

FIRST FLOOR

Ft/Inch

Metres

Principal Bedroom 14'9" x 9'0" 4.50 x 2.73

Ensuite 11'6" x 3'8" 3.50 x 1.13

Bedroom 2 11'9" x 9'1" 3.58 x 2.76

Bedroom 3 _{max} 11'9" x 9'10" 3.58 x 3.02

Bedroom 4 9'2" x 8'7" 2.80 x 2.61

Bathroom 7'8" x 6'0" 2.35 x 1.81

The Sawyer

(SH1.2) Site nos. 3, 4