

Tim Martin
.co.uk



15 The Courtyard
The Mill Village
Comber
BT23 5GR

Offers Around
£250,000

www.timmartin.co.uk
Telephone 028 91 878956

SUMMARY

A stunning duplex apartment, situated in the ever popular and much sought after Mill Village development, set on the outskirts of Comber's bustling village.

No. 15 The Courtyard is located on the first floor and is accessed by a beautiful glass fronted foyer with lift facility and boasts luxurious living with a twist of character and charm. The apartment comprises of an entrance hall, luxury fitted kitchen with matching island unit and an excellent range of integrated appliances, open plan to a living and dining area and from there you can enjoy access onto a small balcony. Two excellent sized bedrooms both enjoy ensuite facilities, whilst on the second floor a spacious lounge boasts an excellent entertaining space flooded with natural light opening onto a large decked balcony with fabulous views.

This superb apartment is further enhanced by gas fired central heating, double glazing, beam vacuum system, built in sound system, designated parking, and exclusive access to the leisure centre with swimming pool, sauna and fitness suite.

The Award Winning Mill Village development is perfectly located within close proximity of Comber town centre boasting a varied range of local amenities, shops, local primary and secondary schools and restaurants. Ease of access to the Comber by pass allows for a convenient commute to Belfast, Newtownards and Bangor whilst Dundonald, George Best Belfast City Airport, The Ulster Hospital, David Lloyd Fitness Centre and Stormont are only a short drive away. The Comber Greenway is also close at hand boasting a tranquil green corridor to Belfast for walkers and cyclists alike.

FEATURES

- Stunning Duplex Apartment Situated In The Exclusive Mill Village Development On The Outskirts Of Comber Village
- Beautifully Appointed Accommodation Spread Over The First And Second Floors
- Contemporary Fitted Kitchen With Island Unit And An Excellent Range Of Integrated Appliances Opening Onto A Small Balcony
- Two Excellent Sized Bedrooms Both With Ensuite Facilities
- Spacious Lounge With Access Onto A Large Decked Balcony Area
- Gas Fired Central Heating, Double Glazing, Beam Vacuum System And Built In Sound System
- Exclusive Access To Leisure Centre With Swimming Pool, Sauna And Fitness Suite
- Within Close Proximity To Comber Village With Its Excellent Range Of Local Amenities, Schools, Shops And Restaurants
- Convenient Commute To Newtownards, Belfast, Dundonald, George Best City Airport, Ulster Hospital And Stormont

Glass Fronted Foyer

With lift and stair access to first floor.

Entrance Hall

Oak wood strip floor; recessed spotlights; Beam vacuum point; telephone entry system.

Open Plan Kitchen / Living / Dining Area

18'4 x 17'10 (5.59m x 5.44m)

Extensive range of contemporary fitted high and low level cupboards and drawers with matching glazed cantilever cupboards and matching island unit incorporating 1½ tub stainless steel sink unit with mixer taps; integrated appliances to include Miele electric oven; Miele microwave; whirlpool 4 ring gas hob with stainless steel splashback; Miele extractor hood with curved glass over; Miele fridge / freezer; Miele dishwasher; Miele freezer; Hotpoint washing machine; granite worktops with matching breakfast bar; under cupboard lighting; part tiled floor; part oak wood strip floor; recessed spotlights; built in speakers; glazed uPVC doors to balcony; TV aerial connection point.

Bedroom 1

15'3 10'3 (4.65m x 3.12m)

Built in speakers; TV and telephone connection points; access to underfloor storage.

En-suite Bathroom

10'3 x 6'2 (3.12m x 1.88m)

Modern Villeroy and Boch white suite comprising tiled panel bath with chrome corner taps; wash hand basin with mono mixer taps and vanity unit under; walk in shower cubicle with Matki thermostatically controlled sink unit and wall mounted telephone shower attachment; drench shower head over; curved glass shower screen; towel radiator; part tiled walls; tiled floor; wall mounted WC with concealed cistern; recessed spotlights; built in speaker; electric shower point.

Bedroom 2

11'10 x 9'0 (3.61m x 2.74m)

Recessed spotlights; TV aerial connection point.

En-suite Shower Room

6'1 x 5'2 (1.85m x 1.57m)

Modern white suite comprising separate tiled shower cubicle with thermostatically controlled shower unit and wall mounted shower head over; fitted sliding shower doors; wall mounted WC with concealed cistern; wash hand basin with mono mixer taps and vanity unit under; tiled floor; recessed spotlights; electric shaver point.

Second Floor

Lounge

28'11 x 19'3 (8.81m x 5.87m)

(Max Measurements)

Oak wood strip floor; recessed spotlights; TV aerial connection point; Beam vacuum point; sliding door to spacious decked balcony area with fabulous views.

WC

6'3 x 3'1 (1.91m x 0.94m)

White suite comprising wall mounted WC with concealed cistern; wall mounted corner wash hand basin with mono mixer taps and tiled splashback; oak wood floor; recessed spotlight.

Boiler Room

With Ideal gas fired boiler.

Outside

Designated parking; access to leisure centre with swimming pool and fitness suite.

Management Company

McGuinness Fleck

Management Charge

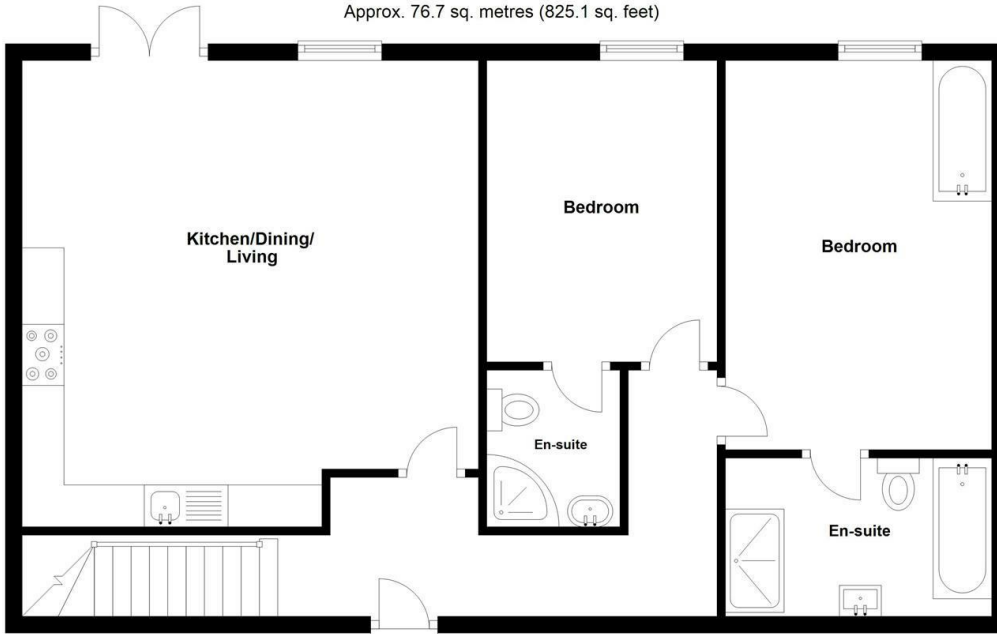
Approximately £2704.08 per annum (payable half yearly)

Capital / Rateable Value

£165,000 = Rates Payable £1507.61 per annum (approximately)

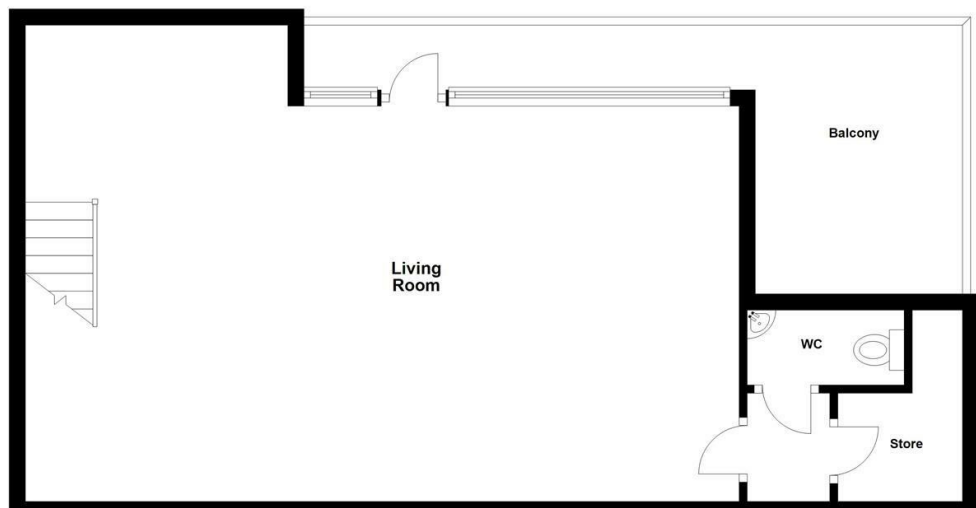
First Floor

Approx. 76.7 sq. metres (825.1 sq. feet)



Second Floor

Approx. 57.3 sq. metres (616.9 sq. feet)











Energy Efficiency Rating		Current	Potential
Very energy efficient - lower running costs			
(92 plus) A			
(81-91) B			
(69-80) C		70	76
(55-68) D			
(39-54) E			
(21-38) F			
(1-20) G			
Not energy efficient - higher running costs			

Comber
 27 Castle Street, Comber, BT23 5DY
 T 028 91 8789596

Saintfield
 1B Main Street, Saintfield, BT24 7AA
 T 028 97 568300

Tim Martin & Company for themselves and for the vendors of this property have endeavoured to prepare these sales details as accurate and reliable as possible for the guidance of intending purchasers or lessees. These particulars are given for general guidance only and do not constitute any part of an offer or contract. The seller and us as agents, do not make any representation or give any warranty in relation to the property. We would recommend that all information contained in this brochure about the property be verified by yourself or professional advisors. Services, fittings and equipment referred to in the sales details have not been tested (unless otherwise stated) and no warranty will be given as to their condition. All measurements contained within this brochure are approximate. Please contact us prior to viewing the property. If there is any point of particular importance to you we would be pleased to provide additional information or make further enquiries. We will also confirm that the property remains available. This is particularly important if you are contemplating travelling some distance to view the property.