

# For Sale

Asking Price: £750,000

SimonBrien



81 Station Road,  
Portstewart,  
County Londonderry,  
BT55 7PU

## KEY FEATURES

- Magnificent Detached Family Bungalow
- Unrivalled Level of Finish/Presentation/Specification
- Five Double Bedrooms
- Luxury Kitchen with Central Island, Range of High Quality Appliances open to Spacious Living/Dining Area
- Contemporary Wet Room plus 2 Ensuites [ One Jack and Jill ]
- Principal Bedroom with Dressing Room
- Italian Porcelain Tiling Throughout
- Stunning Patio Garden to Rear with Porcelain Tiling, Barbecue Hut, Hot Tub and Outdoor Kitchen Area
- Attached Garage
- Generous Parking to front accessed via electric gates
- Underfloor Gas Fired Central Heating with Individual Thermostats in each room
- CCTV Cameras [ App Controlled ]
- Smart Alarm System
- Popular and Convenient Location on Periphery of Portstewart
- Close to a Host of Outdoor Attractions including stunning beaches and world renowned Golf Course
- Belfast Approximately 1 hr away
- Viewing By Private Appointment



## SUMMARY

This a unique and rare opportunity to acquire what can only be described as a magnificent detached family bungalow finished to an unrivalled specification throughout recently renovated and refurbished in 2021/2022 with a superb attention to detail throughout

The bright and spacious accommodation provides an exceptional layout with five bedrooms, two luxury ensuite plus additional wet room together with a stunning kitchen open to living/dining which is undoubtedly the focal point of the property

Externally the property is positioned on a generous site with access via electric gates and has a rear patio garden that has to be viewed to be appreciated with outdoor porcelain tiles, barbecue hut, hot tub and outdoor kitchen

Beautifully located on the periphery of Portstewart this luxury home is on the doorstep of many of North Coasts attractions including 2 world renowned golf courses, beautiful beaches and a host of local amenities, excellent bars, cafes and restaurants. Belfast City Centre is just over an hour away

Whether as a permanent residence or a second home/holiday retreat viewing is by private appointment through our Belfast Office on 02890 668888



## ACCOMMODATION

### ENTRANCE HALL:

Composit front door. Italian porcelain tiles. Recessed lighting. Oak panelling. Illuminated mirror. Double storage cupboard with railing and shelving. Ladder access to floor roof space with light and power.



### GROUND FLOOR

#### OPEN PLAN KITCHEN/LIVING/DINING:

22' 8" x 21' 1" (6.91m x 6.43m)

Kitchen: Central island unit with Schock sink set in granite worktop. Quooker tap with instant boiling water. Airforce induction hob. Wine chiller. Oak vaneer wall units, drawers. Integrated appliance including fridge freezer, oven, warming drawer, microwave and dishwasher.





**UTILITY ROOM:  
9' 8" x 8' 10" (2.95m x 2.69m)**

Inset sink. Range of high and low level units. Granite worktops. Plumbed for washing machine. Space for tumble dryer. Broom cupboard. Pet shower area. Italian porcelain tiling. Recessed lighting.



**REAR HALLWAY:**

Sliding patio doors to garden.



**BEDROOM (1):**  
**20' 2" x 12' 0" (6.15m x 3.66m)**

Oak vaneer panelling with wall mounted mirror. Recessed lighting. Sliding door to garden.



**ENSUITE:**

Fully tiled walk in shower enclosure. Floating WC with under lighting. Wash hand basin in vanity unit. Storage below. LED mirror.



**DRESSING ROOM:**  
**7' 6" x 6' 4" (2.29m x 1.93m)**

Recessed lighting. Porcelain tiled floor.



**BEDROOM (2):**  
9' 9" x 9' 8" (2.97m x 2.95m)

Recessed lighting. Porcelain tiled floor.



**BEDROOM (3):**  
9' 8" x 9' 5" (2.95m x 2.87m)

Oak vaneer panelling. Porcelain tiled floor.



**BEDROOM (4):**  
11' 8" x 8' 5" (3.56m x 2.57m)

Oak vaneer panelling. Wall light wiring. Recessed lighting. Porcelain tiled floor.



**JACK AND JILL EN-SUITE:**

Fully tiled walk in shower enclosure. Thermostatic shower. Floating WC. Wash hand basin in vanity unit. Storage below. LED mirror. Recessed lighting. Porcelain tiled floor.



**BEDROOM (5):**  
**9' 9" x 8' 4" (2.97m x 2.54m)**

Recessed lighting. Porcelain tiled floor.



**OUTSIDE**

**ATTACHED GARAGE**

Light and power. Electric up and over door. Roller door to rear. Ladder to floored roof space. Tarmac driveway with extensive parking accessed via electric gates. Fully enclosed gardens to rear. Tiled patio with outdoor porcelain tiles. Granite wall copings. Sills and kerbs. Hexagonal barbeque house with light and power. Outside lighting. Hot tun and outdoor kitchen area.



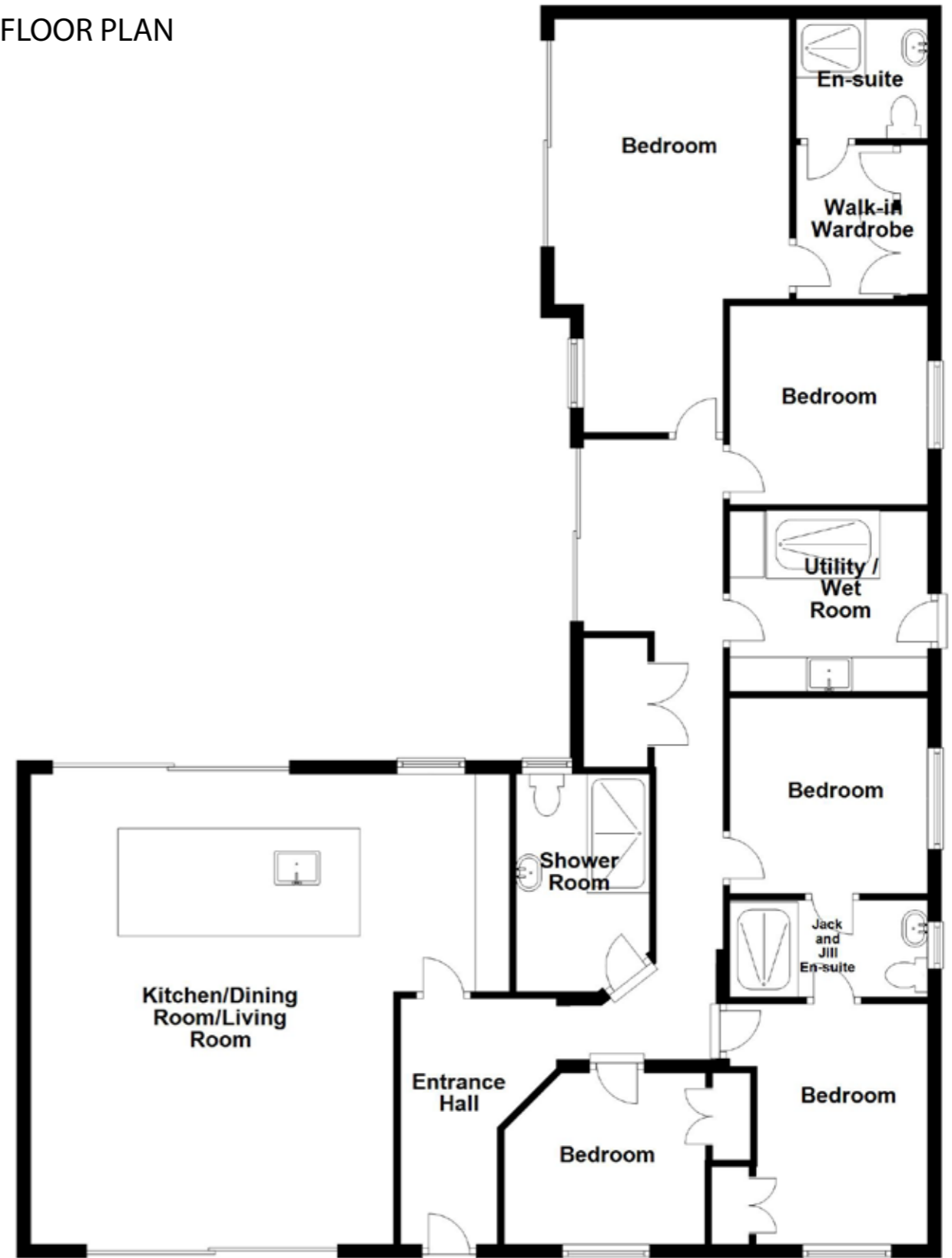
**WET ROOM:**

Fully tiled walk in shower enclosure. Rainfall shower and additional telephone hand shower. Floating WC with sensor under lighting. Wash hand basin set on marble top vanity unit. Storage below. LED mirror. Porcelain tiled floor. Recessed lighting. Extractor fan.





FLOOR PLAN



This plan is for illustrative purposes only.  
Plan produced using PlanUp.



---

## VALUER

**Mark Leinster**

**Valuer**

**Simon Brien**

**525 Lisburn Road, Belfast, County**

**Antrim, BT9 7GQ**

**T: +44 28 9066 8888**

**E: southbelfast@simonbrien.com**

## MORTGAGE ADVICE

For free independent advice on mortgages talk to

**Crawford Mulholland**

**348 Lisburn Road, Belfast,**

**Co. Antrim, BT9 6GH**

**T: 028 9066 5544**

**E: office@crawfordmulholland.com**



**simonbrien.com**

---

Simon Brien Residential for themselves and for the Vendors or Lessors of the property whose agents they are give notice that; i) these particulars are given without responsibility of Simon Brien Residential or the Vendors or Lessors as a general outline only, for the guidance of prospective purchasers or tenants, and do not constitute the whole or any part of an offer or contract, ii) Simon Brien Residential cannot guarantee the accuracy of any description, dimensions, references to condition, necessary permissions for use and occupation and other details contained herein and any prospective purchasers or tenants should not rely on them as statements or representations of fact but must satisfy themselves by inspection or otherwise as to the accuracy of each of them; iii) no employee of Simon Brien Residential has any authority to make or give any representation or warranty or enter into any contract whatsoever in relation to the property, iv) VAT may be payable on the purchase price and/or rent, all figures are quoted exclusive of VAT, intending purchasers or lessees must satisfy themselves as to the applicable VAT position, if necessary by taking appropriate professional advice; v) Simon Brien Residential will not be liable, in negligence or otherwise, for any loss arising from the use of these particulars.